

INT52 AFFINITY

Wallcoverings » Decorative Wallcoverings



Brand: **Omexco**

Collections: **Intuition**

Applications: **Walls**

1300 306 399

info@baresque.com.au

baresque.com.au

1 of 5

INT52 AFFINITY

Wallcoverings » Decorative Wallcoverings



INT52 AFFINITY

Wallcoverings » Decorative Wallcoverings

This design is a patchwork that looks like a giant weave. The patchwork is made of cattail grass and doesn't show any knots.

✓ **Ecological**

✓ **Light Resistant**

✓ **Seamless Joins**

Description

Omexco's latest collection uses a diverse range of natural materials. In this collection, we aim to emphasize the inherent richness of natural fibres in their purest form.

The interplay of weaves, the rhythm of the stripes, and the meticulously crafted geometric patterns have been carefully curated by our design studio. Their aim is to illuminate the myriad treasures these materials have to offer.

The natural materials of intuition provide a tactile delight, awakening the senses and introducing a fresh dimension to your living spaces. intuition embodies the selection of an aesthetic and sensorially captivating design.

Composition

Cattail patchwork

Environmental Info

The materials contained in these wallcoverings are naturally occurring and renewable resources harvested from farms and coloured with water-based inks.

Pattern Repeat Size

30cm V

Roll Size

91cm wide - Available by the lineal metre

Weight

458 g/m²

Fire Rating

Tested in accordance with AS ISO 9705 2003 for the purpose of determining the Group Number classification as required by the Building Code of Australia for the control of fire spread on interior wall and ceiling linings.

The result achieved was:
Classification - Group 2
Specific Extinction - Less than 250m²/kg

Lead Time

- 2-weeks (approx.) from Wednesday, subject to stock availability.
- Additional 1-week for Western Australia.
- Express delivery is available subject to a surcharge. Contact Baresque for details and pricing.

INT52 AFFINITY

Wallcoverings » Decorative Wallcoverings

Suggested Installation

Non-reverse hang / butt join.

If your order contains several numbered rolls of one single item/ reference, please first install the roll with the highest number, and then continue to install the other rolls in sequence, in descending order.

Measure and cut 3 strip lengths. Add 5 to 10 cm to top and bottom of each strip.

For printed patterns, plan your match from the roll before cutting

Mark each strip coming from the roll on the back and hang in the same sequence

Reverse alternate lengths when instructed to do so by label on the roll

Care Instructions

Always use a clean, white, soft cloth.

Remove liquid stains immediately using a dry cloth. Avoid hard scrubbing.

For tougher stains, dampen the cloth with warm water or a weak dilution of liquid detergent and apply being careful not to soak the material. Always work towards the centre of the stain so as to avoid further spreading.

Remove any detergent with a clean, damp cloth. Gently pat dry.

Always test in an inconspicuous area first.

Warranty

2-year warranty. Visit baresque.com.au/warranty for complete details.

Additional Comments

All products of this collection are natural products. Differences of colour and aspect between batches and even between strips are unavoidable. We cannot guarantee a perfect colour match between the sample in the pattern book and the delivered goods.

INT52 AFFINITY

Wallcoverings » Decorative Wallcoverings

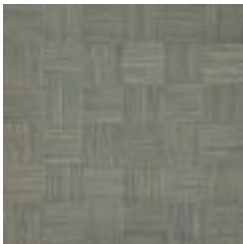
Colour & Finish Options

COLOURWAY
CARD

INTUITION
COLOURWAY CARD



INT521



INT522



INT523