

EMBOSS PANEL CELIUM

Acoustics » Acoustic Panels



Brand: **Zintra**

Collections: **Emboss Panel**

Applications: **Walls**

1300 306 399

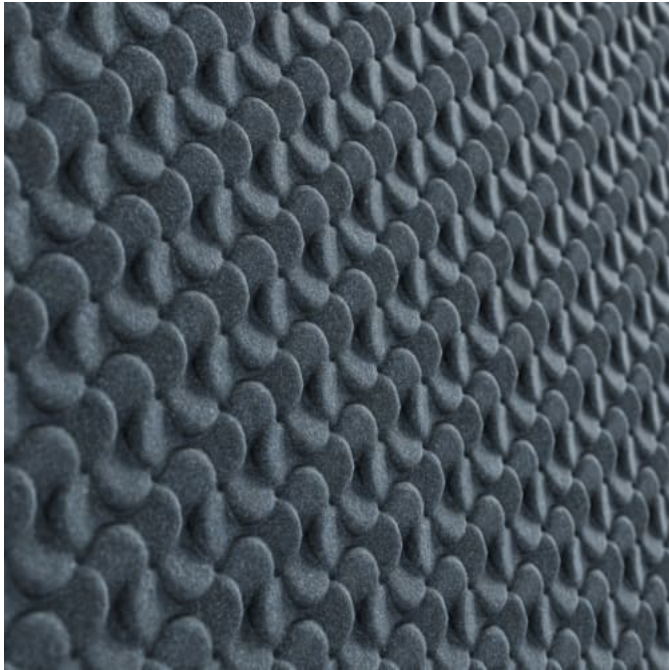
info@baresque.com.au

baresque.com.au

1 of 8

EMBOSS PANEL CELIUM

Acoustics » Acoustic Panels



Emboss Panel Celium Detail Twilight



Emboss Panel Celium Detail



Emboss Panel Celium Ecru Warm Lighting

EMBOSS PANEL CELIUM

Acoustics » Acoustic Panels

Challenge design conventions with Zintra Emboss Panel Celium. Inspired by microscopic forms, its organic texture adds depth, movement, and a sense of tranquility.

- ✓ Acoustic
- ✓ Bleach Cleanable
- ✓ Easy Clean
- ✓ Easy Install

Description	<p>Zintra Emboss Panels brings a touch of luxury to acoustic solutions, combining timeless craftsmanship with advanced technology. These tactile three-dimensional panels create an immersive experience that transforms the ambiance of any space. The warm heather of Zintra softens the environment, ensuring that even the most austere spaces feel inviting.</p> <p>Designed for seamless installation, Zintra Emboss Panels can be installed both vertically or horizontally, offering versatile design possibilities. They provide more than just noise absorption—they tell a story with every surface. Their intricate patterns and dynamic visual effects shift with perspective, adding depth and warmth to any room, making conversations flow effortlessly without echoes or disturbances.</p> <p>Celium</p> <p>Celium pushes the boundaries of design, drawing inspiration from the intricate world of microscopic mushrooms. This design invites exploration and curiosity, with its organic texture and intricate pattern adding a sense of depth and movement.</p> <p>Unlike other designs in the collection, Celium challenges convention, offering a fresh, avant-garde aesthetic that evokes the delicate and mysterious forms found in nature. This distinctive texture transforms any space into a captivating focal point, creating an atmosphere of tranquility and sophistication.</p> <p>Available in 18 great designs.</p> <p>Ascend Celium Constellation Corduroy Corduroy Fine Cumulus Damask Jungle Linked Molecular Rivulet Sandglass Scallop Stitched Tapestry Tidal Tufted Woven</p> <p>In hospitality, commercial, and care environments, Zintra Emboss Panels don't just absorb sound – they elevate spaces with their luxurious textures and calming designs, creating atmospheres that are as visually captivating as they are acoustically sound.</p> <p>Please note: Zintra Emboss is suitable for single-sided applications only.</p> <p>Don't just design spaces. Craft experiences.</p>
-------------	--

Composition	<p>Zintra Acoustic Panel - 100% Solution Dyed (Colour Through) Polyester</p> <p>12mm (1/2") - Density 2.4 kg /m² 0.5 lb/ft²</p>
-------------	---

EMBOSS PANEL CELIUM

Acoustics » Acoustic Panels

Sustainability	<p>Zintra is made from 100% recyclable materials.</p> <ul style="list-style-type: none">• 60% post-consumer recycled content from PET bottles.• 35% pre-consumer recycled content from PET chips• 5% polylactic acid (PLA)
Dimensions	<p>Available in 12mm (1/2") 2743mm (108") x 1118mm (44")</p> <p>"Emboss Panel patterns will align with a commercial tolerance of +/- 1mm. Panel thickness may vary by 15%. Pack as required to align face."</p>
Fire Rating	<p>ASTM-E84 – Class A classification AS ISO 9705 – 2003 – Group 1 classification EN-13501 – B-s2-d0 classification</p>
Supplied As	<p>1 x Emboss Panel in selected pattern</p>
Fabrication Techniques	<p>Utility knife and CNC with oscillating knife.</p>
Assembly & Delivery	<p>Ships Flat Pack</p> <p>Go to the Technical Documents and download the Installation Guide for more details.</p>
Suggested Installation	<p>Go to Technical Documents and download the Installation Guide for more details.</p>
Care Instructions	<p>Vacuum to remove dust.</p> <p>Dab Zintra with a damp clean cloth and mild solution of liquid detergent and warm water. Repeat using only clean water, then pat dry with a lint free cloth.</p> <p>For difficult stains, use a solution of household bleach (10% bleach / 90% water). To remove the bleach, repeat using a clean, water dampened cloth, then pat dry.</p> <p>Always test in an inconspicuous area first and if you don't see the expected results, contact us.</p>
Warranty	<p>Visit FAQ for more details.</p>

EMBOSS PANEL CELIUM

Acoustics » Acoustic Panels

Additional Comments NRC 0.35

How to Specify

1. Select Emboss design
2. Select Zintra Colour

EMBOSS PANEL CELIUM

Acoustics » Acoustic Panels

Colour & Finish Options

Zintra 12mm Solid PET



Bark



Brick



Cadet



Chambray



Cobalt



Ecru



Elderberry



Fossil



Frost



Grass



Greige



Ivory



Linen



Malachite



Mandarin



Meadow



Midnight



Ochre



Olive



Parchment



Pebble



Pewter



Saffron



Sky



Smoke

EMBOSS PANEL CELIUM

Acoustics » Acoustic Panels



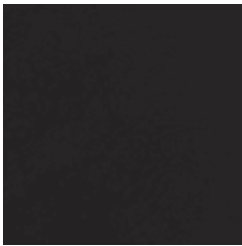
Slate



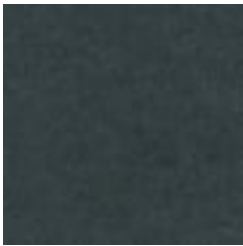
Storm



Sunshine



Tar

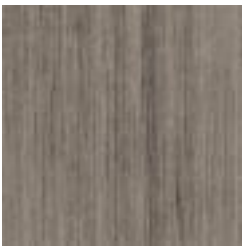


Twilight

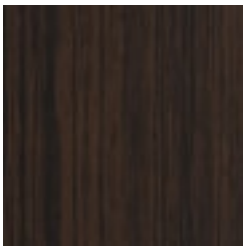
Zintra Timber Print



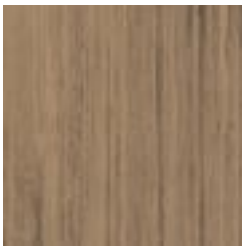
Eucalyptus



Ironbark

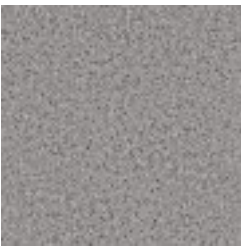


Merbau

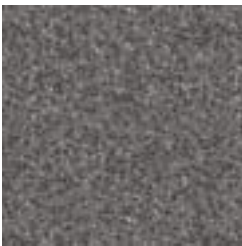


Spotted Gum

Zintra Premium Material



Terrazzo Light



Terrazzo Medium



Terrazzo Dark



Travertine Light



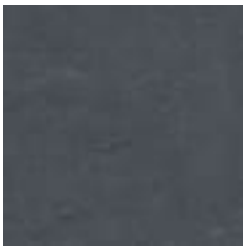
Travertine Medium



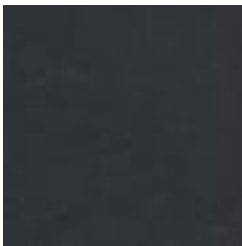
Travertine Dark



Shale Light



Shale Medium



Shale Dark



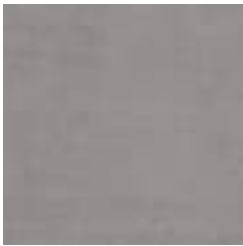
Raku Bone



Raku Luster



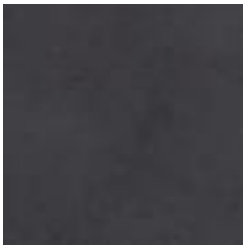
Raku Jade



Concrete Cast



Concrete Polished



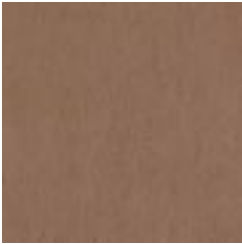
Concrete Dark Tint

EMBOSS PANEL CELIUM

Acoustics » Acoustic Panels



Terracotta Sun
Bleached



Terracotta Mission



Terracotta Antique

Zintra Premium Wood



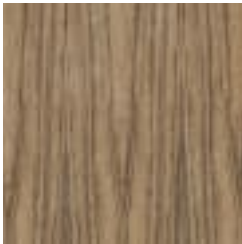
Knotty Pine



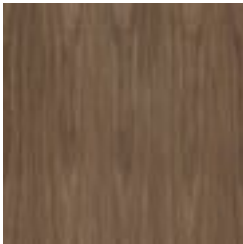
Maple



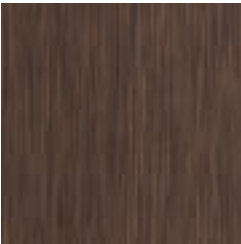
Poplar



Australian Walnut



Claro Walnut



Palm Wood



Rustic Walnut



Cherry



Euro Beech



Lacewood



Redwood



White Oak