

# BAFFLE SYSTEMS WAVE

Acoustics » Acoustic Baffles



Brand: **Zintra**

Collections: **Baffle Systems**

Applications: **Ceilings**

1300 306 399

[info@baresque.com.au](mailto:info@baresque.com.au)

[baresque.com.au](http://baresque.com.au)

1 of 9

# BAFFLE SYSTEMS WAVE

**Acoustics** » Acoustic Baffles

---



Baffle System Wave Detail

# BAFFLE SYSTEMS WAVE

Acoustics » Acoustic Baffles

Transform your space with Zintra Baffle System, Wave design. Our high-performing baffles offer flexible and dynamic acoustic control, perfect for enhancing spacious environments

- ✓ Acoustic
- ✓ Bleach Cleanable
- ✓ Easy Clean
- ✓ Easy Install

Description	<p>A modern solution for acoustic control, Zintra Baffles are a prefabricated, ceiling mounted system. Showcasing Zintra’s flexible characteristics and offering superior acoustic control, Zintra Acoustic Baffles are an innovative replacement to traditional mineral fibre lay systems.</p> <p>By exposing the ceiling, Zintra baffles create an open and airy atmosphere while efficiently mitigating noise levels.</p> <p><b>Wave</b></p> <p>Inspired by the dynamic flow of waves, creating visually intriguing acoustic designs.</p> <p>Easy to assemble, easy to install and available in a large array of designs, baffles are ideally suited to large noisy spaces in educational institutions, shopping centres, restaurants, and airports.</p> <p><b>Available in 11 designs</b></p> <p>Bolt   Canyon   Gorge   Individual   Louvre   Quarter  Ridge   Square   Swell   V-Fold   Wave</p> <p>Combining a dynamic aesthetic appeal and acoustic performance these systems are supplied ready to install with minimum fuss. A great advantage of the vertical blades is the increased surface area that is presented to the room resulting in a greater absorption of sound compared to flat panels.</p> <p>Zintra Baffles present a modern and budget-friendly solution for cultivating a tranquil and efficient workspace.</p> <p>Choose from one of our 12 vibrant powdercoat colors (additional charge)</p>
-------------	--

Composition	<p>Zintra Acoustic Panel - 100% Solution Dyed (Colour Through) Polyester</p> <p>12mm (1/2") - Density 2.4 kg /m² 0.5 lb/ft²</p>
-------------	---

Sustainability	<p>Zintra is made from 100% recyclable materials.</p> <ul style="list-style-type: none"><li>• 60% post-consumer recycled content from PET bottles.</li><li>• 35% pre-consumer recycled content from PET chips</li><li>• 5% polylactic acid (PLA)</li></ul>
----------------	--

# BAFFLE SYSTEMS WAVE

Acoustics » Acoustic Baffles

## Dimensions

Available in 2 sizes, Small Baffle and Large Baffle.

Small: 1220mm (48") w x 1373mm (54") d x 120mm (4.7") h

Large: 1220mm (48") w x 2745mm (108.1") d x 120mm (4.7") h

## Fire Rating

ASTM-E84 – Class A classification  
AS ISO 9705 – 2003 – Group 1 classification  
EN-13501 – B-s2-d0 classification

## Supplied As

### Waves: 10 Blades

- Depending on size:
- 4 or 6 Adjustable Suspension Kit (ASK) | 2 or 3 x Aluminium Tube with Notches | 4 or 6 x Aluminium End Caps | 2 or 3 x 24mm (1") Zintra Connectors

## Assembly & Delivery

Ships Flat Packed.

Assemble your Baffle System then suspend from the ceiling using hanging hardware supplied.

Go to the Technical Documents and download the Installation Guide for more details.

## Suggested Installation

Go to Technical Documents and download the Installation Guide for more details.

## Care Instructions

Vacuum to remove dust.

Dab Zintra with a damp clean cloth and mild solution of liquid detergent and warm water. Repeat using only clean water, then pat dry with a lint free cloth.

For difficult stains, use a solution of household bleach (10% bleach / 90% water). To remove the bleach, repeat using a clean, water dampened cloth, then pat dry.

Always test in an inconspicuous area first and if you don't see the expected results, contact us.

## Warranty

Visit FAQ for more details.

## Customisable

Zintra Acoustic Panel - 100% Solution Dyed (Colour Through) Polyester  
12mm (1/2") - Density 2.4 kg /m² 0.5 lb/ft²

# BAFFLE SYSTEMS WAVE

Acoustics » Acoustic Baffles

---

- Additional Comments
- NRC Rating
- Without Air Gap: Up to 0.95
  - With 24" (610mm) Air Gap: Up to 1.00
- 

- How to Specify
1. Select Design
  2. Select Size
  3. Select Zintra Colour
-

# BAFFLE SYSTEMS WAVE

Acoustics » Acoustic Baffles

## Colour & Finish Options

Zintra 12mm Solid PET



Bark



Brick



Cadet



Chambray



Cobalt



Ecru



Elderberry



Fossil



Frost



Grass



Greige



Ivory



Linen



Malachite



Mandarin



Meadow



Midnight



Ochre



Olive



Parchment



Pebble



Pewter



Saffron



Sky



Smoke

# BAFFLE SYSTEMS WAVE

Acoustics » Acoustic Baffles



Slate



Storm



Sunshine



Tar



Twilight

## Zintra Timber Print



Eucalyptus



Ironbark

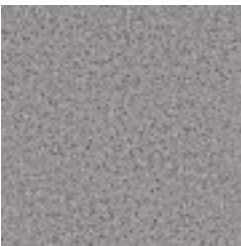


Merbau

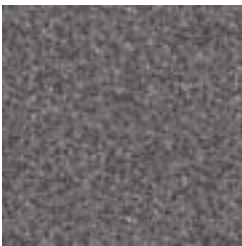


Spotted Gum

## Zintra Premium Material



Terrazzo Light



Terrazzo Medium



Terrazzo Dark



Travertine Light



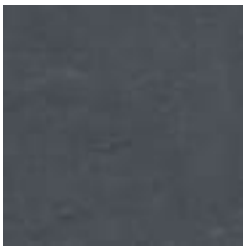
Travertine Medium



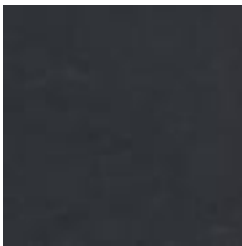
Travertine Dark



Shale Light



Shale Medium



Shale Dark



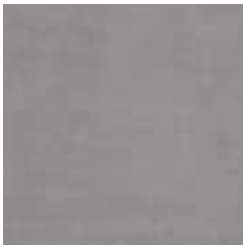
Raku Bone



Raku Luster



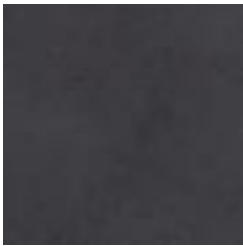
Raku Jade



Concrete Cast



Concrete Polished



Concrete Dark Tint

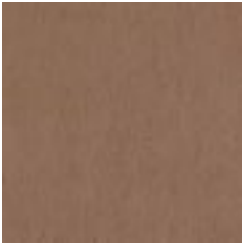


# BAFFLE SYSTEMS WAVE

Acoustics » Acoustic Baffles



Terracotta Sun  
Bleached



Terracotta Mission

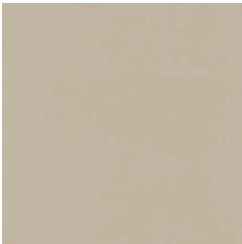


Terracotta Antique

## Zintra Premium Wood



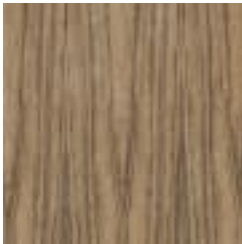
Knotty Pine



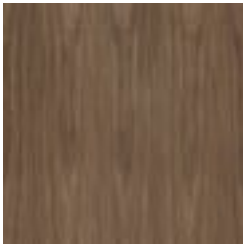
Maple



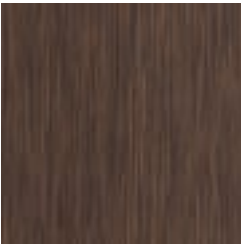
Poplar



Australian Walnut



Claro Walnut



Palm Wood



Rustic Walnut



Cherry



Euro Beech



Lacewood



Redwood

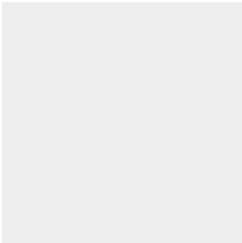


White Oak

## Powdercoat



Anodised Silver



Bengal White



Denim



Fern

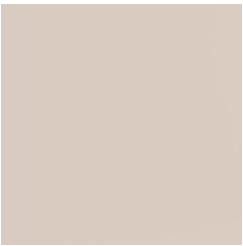


Gunmetal



# BAFFLE SYSTEMS WAVE

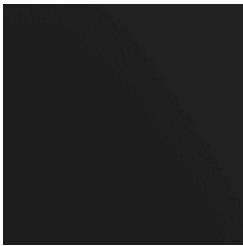
Acoustics » Acoustic Baffles



Light Grey



Marigold



Matte Black



Spice



Tango



Teal



Terracotta