

BAFFLE SYSTEMS SWELL

Acoustics » Acoustic Baffles



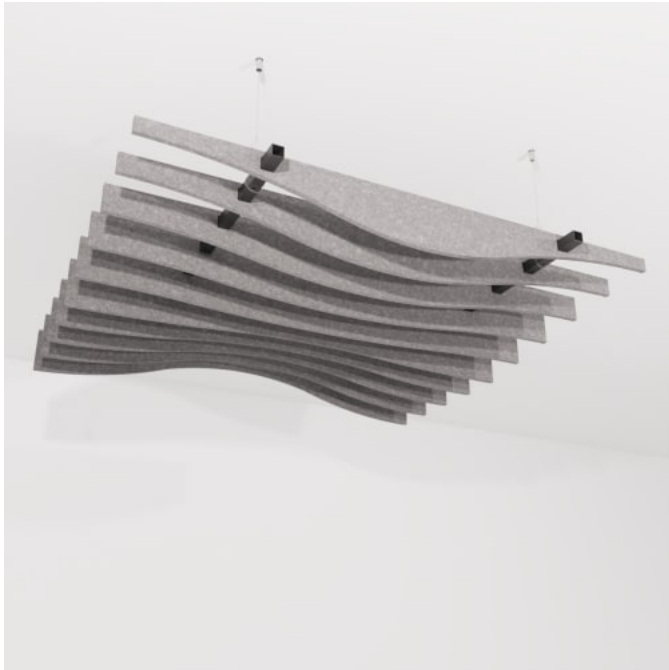
Brand: **Zintra**

Collections: **Baffle Systems**

Applications: **Ceilings**

BAFFLE SYSTEMS SWELL

Acoustics » Acoustic Baffles



Baffle Systems Swell Detail

BAFFLE SYSTEMS SWELL

Acoustics » Acoustic Baffles

Transform your space with Zintra Baffle System, Swell design. Our high-performing baffles offer flexible and dynamic acoustic control, perfect for enhancing spacious environments

- ✓ Acoustic
- ✓ Bleach Cleanable
- ✓ Easy Clean
- ✓ Easy Install

Description	<p>A modern solution for acoustic control, Zintra Baffles are a prefabricated, ceiling mounted system. Showcasing Zintra’s flexible characteristics and offering superior acoustic control, Zintra Acoustic Baffles are an innovative replacement to traditional mineral fibre lay systems.</p> <p>By exposing the ceiling, Zintra baffles create an open and airy atmosphere while efficiently mitigating noise levels.</p> <p>Swell</p> <p>Captures the essence of a wave's fluid motion, evoking a sense of movement and energy.</p> <p>Easy to assemble, easy to install and available in a large array of designs, baffles are ideally suited to large noisy spaces in educational institutions, shopping centres, restaurants, and airports.</p> <p>Available in 11 designs</p> <p>Bolt Canyon Gorge Individual Louvre Quarter Ridge Square Swell V-Fold Wave</p> <p>Combining a dynamic aesthetic appeal and acoustic performance these systems are supplied ready to install with minimum fuss. A great advantage of the vertical blades is the increased surface area that is presented to the room resulting in a greater absorption of sound compared to flat panels.</p> <p>Zintra Baffles present a modern and budget-friendly solution for cultivating a tranquil and efficient workspace.</p> <p>Choose from one of our 12 vibrant powdercoat colors (additional charge)</p>
-------------	---

Composition	<p>Zintra Acoustic Panel - 100% Solution Dyed (Colour Through) Polyester</p> <p>12mm (1/2") - Density 2.4 kg /m² 0.5 lb/ft²</p>
-------------	---

Sustainability	<p>Zintra is made from 100% recyclable materials.</p> <ul style="list-style-type: none">• 60% post-consumer recycled content from PET bottles.• 35% pre-consumer recycled content from PET chips• 5% polylactic acid (PLA)
----------------	--

BAFFLE SYSTEMS SWELL

Acoustics » Acoustic Baffles

Dimensions	<p>Available in 2 sizes, Small Baffle and Large Baffle.</p> <ul style="list-style-type: none">• Small: 1220mm (48") w x 1220mm (48") d• Large: 1220mm (48") w x 2745mm (108") d <p>Available in 120mm (4.7") or 240mm (9.5") high</p>
Fire Rating	<p>ASTM-E84 – Class A classification AS ISO 9705 – 2003 – Group 1 classification EN-13501 – B-s2-d0 classification</p>
Supplied As	<p>Swell: 10 Blades</p> <ul style="list-style-type: none">• Depending on size:• 4 or 6 Adjustable Suspension Kit (ASK) 2 or 3 x Aluminium Tube with Notches 4 or 6 x Aluminium End Caps 2 or 3 x 24mm (1") Zintra Connectors
Assembly & Delivery	<p>Ships Flat Packed.</p> <p>Assemble your Baffle System then suspend from the ceiling using hanging hardware supplied.</p> <p>Go to the Technical Documents and download the Installation Guide for more details.</p>
Suggested Installation	<p>Go to Technical Documents and download the Installation Guide for more details.</p>
Care Instructions	<p>Vacuum to remove dust.</p> <p>Dab Zintra with a damp clean cloth and mild solution of liquid detergent and warm water. Repeat using only clean water, then pat dry with a lint free cloth.</p> <p>For difficult stains, use a solution of household bleach (10% bleach / 90% water). To remove the bleach, repeat using a clean, water dampened cloth, then pat dry.</p> <p>Always test in an inconspicuous area first and if you don't see the expected results, contact us.</p>
Warranty	<p>Visit FAQ for more details.</p>
Customisable	<p>Zintra Acoustic Panel - 100% Solution Dyed (Colour Through) Polyester</p> <p>12mm (1/2") - Density 2.4 kg /m² 0.5 lb/ft²</p>

BAFFLE SYSTEMS SWELL

Acoustics » Acoustic Baffles

Additional Comments	NRC Rating
	• Without Air Gap: Up to 0.95
	• With 24" (610mm) Air Gap: Up to 1.00

How to Specify	1. Select Design
	2. Select Size
	3. Select Zintra Colour

BAFFLE SYSTEMS SWELL

Acoustics » Acoustic Baffles

Colour & Finish Options

Zintra 12mm Solid PET



Bark



Brick



Cadet



Chambray



Cobalt



Ecru



Elderberry



Fossil



Frost



Grass



Greige



Ivory



Linen



Malachite



Mandarin



Meadow



Midnight



Ochre



Olive



Parchment



Pebble



Pewter



Saffron



Sky



Smoke

BAFFLE SYSTEMS SWELL

Acoustics » Acoustic Baffles



Slate



Storm



Sunshine



Tar



Twilight

Zintra Timber Print



Eucalyptus



Ironbark



Merbau



Spotted Gum

Zintra Premium Material



Terrazzo Light



Terrazzo Medium



Terrazzo Dark



Travertine Light



Travertine Medium



Travertine Dark



Shale Light



Shale Medium



Shale Dark



Raku Bone



Raku Luster



Raku Jade



Concrete Cast



Concrete Polished



Concrete Dark Tint

BAFFLE SYSTEMS SWELL

Acoustics » Acoustic Baffles



Terracotta Sun
Bleached



Terracotta Mission



Terracotta Antique

Zintra Premium Wood



Knotty Pine



Maple



Poplar



Australian Walnut



Claro Walnut



Palm Wood



Rustic Walnut



Cherry



Euro Beech



Lacewood

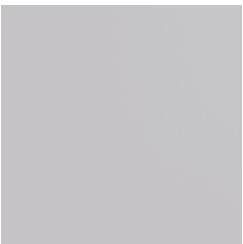


Redwood

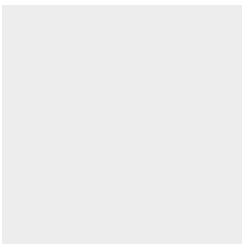


White Oak

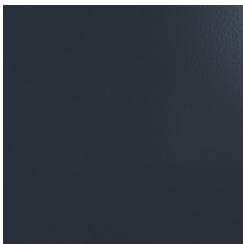
Powdercoat



Anodised Silver



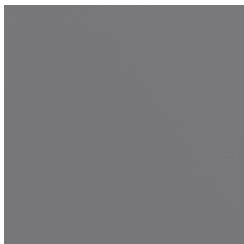
Bengal White



Denim



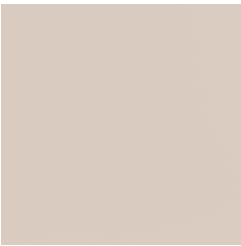
Fern



Gunmetal

BAFFLE SYSTEMS SWELL

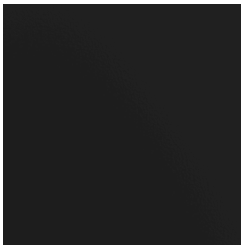
Acoustics » Acoustic Baffles



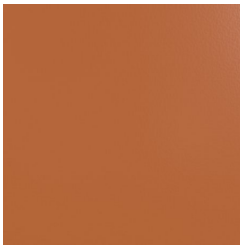
Light Grey



Marigold



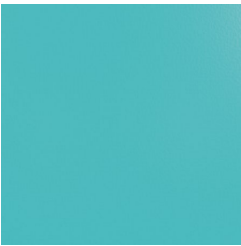
Matte Black



Spice



Tango



Teal



Terracotta