

# PATTERN PANEL GINKGO

Acoustics » Acoustic Panels



Brand: **Zintra**

Collections: **Pattern Panel**

Applications: **Ceilings, Walls**

1300 306 399

info@baresque.com.au

**baresque.com.au**

1 of 7

# PATTERN PANEL GINKGO

Acoustics » Acoustic Panels

---



Pattern Panel Ginkgo Detail

# PATTERN PANEL GINKGO

Acoustics » Acoustic Panels

Discover the 51 classic and contemporary designs available in Zintra Pattern Panels. Effortlessly elevate your space with style, texture, and superior sound absorption with Pattern Panel Ginkgo.

✓ Acoustic

✓ Bleach Cleanable

✓ Easy Clean

✓ Easy Install

## Description

Zintra Patterns offers a broad range of classic or contemporary panel designs that can be used on their own, or in conjunction with Zintra backing, to create beautiful, acoustic screens and wall coverings.

With virtually unlimited design options, each pattern can be intricately cut of out Zintra and paired with a matching or contrasting solid Zintra backing panel to achieve a unique aesthetic for walls or ceilings. Experience enhanced noise absorption and easy installation, while enjoying a broad range of neutral and vibrant Colours to suit any space.

**Ginkgo**, inspired by ginkgo biloba leaves

**Choose from 51 designs.**

Abhaya | Asiatic | Astra | Bengal | Bharata | Bhushan | Circuit | Cirque | Deepak | Devraj | Elephanta | Fishbone | Foliage | Gadiva | Garden Art | Ginkgo | Haimati | Hex | Indus | Jacks | Kali | Kerala | Krishnan | Links | Lost | Malini | Mandava | Marquise | Monsoon | Nadu | Noktalar | Origami | Padmesh | Perdita | Pivot | Pixel | Prose | Punto | Raja | Sakra | Sankaran | Sanskrit | Setro | Shard | Siptical | Stone Age | Sutra | Telugu | Vanishing | Vedic | Wamika

Not suitable as a freestanding product.

Elevate your environment with style, texture, contrast, and depth, all while creating a harmonious ambiance with superior sound absorption.

## Composition

Zintra Acoustic Panel - 100% Solution Dyed (Colour Through) Polyester

12mm (1/2") - Density 2.4 kg /m<sup>2</sup> 0.5 lb/ft<sup>2</sup>

24mm (1" ) - Density 3.6 kg /m<sup>2</sup> 0.75 lb/ft<sup>2</sup>

## Sustainability

Zintra is made from 100% recyclable materials.

- 60% post-consumer recycled content from PET bottles.
- 35% pre-consumer recycled content from PET chips
- 5% polylactic acid (PLA)

# PATTERN PANEL GINKGO

Acoustics » Acoustic Panels

---

## Dimensions

### Pattern Only

1220mm (48") x 2745mm (108') x 12mm (1/2")

### Pattern on Backer

1220mm (48") x 2745mm (108') x 24mm (1")

---

## Fire Rating

ASTM-E84 – Class A classification  
AS ISO 9705 – 2003 – Group 1 classification  
EN-13501 – B-s2-d0 classification

---

## Supplied As

Ships Flat Pack

Go to the Technical Documents and download the Installation Guide for more details.

---

## Suggested Installation

Go to Technical Documents and download the Installation Guide for more details.

---

## Care Instructions

Vacuum to remove dust.

Dab Zintra with a damp clean cloth and mild solution of liquid detergent and warm water. Repeat using only clean water, then pat dry with a lint free cloth.

For difficult stains, use a solution of household bleach (10% bleach / 90% water). To remove the bleach, repeat using a clean, water dampened cloth, then pat dry.

Always test in an inconspicuous area first and if you don't see the expected results, contact us.

---

## Warranty

Visit FAQ for more details.

---

## Customisable

The Zintra Acoustic Solutions range is customisable to your project. Please get in touch with your local contact for details.

---

# PATTERN PANEL GINKGO

Acoustics » Acoustic Panels

---

## Additional Comments **Patterns Only NRC Rating**

- Directly Mounted: 0.45
- With 2" (50mm) Air Gap: 0.85
- With 6" (152mm) Air Gap: 0.90
- With 12" (305mm) Air Gap: 0.95

## **Patterns on Backer NRC Rating**

- Directly Mounted: 0.75
- With 2" (50mm) Air Gap: 0.95
- With 6" (152mm) Air Gap: 1.0
- With 12" (305mm) Air Gap: 1.0

---

## How to Specify

1. Select Pattern design
2. Select Pattern only or Pattern on Backer.
3. Select Zintra Colour.

If selecting backer please state which colour is the pattern layer and which is the backer.

---

# PATTERN PANEL GINKGO

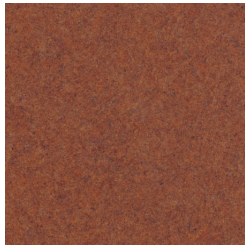
Acoustics » Acoustic Panels

## Colour & Finish Options

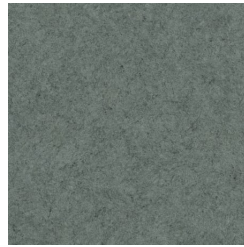
Zintra 12mm Solid PET



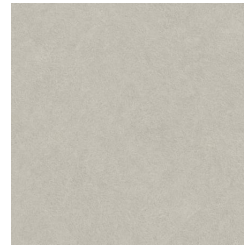
Bark



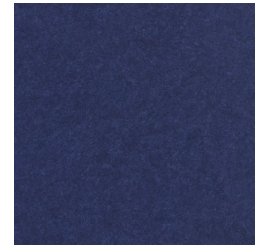
Brick



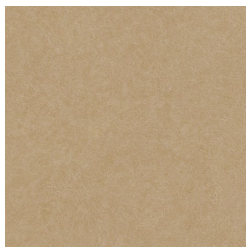
Cadet



Chambray



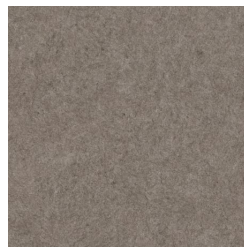
Cobalt



Ecru



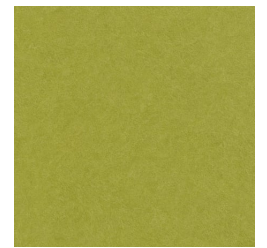
Elderberry



Fossil



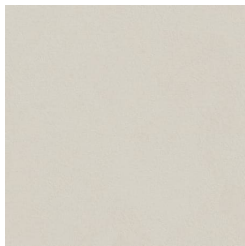
Frost



Grass



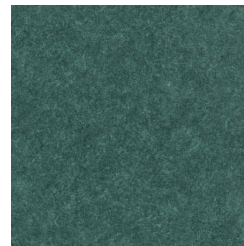
Greige



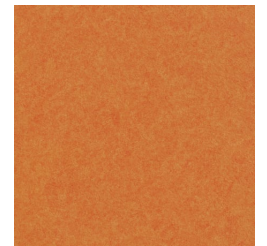
Ivory



Linen



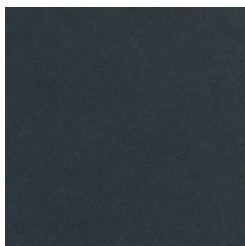
Malachite



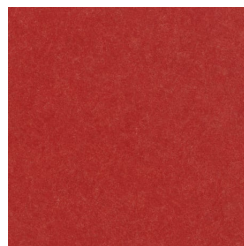
Mandarin



Meadow



Midnight



Ochre



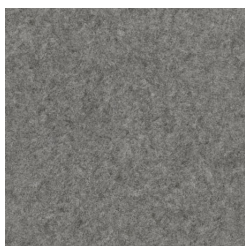
Olive



Parchment



Pebble



Pewter



Saffron



Sky



Smoke

# PATTERN PANEL GINKGO

Acoustics » Acoustic Panels

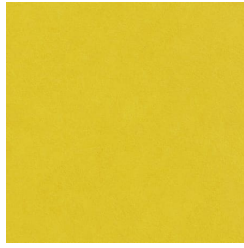
---



Slate



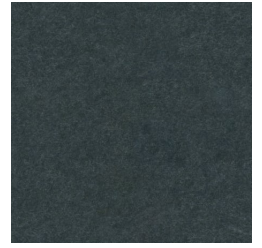
Storm



Sunshine



Tar



Twilight