

ETCH PANEL TESSELATE

Acoustics » Acoustic Panels



Brand: **Zintra**

Collections: **Etch Panel**

Applications: **Walls, Ceilings**

1300 306 399

info@baresque.com.au

baresque.com.au

1 of 9

ETCH PANEL TESSELATE

Acoustics » Acoustic Panels



Etch Panel Tessellate Hospitality



Etch Panel Tessellate Spotted Gum



Etch Panel Tessellate Fossil

ETCH PANEL TESSELATE

Acoustics » Acoustic Panels



Etch Panel Tesselate Spotted Gum Detail



Etch Panel Tesselate Detail

ETCH PANEL TESSELATE

Acoustics » Acoustic Panels

Explore the possibilities of spatial perception and artistic expression with Zintra Etch 3D panels, Tessellate design.

✓ Acoustic

✓ Bleach Cleanable

✓ Easy Clean

✓ Easy Install

Description

Zintra Etch, where acoustic absorption meets dynamic 3D design. With a range of subtle textures, Zintra Etch brings cutting-edge aesthetics and acoustic functionality to your commercial, hospitality, or institutional interior.

Discover the extensive selection of understated to statement Colours in Zintra Etch, allowing you to create a welcoming atmosphere while effectively managing sound. This cost-effective sound and design solution cultivates calming environments, promoting productivity and well-being.

Zintra Etch seamlessly integrates with plain Zintra panels, offering versatility in design coordination. You can also explore the option of replicating your unique Etch pattern in Zintra on Zintra, for a truly customised solution.

Experience the benefits of Zintra Etch, including pattern matching with seamless hidden joins (excluding VJ Angle and Kaleido). The panel size enables join-free installations from floor to ceiling, making the fitting process effortless.

Tessellate: Where interlocking shapes create a seamless tapestry of geometric beauty. With its intricate design and modern sophistication, Tessellate transforms walls into works of art, adding depth and character to your space.

Zintra Etch is available in 15 great designs

Craze | Cubix | Deviate | Kaleido | Lamella | Reed Bed | Sine | Spectrum | Tessellate | Tetris | Vino | VJ Board Angle | VJ Board Narrow | VJ Board Wide | Volta:

Etch is a 3mm deep V groove.

Not suitable as a free standing product.

Composition

Zintra Acoustic Panel - 100% Solution Dyed (Colour Through) Polyester

12mm (1/2") - Density 2.4 kg /m² 0.5 lb/ft²

Sustainability

Zintra is made from 100% recyclable materials.

- 60% post-consumer recycled content from PET bottles.
- 35% pre-consumer recycled content from PET chips
- 5% polylactic acid (PLA)

Dimensions

1219mm (48") x 2743mm (108") x 12mm (1/2")

ETCH PANEL TESSELATE

Acoustics » Acoustic Panels

Fire Rating	ASTM-E84 – Class A classification AS ISO 9705 – 2003 – Group 1 classification EN-13501 – B-s2-d0 classification
Supplied As	Zintra Etch panel in selected pattern
Fabrication Techniques	Utility knife and CNC with oscillating knife.
Assembly & Delivery	<p>Ships Flat Pack</p> <p>Install using one of these four common techniques.</p> <ol style="list-style-type: none">1. Direct to the substrate2. Z-Clips3. Stand Offs4. Mechanical Fastener <p>Go to the Technical Documents and download the Installation Guide for more details.</p>
Suggested Installation	Go to Technical Documents and download the Installation Guide for more details.
Care Instructions	<p>Vacuum to remove dust.</p> <p>Dab Zintra with a damp clean cloth and mild solution of liquid detergent and warm water. Repeat using only clean water, then pat dry with a lint free cloth.</p> <p>For difficult stains, use a solution of household bleach (10% bleach / 90% water). To remove the bleach, repeat using a clean, water dampened cloth, then pat dry.</p> <p>Always test in an inconspicuous area first and if you don't see the expected results, contact us.</p>
Warranty	Visit FAQ for more details.
Customisable	The Zintra Acoustic Solutions range is customisable to your project. Please get in touch with your local contact for details.
Additional Comments	NRC 0.45 -0.95

ETCH PANEL TESSELATE

Acoustics » Acoustic Panels

How to Specify

1. Select Etch design
 2. Select Zintra Colour
-

ETCH PANEL TESSELATE

Acoustics » Acoustic Panels

Colour & Finish Options

Zintra 12mm Solid PET



Bark



Brick



Cadet



Chambray



Cobalt



Ecru



Elderberry



Fossil



Frost



Grass



Greige



Ivory



Linen



Malachite



Mandarin



Meadow



Midnight



Ochre



Olive



Parchment



Pebble



Pewter



Saffron



Sky



Smoke

ETCH PANEL TESSELATE

Acoustics » Acoustic Panels



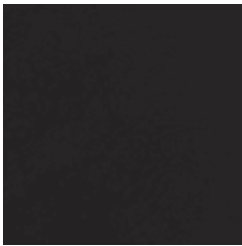
Slate



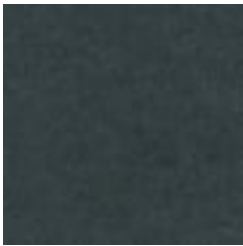
Storm



Sunshine



Tar

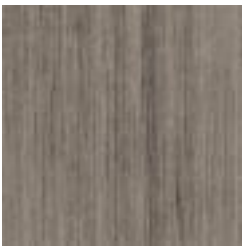


Twilight

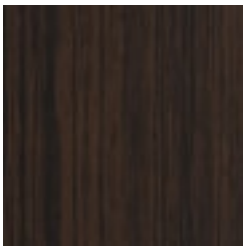
Zintra Timber Print



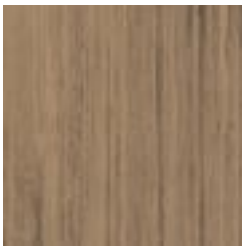
Eucalyptus



Ironbark



Merbau



Spotted Gum

Zintra Premium Wood



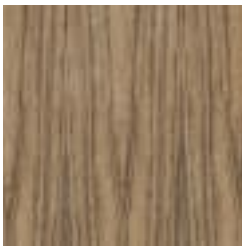
Knotty Pine



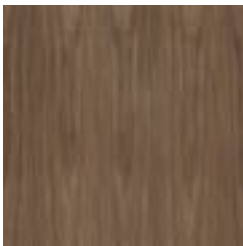
Maple



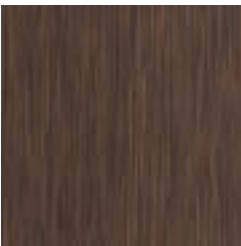
Poplar



Australian Walnut



Claro Walnut



Palm Wood



Rustic Walnut



Cherry



Euro Beech



Lacewood



Redwood

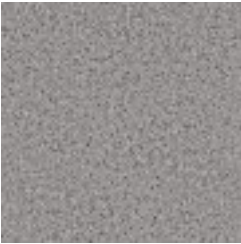


White Oak

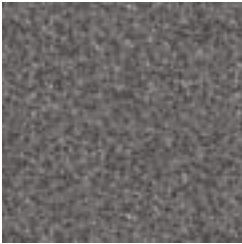
Zintra Premium Material

ETCH PANEL TESSELATE

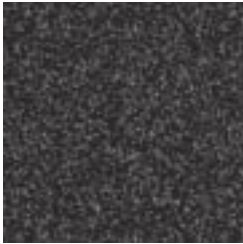
Acoustics » Acoustic Panels



Terrazzo Light



Terrazzo Medium



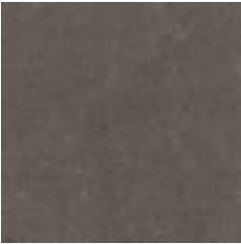
Terrazzo Dark



Travertine Light



Travertine Medium



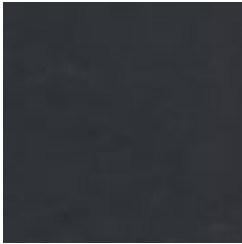
Travertine Dark



Shale Light



Shale Medium



Shale Dark



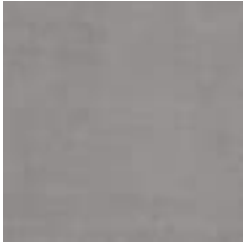
Raku Bone



Raku Luster



Raku Jade



Concrete Cast



Concrete Polished



Concrete Dark Tint



Terracotta Sun
Bleached



Terracotta Mission



Terracotta Antique