

EMBOSS PANEL MOLECULAR

Acoustics » Acoustic Panels



Brand: **Zintra**

Collections: **Emboss Panel**

Applications: **Walls**

1300 306 399

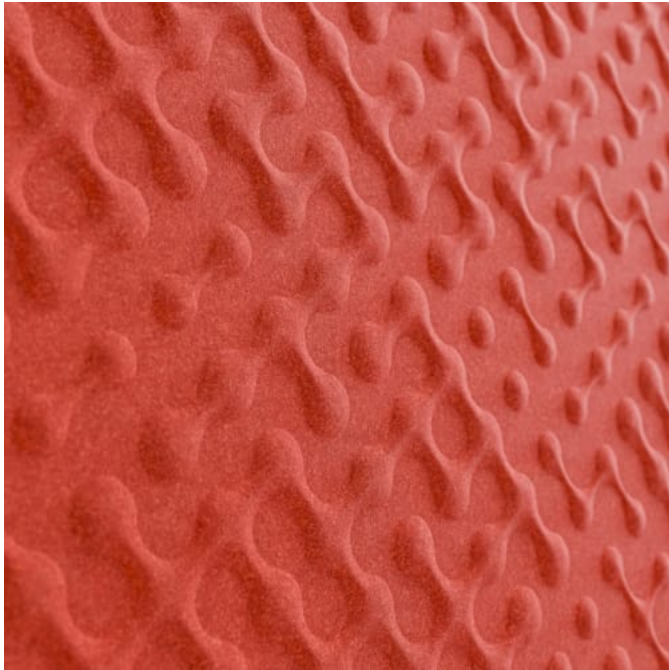
info@baresque.com.au

baresque.com.au

1 of 14

EMBOSS PANEL MOLECULAR

Acoustics » Acoustic Panels



Emboss Panel Molecular Detail Ochre



Emboss Panel Molecular Detail



EMBOSS PANEL MOLECULAR

Acoustics » Acoustic Panels



EMBOSS PANEL MOLECULAR

Acoustics » Acoustic Panels



EMBOSS PANEL MOLECULAR

Acoustics » Acoustic Panels



EMBOSS PANEL MOLECULAR

Acoustics » Acoustic Panels



EMBOSS PANEL MOLECULAR

Acoustics » Acoustic Panels



EMBOSS PANEL MOLECULAR

Acoustics » Acoustic Panels



EMBOSS PANEL MOLECULAR

Acoustics » Acoustic Panels



EMBOSS PANEL MOLECULAR

Acoustics » Acoustic Panels

Introducing a touch of opulence to acoustic solutions, elevating spaces with both sound absorption and tactile sophistication with Zintra Emboss Panel Molecular.

- ✓ Acoustic
- ✓ Bleach Cleanable
- ✓ Easy Clean
- ✓ Easy Install

Description

Zintra Emboss Panels brings a touch of luxury to acoustic solutions, combining timeless craftsmanship with advanced technology. These tactile three-dimensional panels create an immersive experience that transforms the ambiance of any space. The warm heather of Zintra softens the environment, ensuring that even the most austere spaces feel inviting.

Designed for seamless installation, Zintra Emboss Panels can be installed both vertically or horizontally, offering versatile design possibilities. They provide more than just noise absorption—they tell a story with every surface. Their intricate patterns and dynamic visual effects shift with perspective, adding depth and warmth to any room, making conversations flow effortlessly without echoes or disturbances.

Molecular, inspired by the intricate world of molecules and atomic structured. Molecular brings a captivating aesthetic to your space. This mesmerizing pattern features a network of interconnected shapes forming a visually dynamic and intriguing design.

Zintra Emboss panels offer a visual symphony that sparks imagination, adding a dash of enchantment to any environment.

Please note, Zintra Emboss is suitable for single-sided applications only.

Available in 18 great designs.

Ascend | Celium | Constellation | Corduroy | Corduroy Fine | Cumulus | Damask | Jungle | Linked | Molecular | Rivulet | Sandglass | Scallop | Stitched | Tapestry | Tidal | Tufted | Woven

In hospitality, commercial, and care environments, Zintra Emboss Panels don't just absorb sound – they elevate spaces with their luxurious textures and calming designs, creating atmospheres that are as visually captivating as they are acoustically sound.

Please note: Zintra Emboss is suitable for single-sided applications only.

Don't just design spaces. Craft experiences.

Composition

Zintra Acoustic Panel - 100% Solution Dyed (Colour Through) Polyester
12mm (1/2") - Density 2.4 kg /m² 0.5 lb/ft²

EMBOSS PANEL MOLECULAR

Acoustics » Acoustic Panels

Sustainability	<p>Zintra is made from 100% recyclable materials.</p> <ul style="list-style-type: none">• 60% post-consumer recycled content from PET bottles.• 35% pre-consumer recycled content from PET chips• 5% polylactic acid (PLA)
Dimensions	<p>Available in 12mm (1/2") 2743mm (108") x 1118mm (44")</p> <p>"Emboss Panel patterns will align with a commercial tolerance of +/- 1mm. Panel thickness may vary by 15%. Pack as required to align face."</p>
Fire Rating	<p>ASTM-E84 – Class A classification AS ISO 9705 – 2003 – Group 1 classification EN-13501 – B-s2-d0 classification</p>
Supplied As	<p>1 x Emboss Panel in selected pattern</p>
Fabrication Techniques	<p>Utility knife and CNC with oscillating knife.</p>
Assembly & Delivery	<p>Ships Flat Pack</p> <p>Go to the Technical Documents and download the Installation Guide for more details.</p>
Suggested Installation	<p>Go to Technical Documents and download the Installation Guide for more details.</p>
Care Instructions	<p>Vacuum to remove dust.</p> <p>Dab Zintra with a damp clean cloth and mild solution of liquid detergent and warm water. Repeat using only clean water, then pat dry with a lint free cloth.</p> <p>For difficult stains, use a solution of household bleach (10% bleach / 90% water). To remove the bleach, repeat using a clean, water dampened cloth, then pat dry.</p> <p>Always test in an inconspicuous area first and if you don't see the expected results, contact us.</p>
Warranty	<p>Visit FAQ for more details.</p>

EMBOSS PANEL MOLECULAR

Acoustics » Acoustic Panels

Additional Comments NRC 0.35

- How to Specify
- 1. Select Emboss design
 - 2. Select Zintra Colour
-

EMBOSS PANEL MOLECULAR

Acoustics » Acoustic Panels

Colour & Finish Options

Zintra 12mm Solid PET



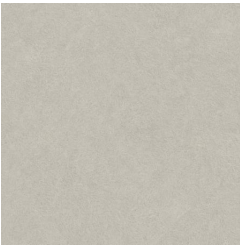
Bark



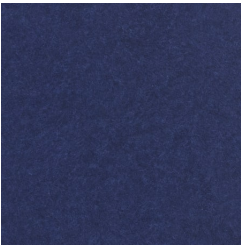
Brick



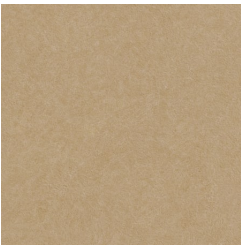
Cadet



Chambray



Cobalt



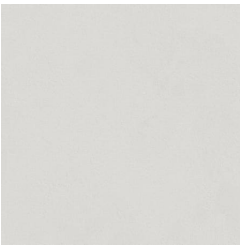
Ecru



Elderberry



Fossil



Frost



Grass



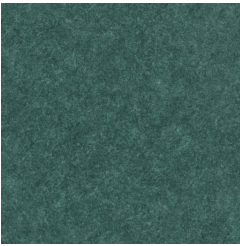
Greige



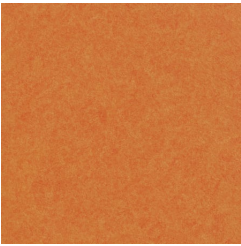
Ivory



Linen



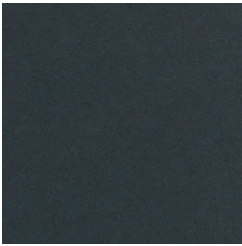
Malachite



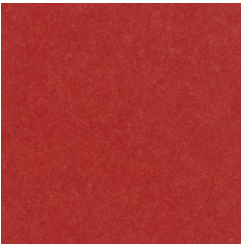
Mandarin



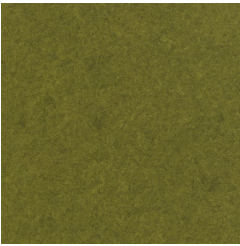
Meadow



Midnight



Ochre



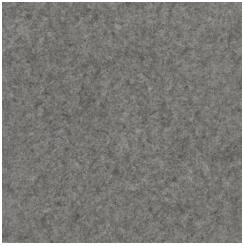
Olive



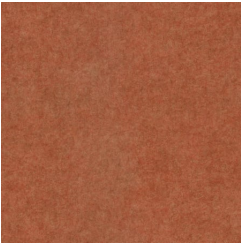
Parchment



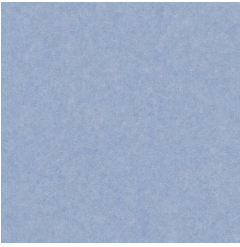
Pebble



Pewter



Saffron



Sky



Smoke

EMBOSS PANEL MOLECULAR

Acoustics » Acoustic Panels



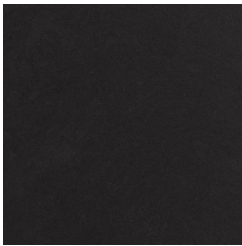
Slate



Storm



Sunshine



Tar



Twilight

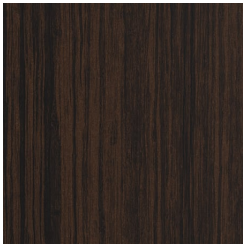
Zintra Timber Print



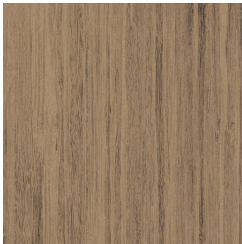
Eucalyptus



Ironbark



Merbau



Spotted Gum