

# CHARISMA ECO

Fabrics » Woven Fabrics

---



Brand: **United Fabrics**

Applications: **Upholstery**

1300 306 399

[info@baresque.com.au](mailto:info@baresque.com.au)

[baresque.com.au](http://baresque.com.au)

1 of 6

# CHARISMA ECO

**Fabrics** » Woven Fabrics

---



# CHARISMA ECO

Fabrics » Woven Fabrics

Go green with style! Charisma Eco's recycled yarns and trendy hues update a classic chenille for eco-conscious design.

✓ **Stain Resistant**

✓ **PFAS Free**

Description	<p>Introducing Charisma Eco, a pattern that received an eco-friendly makeover! A relaunch of this durable chenille with refreshed colours and recycled yarns.</p> <p>Charisma Eco is woven with 100% recycled polyester and features a PFAS-free finish offering stain resistance and easy cleanability.</p> <p>The colourways include vibrant and more trend-forward sage greens and terracotta pinks, plus classic blues and neutrals. Charisma can remain your go-to fabric with even more earth-friendly benefits!</p>
Composition	<p>100% Recycled polyester</p> <p>Backing: 100% Acrylic latex</p>
Pattern Repeat Size	Not Applicable
Roll Size	137cm x 45.7m - Available by the lineal metre
Weight	787 g/m <sup>2</sup>
Abrasion	170,000 double rubs (Wyzenbeek)
Fire Rating	This product can be treated with a fire retardant that will ensure it meets Australian Standard 1530.3. Contact Baresque for details.
Lead Time	<ul style="list-style-type: none"><li>• 2-weeks (approx.) from Wednesday, subject to stock availability.</li><li>• Additional 1-week for Western Australia.</li><li>• Express delivery is available subject to a surcharge. Contact Baresque for details and pricing.</li></ul>

# CHARISMA ECO

Fabrics » Woven Fabrics

---

## Care Instructions

Spot clean only with water-based upholstery shampoo or foam upholstery cleaner.

To prevent overall soiling, frequent vacuuming or light brushing with a non-metallic, stiff bristle brush to remove dust and grime is recommended.

When cleaning a spill, blot immediately to remove spilled liquid or material. It is recommended to pretest on a small inconspicuous area before proceeding to clean the surface of the upholstery. To avoid circling, clean stains from the outside to the middle of the affected area. While cleaning, be careful not to saturate the fabric surface.

Pile fabrics may require brushing with a non-metallic, stiff bristle brush to restore plush appearance.

Use a professional furniture cleaning service when an overall soiled condition has been reached.

---

## Warranty

2-year warranty. Visit [baresque.com.au/warranty](https://baresque.com.au/warranty) for complete details.

---

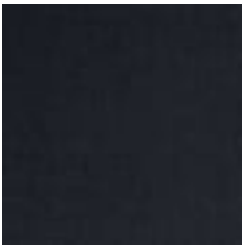
# CHARISMA ECO

Fabrics » Woven Fabrics

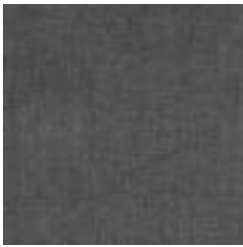
## Colour & Finish Options



COLOURWAY CARD



ADMIRAL



ANCHOR



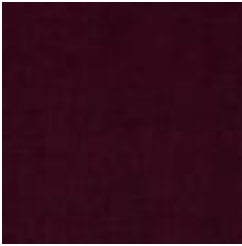
AQUARIUS



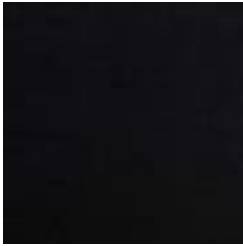
BALLERINA



BLUE JAY



BOYSENBERRY



CAVIAR



CIDER



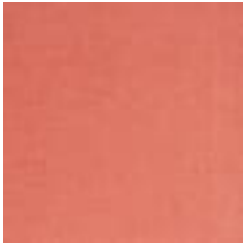
CRANBERRY



DUMPLING



EMERALD



FLAMINGO



FRENCH GREY



FROSTED SAGE



HOT TAMALE



IRON



JEWEL



LADYBUG



MASCARPONE



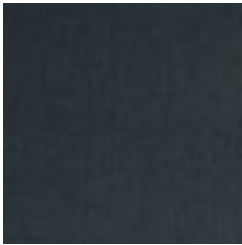
MATCHA



DUSTY MAUVE



MIRRORBALL



PRUSSIAN BLUE

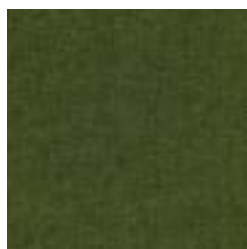


SEPIA

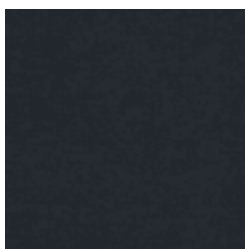
# CHARISMA ECO

Fabrics » Woven Fabrics

---



SHAMROCK



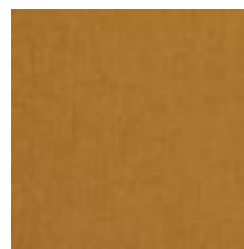
SUBMARINE



SUGAR COOKIE



SUGAR PLUM



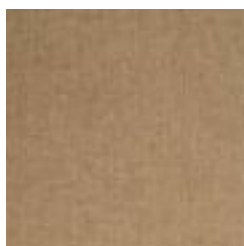
SUNFLOWER



SWEET TEA



THISTLE



TOAST