

HATCH

Fabrics » Woven Fabrics



Brand: **Burch**

Applications: **Upholstery**

1300 306 399

info@baresque.com.au

baresque.com.au

1 of 4

HATCH

Fabrics » Woven Fabrics

Hatch is a crypton high performance fabric with 100,000 rubs and bleach cleanable that's available in 8 colourways.

- ✓ **Crypton**
- ✓ **Stain Resistant**
- ✓ **Greenguard Gold Certified**
- ✓ **Bleach Cleanable**
- ✓ **Water Resistant**

Description Hatch exudes charm with a nuanced approach to colour blending. This palette of eight multifaceted shades cohesively connects colours within a space.

Composition CRYPTON - 100% Polyester

Environmental Info Greenguard Certifications contributes towards LEED credits for low-emitting furniture and ensures compliance with Business and Institutional Furniture Manufacturers Association (BIFMA) X7.1 standard and BIFMA e3 credit 7.6.1.

Greenguard Gold Certification standard includes:

- * Health-based criteria for additional chemicals and requires lower total VOC emissions levels to help ensure that products are acceptable for use in environments like schools and healthcare facilities.
- * Products that also comply with requirements of the state of California's Department of Public Health (CDPH) "Standard Method for the Test and Evaluation of Volatile Organic Chemical Emissions from Indoor Sources Using Environmental Chambers, Version 1.2 (2017)" (also known as California Section 01350).
- * Products that are compliant with the BIFMA X7.1 standard and BIFMA e3 credits 7.6.1, 7.6.2, and 7.6.3.

Pattern Repeat Size Not Applicable

Roll Size 137cm x 45.7m - Available by the lineal metre

Weight 641 g/m²

Abrasion 100,000 Double Rubs (Wyzenbeek)

Fire Rating Tested in accordance with AS1530.3

Spread of Flame Index - 0

Smoke Developed Index - 5

Lead Time

- 2-weeks (approx.) from Wednesday, subject to stock availability.
 - Additional 1-week for Western Australia.
 - Express delivery is available subject to a surcharge. Contact Baresque for details and pricing.
-

Care Instructions

Always use a clean, white, soft cloth.

Prepare a mixture of 1/3 Napisan and 2/3 Fab. Combine the mixture with water to make a paste about the consistency of soft margarine i.e. not too runny. Apply using a soft bristle brush. Leave for 10 minutes.

Use a brush and clean, warm water to remove the paste being sure to renew the water so that it remains clean.

Never use stiff bristles or wire brushes, as they may damage the fabric. To prevent soil build-up, frequent vacuuming is recommended.

Using a cloth to pat dry will help eliminate watermarks.

For more difficult stains, dampen a soft white cloth with a solution of household bleach (10% bleach / 90% water). Rub gently. Rinse with a water dampened cloth to remove bleach concentration.

Always test in an inconspicuous area first. If care instructions don't deliver the expected results, cease cleaning method immediately and contact Baresque for assistance.

Warranty

2-year warranty. Visit baresque.com.au/warranty for complete details.

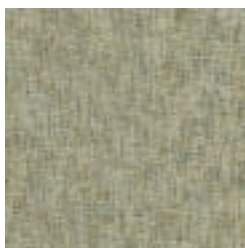
HATCH

Fabrics » Woven Fabrics

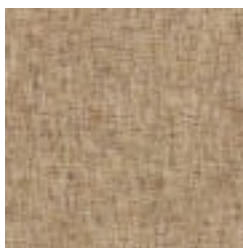
Colour & Finish Options



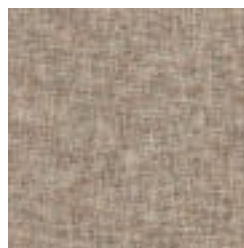
1012341 OASIS



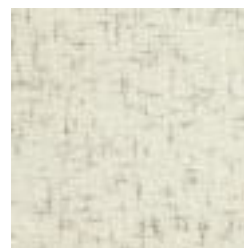
1012342 DUCKWEED



1012343 NECTAR



1012344 PEONY



1012345 ECRU



1012346 OPAL



1012347 CARDIGAN



1012348 GOTHIC