

CANOPY

Fabrics » Woven Fabrics



Brand: **Burch**

Applications: **Upholstery**

1300 306 399

info@baresque.com.au

baresque.com.au

1 of 5

CANOPY

Fabrics » Woven Fabrics



1300 306 399

info@baresque.com.au

baresque.com.au

2 of 5

CANOPY

Fabrics » Woven Fabrics

Made of post-consumer recycled polyester, Canopy has an organic natural pattern that's available in 12 colourways.

- ✓ **Crypton**
- ✓ **Greenguard Gold Certified**
- ✓ **Water Resistant**
- ✓ **Stain Resistant**
- ✓ **Bleach Cleanable**

Description	Canopy's abstract and whimsical dotted leaf is a breath of fresh air. Twelve enlightened shades featuring Stratus, Foliage, and Breeze are part of this lively palette.
Composition	CRYPTON - 61% Post consumer recycled polyester 39% Polyester
Environmental Info	<p>Greenguard Certifications contributes towards LEED credits for low-emitting furniture and ensures compliance with Business and Institutional Furniture Manufacturers Association (BIFMA) X7.1 standard and BIFMA e3 credit 7.6.1.</p> <p>Greenguard Gold Certification standard includes:</p> <p>* Health-based criteria for additional chemicals and requires lower total VOC emissions levels to help ensure that products are acceptable for use in environments like schools and healthcare facilities.</p> <p>* Products that also comply with requirements of the state of California's Department of Public Health (CDPH) "Standard Method for the Test and Evaluation of Volatile Organic Chemical Emissions from Indoor Sources Using Environmental Chambers, Version 1.2 (2017)" (also know as California Section 01350).</p> <p>* Products that are compliant with the BIFMA X7.1 standard and BIFMA e3 credits 7.6.1, 7.6.2, and 7.6.3.</p>
Pattern Repeat Size	41.1cm V / 37.6 cm H
Roll Size	137cm wide X 55m - Available by the lineal metre
Weight	498 g/m ²
Abrasion	63,000 double rubs (Wyzenbeek)
Fire Rating	This product can be treated with a fire retardant that will ensure it meets Australian Standard 1530.3. Contact Baresque for details.

Lead Time

- 2-weeks (approx.) from Wednesday, subject to stock availability.
 - Additional 1-week for Western Australia.
 - Express delivery is available subject to a surcharge. Contact Baresque for details and pricing.
-

Care Instructions

Always use a clean, white, soft cloth.

Prepare a mixture of 1/3 Napisan and 2/3 Fab. Combine the mixture with water to make a paste about the consistency of soft margarine i.e. not too runny. Apply using a soft bristle brush. Leave for 10 minutes.

Use a brush and clean, warm water to remove the paste being sure to renew the water so that it remains clean.

Never use stiff bristles or wire brushes, as they may damage the fabric. To prevent soil build-up, frequent vacuuming is recommended.

Using a cloth to pat dry will help eliminate watermarks.

For more difficult stains, dampen a soft white cloth with a solution of household bleach (10% bleach / 90% water). Rub gently. Rinse with a water dampened cloth to remove bleach concentration.

Always test in an inconspicuous area first. If care instructions don't deliver the expected results, cease cleaning method immediately and contact Baresque for assistance.

Warranty

2-year warranty. Visit baresque.com.au/warranty for complete details.

CANOPY

Fabrics » Woven Fabrics

Colour & Finish Options



COLOURWAY CARD



1012159 DRIFTWOOD



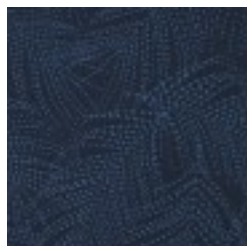
1012160 CREAM



1012161 STRATUS



1012162 BOULDER



1012163 SAPPHIRE



1012164 AZURE



1012165 AQUAMARINE



1012166 BREEZE



1012167 FOLIAGE



1012168 HONEY



1012169 SIENNA



1012170 SANGRIA