

# MARGARITA LAGUNA

Fabrics » Woven Fabrics



Brand: **Panaz**

Applications: **Upholstery**

1300 306 399

[info@baresque.com.au](mailto:info@baresque.com.au)

[baresque.com.au](http://baresque.com.au)

1 of 5

# MARGARITA LAGUNA

**Fabrics** » Woven Fabrics

---



# MARGARITA LAGUNA

Fabrics » Woven Fabrics

Made of 100% recycled materials, Margarita is outdoor suitable, water and stain resistant. Available in 10 colourways.

✓ **Anti-Microbial**

✓ **Outdoor Suitable**

✓ **Stain Resistant**

✓ **Water Resistant**

## Description

Embrace the spirit of the Mediterranean with our first 100% recycled outdoor collection Laguna.

Inspired by the relaxed, pastel landscapes of Mediterranean islands, Laguna features classic geometrics and plains in a rejuvenating colour palette.

Woven from 100% recycled yarns, Laguna gives options for exterior spaces that are kinder to the environment, with high light fastness, stain resistant and antimicrobial properties to ensure the fabric looks and performs better for longer.

## Composition

100% Recycled Polypropylene

## Sustainability

100% Recycled Materials

Latex Free

No heavy metals

Phthalate Free

## Pattern Repeat Size

17 cm (Height) / 17 cm (Width)

## Roll Size

140cm x N/A - Available by the lineal metre.

## Weight

330 g/m<sup>2</sup>

## Abrasion

30,000+ (Martindale Rubs)

## Lead Time

- 2-weeks (approx.) from Wednesday, subject to stock availability.
- Additional 1-week for Western Australia.
- Express delivery is available subject to a surcharge. Contact Baresque for details and pricing.



# MARGARITA LAGUNA

Fabrics » Woven Fabrics

---

## Care Instructions

- \* Vacuum and wipe clean routinely with a microfibre cloth lightly dampened with cold water only.
- \* Soak up spillages as soon as possible with an absorbent dry cloth to prevent staining.
- \* If soiling has accumulated use a mild proprietary cleaner (non-alkaline). Take care to remove all soap residues and dry with a clean absorbent cloth. Then brush pile back to its natural direction.
- \* Do not steam clean - heat seals its stains
- \* Do not use bleach
- \* Do not tumble dry
- \* Do not dry clean
- \* Do not fully immerse in water
- \* Do not apply solvents, alcohol, or any other chemical cleaners

---

## Warranty

2-year warranty. Visit [baresque.com.au/warranty](https://baresque.com.au/warranty) for complete details.

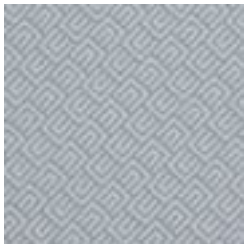
---

# MARGARITA LAGUNA

Fabrics » Woven Fabrics

## Colour & Finish Options

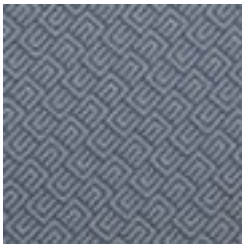
COLOURWAY  
CARD



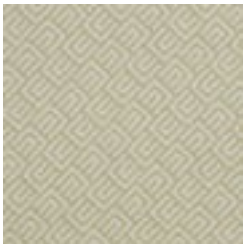
108 DELPH



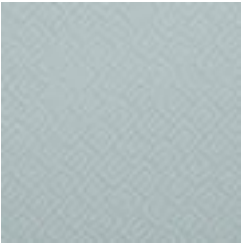
110 PACIFIC



192 INK



209 WASABI



251 EAU DE NILE



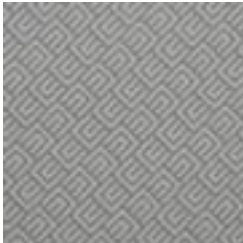
314 MUSTARD



574 DARK CORAL



823 CHABLIS



904 PEWTER