

# RECESS

Fabrics » Woven Fabrics



Brand: **Tekloom**

Applications: **Upholstery**

1300 306 399

[info@baresque.com.au](mailto:info@baresque.com.au)

[baresque.com.au](http://baresque.com.au)

1 of 4

# RECESS

Fabrics » Woven Fabrics

Bring back carefree playtime vibes with Recess! A vibrant checkerboard pattern that's durable and easy to clean making it perfect for any space.

✓ Bleach Cleanable	✓ PFAS Free	✓ Stain Resistant
Description	<p>Reminisce on your favourite time of day everywhere you go — a moment of respite, an era of freedom, an uninterrupted time to play.</p> <p>Recess holds a special place in our memories and now can hold a special place in your interior. Recess boasts several vibrant colours embedded into a detailed checkerboard pattern.</p> <p>Utilizing Tekloom® technology, it has an impermeable surface, passes one million double rubs, inherently soil and stain-resistant, and is bleach-cleanable.</p>	
Composition	<p>88% Polyester, 12% Tekloom TPE (Graffiti-Free)</p> <p>Backing: Acrylic</p>	
Environmental Info	<p>PVC/Phthalates free</p> <p>No added fire retardant</p> <p>Healthier Hospitals compliant</p>	
Pattern Repeat Size	<p>Not Applicable</p>	
Roll Size	<p>137cm x 45.7m - Available by the lineal metre</p>	
Abrasion	<p>1,000,000+ Double Rubs (Wyzenbeek)</p>	
Fire Rating	<p>Tested in accordance with AS1530.3</p> <p>Spread of Flame Index - 0</p> <p>Smoke Developed Index - 4</p>	
Lead Time	<ul style="list-style-type: none"><li>• 2-weeks (approx.) from Wednesday, subject to stock availability.</li><li>• Additional 1-week for Western Australia.</li><li>• Express delivery is available subject to a surcharge. Contact Baresque for details and pricing.</li></ul>	

# RECESS

Fabrics » Woven Fabrics

---

## Care Instructions

Always use a clean, white, soft cloth.

Clean in situ using a damp cloth and mild detergent. Sponge down afterwards with a clean, damp cloth.

Using a cloth to pat dry will help eliminate watermarks.

Ensure the pile is brushed back to its natural direction.

Upholstered furniture should be regularly vacuumed or brushed with a soft nylon brush to remove grit or dust, which may damage the pile.

Never use stiff bristles or wire brushes, as they may damage the fabric.

For more difficult stains, dampen a soft white cloth with a solution of household bleach (10% bleach / 90% water). Rub gently. Rinse with a water dampened cloth to remove bleach concentration.

Always test in an inconspicuous area first. If care instructions don't deliver the expected results, cease cleaning method immediately and contact Baresque for assistance.

---

## Warranty

2-year warranty. Visit [baresque.com.au/warranty](https://baresque.com.au/warranty) for complete details.

---

# RECESS

Fabrics » Woven Fabrics

## Colour & Finish Options

COLOURWAY  
CARD



CORAL



FRESCO



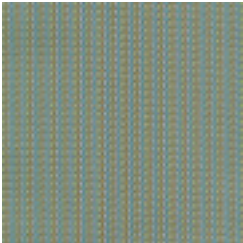
GRAIN



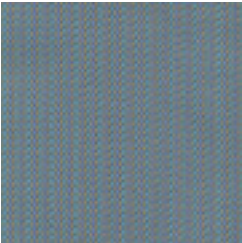
HARBOR



MAHOGANY



MEADOW



QUARRY