

SECRET GARDEN

Wallcoverings » Commercial Wallcoverings



Brand: **Versa**

Applications: **Walls**

1300 306 399

info@baresque.com.au

baresque.com.au

1 of 5

SECRET GARDEN

Wallcoverings » Commercial Wallcoverings



SECRET GARDEN

Wallcoverings » Commercial Wallcoverings

A floral motif woven onto a durable, low VOC vinyl substrate with EPD and HPD certifications, perfect balance between beauty and sustainability.

- ✓ Bleach Cleanable
- ✓ Low VOC
- ✓ EPD Certified
- ✓ HPD Certified

Description	<p>Immerse yourself in Secret Garden. The layered floral motif and undulating botanical shapes are combined with a cloth-like emboss that envelops any interior space.</p> <p>The classic 12-SKU palette of refreshing whites and neutrals also include calming pops of antique rose, blue, and green. Type II 20 oz.; Osnaburg backing; reverse hang / random match installation.</p>
Composition	Vinyl face on a woven backing 20oz (452 g/m²)
Environmental Info	<p>Formaldehyde free</p> <p>Heavy metals free</p> <p>Perfluorooctanoic acid free</p> <p>No solvent inks</p> <p>Low VOC emissions. Any VOCs dissipate quickly (faster than paint) through normal ventilation and have no recognized adverse impact on indoor air quality.</p> <p>Durability means products do not need to be replaced regularly due to wear and tear and being cleanable, vinyl products are ideal for helping keep commercial environments clean of bacteria.</p> <p>Baresque will only deal with vinyl manufacturers that comply with applicable state and federal regulations, provide a factory that is safe and clean for its employees to work in, recycle scrap and inks during the manufacturing process to minimize waste related to production.</p>
Pattern Repeat Size	Not Applicable
Roll Size	132/137cm x 27.4m - Available by the lineal metre.
Weight	452 (g/m²)

SECRET GARDEN

Wallcoverings » Commercial Wallcoverings

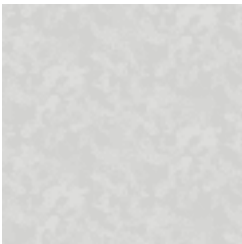
Fire Rating	<p>Tested in accordance with AS ISO 9705 2003 for the purpose of determining the Group Number classification as required by the Building Code of Australia for the control of fire spread on interior wall and ceiling linings.</p> <p>The result achieved was: Classification - Group 2 Specific Extinction - Less than 250m²/kg</p>
Lead Time	<ul style="list-style-type: none">• 2-weeks (approx.) from Wednesday, subject to stock availability.• Additional 1-week for Western Australia.• Express delivery is available subject to a surcharge. Contact Baresque for details and pricing.
Suggested Installation	<p>Reverse hang / overlap and double cut.</p> <p>Baresque recommends and supply Roman brand adhesives and primers.</p>
Care Instructions	<p>Always use a clean, white, soft cloth.</p> <p>Use cloth with any of the following in preferred order of use:</p> <ol style="list-style-type: none">1: Clear warm water2: Mild solution of liquid detergent and warm water3: Isopropyl Alcohol (a.k.a. rubbing alcohol) <p>Remove any detergent with a clean, damp cloth. Gently pat dry.</p> <p>For more difficult stains, dampen a soft white cloth with a solution of household bleach (10% bleach / 90% water). Rub gently.</p> <p>Rinse with a water dampened cloth to remove bleach concentration.</p> <p>DO NOT USE solvent based or concentrated abrasive cleaning agents, lacquer thinners, nail polish remover as these may cause discolouration over a period of time.</p> <p>Always test in an inconspicuous area first. If care instructions don't deliver the expected results, cease cleaning method immediately and contact Baresque for assistance.</p>
Warranty	<p>5-year warranty. Visit baresque.com.au/warranty for complete details.</p>

SECRET GARDEN

Wallcoverings » Commercial Wallcoverings

Colour & Finish Options

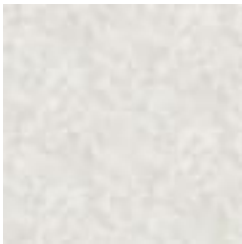
COLOURWAY
CARD



A215-017 REFRESH



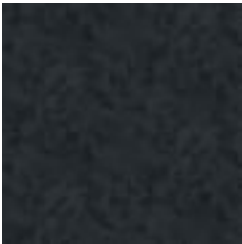
A215-135 TERRACE



A215-146 HEAVY
CREAM



A215-224
COUNTRYSIDE



A215-306 TRITON



A215-372 WATERFALL



A215-580 CHERRY
BLOSSOM



A215-692 WICKLOW



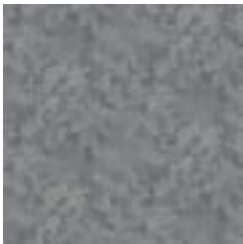
A215-829 ESTATE



A215-843 STONE
LANTERN



A215-861 HERITAGE



A215-996 OVERCAST