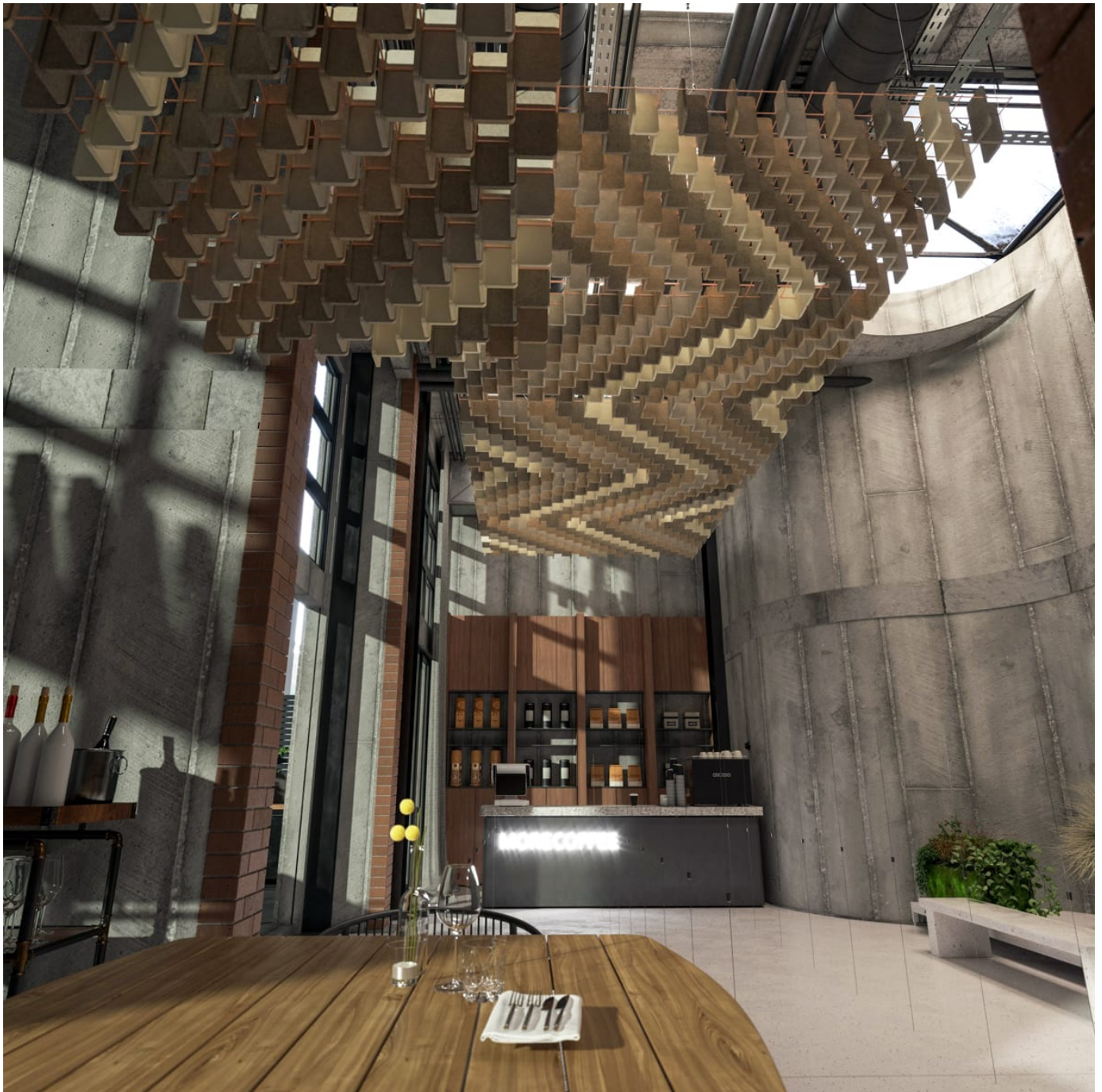


# MESH BAFFLES HERRINGBONE

Acoustics » Acoustic Baffles



Brand: **Zintra**

Collections: **Mesh Baffles**

Applications: **Ceilings**

1300 306 399

info@baresque.com.au

[baresque.com.au](http://baresque.com.au)

1 of 11

# MESH BAFFLES HERRINGBONE

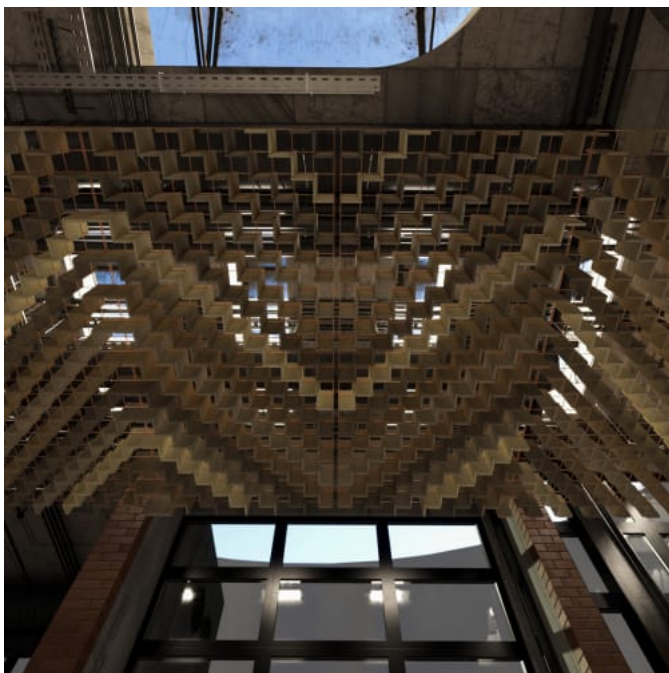
Acoustics » Acoustic Baffles



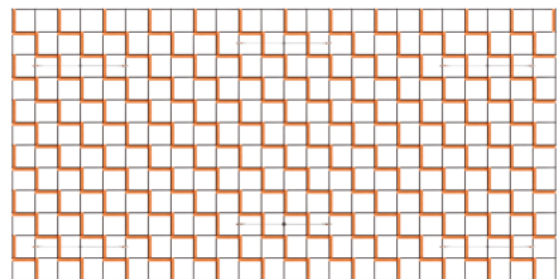
Mesh Baffles Herringbone Hospitality



Mesh Baffles Herringbone Detail



Mesh Baffles Herringbone Bottom View

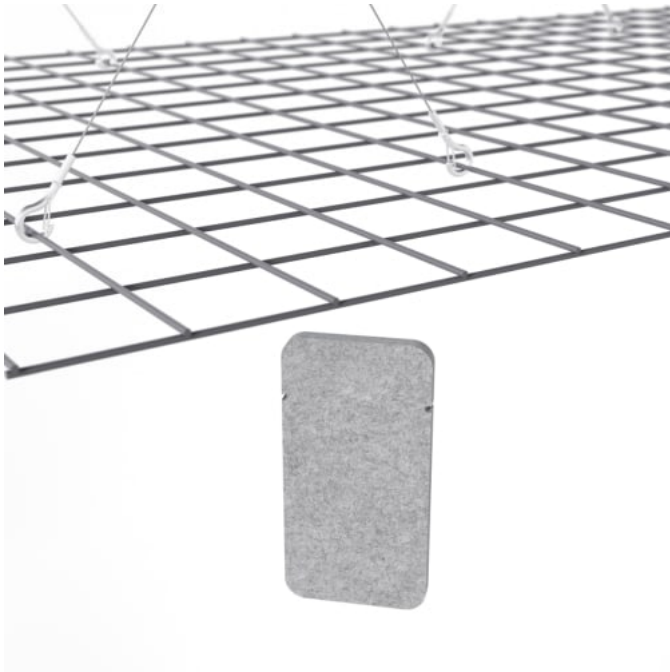


Mesh Baffle Herringbone Configuration

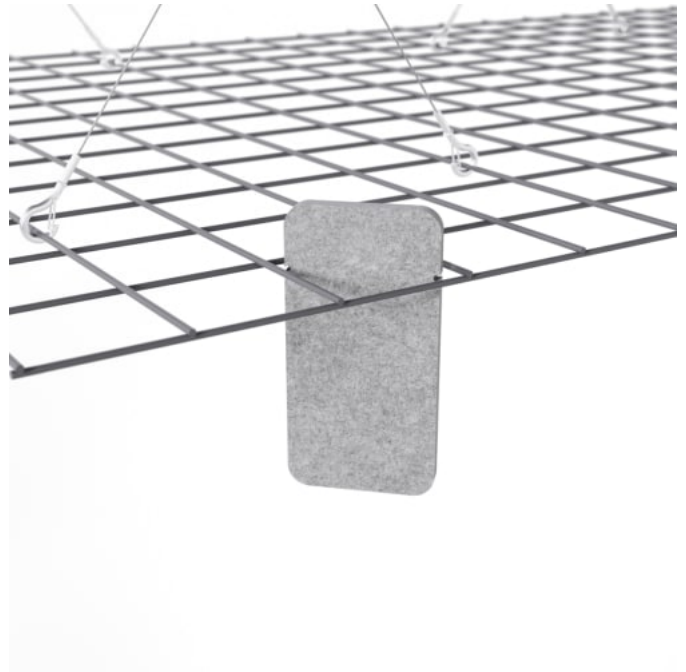


# MESH BAFFLES HERRINGBONE

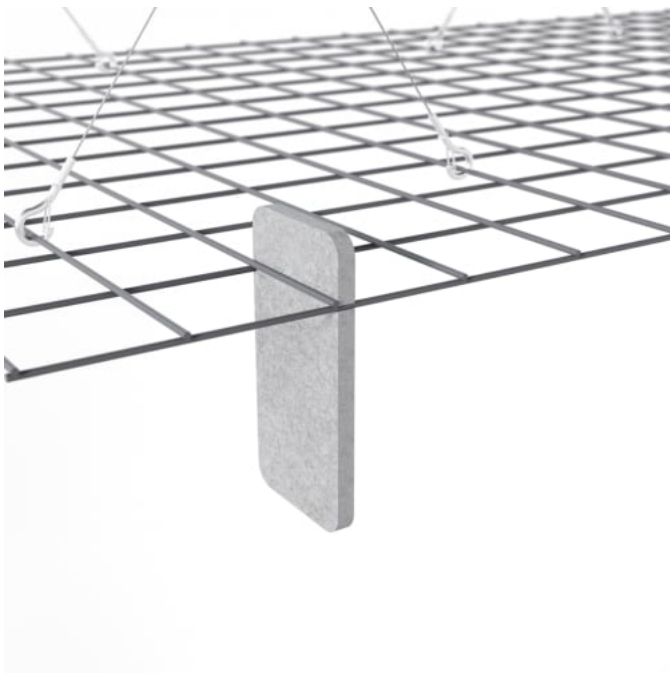
Acoustics » Acoustic Baffles



Mesh Baffle Detail



Mesh Baffle Detail Quill



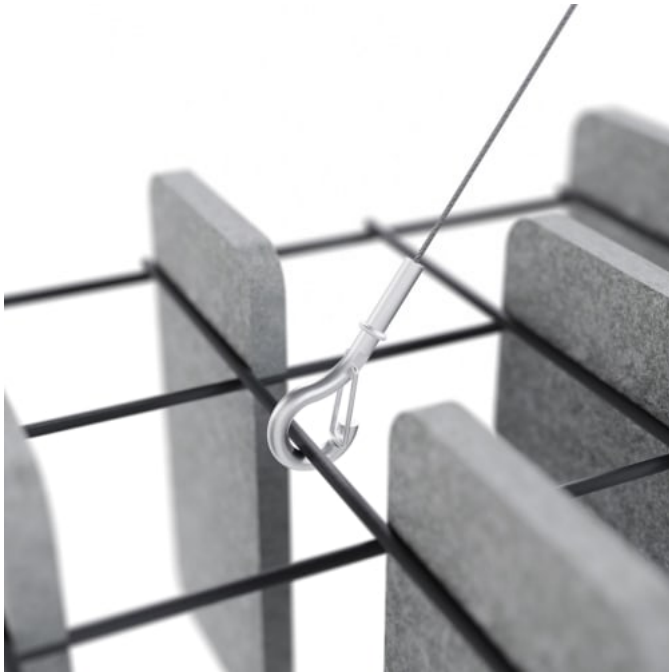
Mesh Baffle Quill Insert



Mesh Baffles Detail Install

# MESH BAFFLES HERRINGBONE

Acoustics » Acoustic Baffles



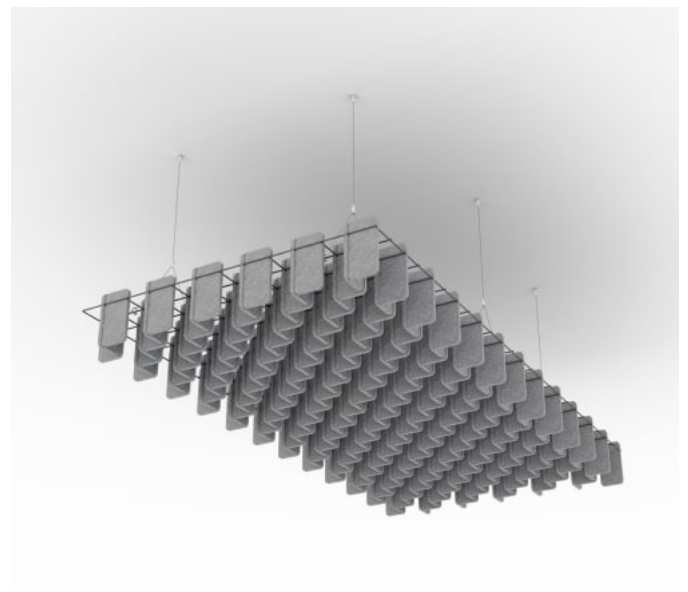
Mesh Baffle Hanger



Mesh Baffle Y-Hanger



Mesh Baffle Ceiling Anchor



Mesh Baffles Herringbone Perspective

# MESH BAFFLES HERRINGBONE

Acoustics » Acoustic Baffles

A perfect balance of acoustics and aesthetics. Zintra Mesh Baffle systems feature Zintra acoustic quills hung from a suspended powder coated mesh. Zintra Mesh Baffles Herringbone is a nod to the timeless classic, the Herringbone motif.

- ✓ **Cost Effective**
- ✓ **Acoustic**
- ✓ **Easy Install**
- ✓ **Bleach Cleanable**
- ✓ **Easy Clean**

## Description

### Mesh Baffles - Herringbone - 288 Quills

Using a unique interconnecting system Zintra Mesh Baffles seamlessly combine style and functionality, providing scalability and cost-effectiveness for wall-to-wall solutions or dynamic focal points.

Made from Zintra, the interchangeable, acoustically tuned 8" (209mm) quills hang from the mesh. Their lightweight materials, clever mounting system and simple mesh connectors make them easy to cut, effortless to hang and simple to configure. Wrap effortlessly around columns, with the ability to be customized on-site for hassle-free installation.

Designs that morph with a change in light or perspective, you can achieve multi-directional sound coverage and captivating visuals through contrasting or complementary mesh colours (choose from 12 powder coat colours).

The Mesh Baffles hang from the ceiling using Y-Hook Cables, which efficiently distribute weight across the interconnected mesh, and minimise ceiling anchor points. These tactile marvels offer multi-directional coverage, enveloping sound from all angles and achieving an NRC values up to 1.0.

Sold as a system, you can choose from 6 preconfigured patterns. Each system includes 1 x Powder Coated Mesh, 6 x Y-Hook Cable Hangers, 5 x Wire Rope Clamps and enough quills for your selected design.

6 Preconfigured patterns. Modular in design. Easy to connect. Scalable. Easy install.

Checked: 156 Quills | Herringbone: 288 Quills | Long Offset: 156 Quills | Offset: 288 Quills | Random: 219 Quills | Short Offset: 150 Quills

## Composition

1/2" (12mm)

Density 0.5 lb/ft<sup>2</sup> 2.4 kg /m<sup>2</sup>

## Sustainability

Zintra is made from 100% recyclable materials.

- 60% post-consumer recycled content from PET bottles.
- 35% pre-consumer recycled content from PET chips
- 5% polylactic acid (PLA)

# MESH BAFFLES HERRINGBONE

Acoustics » Acoustic Baffles

---

**Material** Zintra Acoustic Panel - 100% Solution Dyed (Color Through) Polyester

---

**Dimensions** **Individual Quill** (baffle) 4" (106mm) w x 8.2" (209mm) h x 0.5" (12mm) d

**The Americas:**

48" (1219mm) w x 8.2" (209mm) h x 96" (2438mm) l

MESH ONLY:

48" (1219mm) w x 0.4" (10mm) h x 96" (2438mm) l

**Australia/Asia:**

1200mm w x 209mm h x 2400mm l

MESH ONLY:

1200mm w x 10mm h x 2400mm l

---

**Weight** 54lb | 24.5kg  
per system

---

**Fire Rating** ASTM-E84 – Class A classification  
AS ISO 9705 – 2003 – Group 1 classification  
EN-13501 – B-s2-d0 classification

---

**Supplied As** Mesh Baffles is a System:

- 1 x Powder Coated Mesh 1219mm (48") w x 2438mm (96") l OR
- 1 x Powder Coated Mesh 1200mm w x 2400mm l
- 6 x Y-Hook Cable Hangers
- Standard length 1520mm (5')
- 5 Wire Rope Clamps
- Enough quills to suit selected pattern

---

**Inclusions** 6 x Y-Hook Cable Hangers | Standard length 5' (1520mm)  
5 Wire Rope Clamps  
288 x Quills

---

# MESH BAFFLES HERRINGBONE

Acoustics » Acoustic Baffles

---

## Assembly & Delivery

Ships Flat Packed.

Assemble your Baffle System then suspend from the ceiling using hanging hardware supplied.

Recommended 2 People assembly

Go to the Technical Documents and download the Installation Guide for more details.

---

## Suggested Installation

Go to Technical Documents and download the Installation Guide for more details.

---

## Fixing Detail

Y-Hook | Cable Hangers | Wire Rope Clamps

---

## Care Instructions

Vacuum to remove dust.

Dab Zintra with a damp clean cloth and mild solution of liquid detergent and warm water. Repeat using only clean water, then pat dry with a lint free cloth.

For difficult stains, use a solution of household bleach (10% bleach / 90% water). To remove the bleach, repeat using a clean, water dampened cloth, then pat dry.

Always test in an inconspicuous area first and if you don't see the expected results, contact us.

---

## Warranty

Visit FAQ for more details.

---

## Customisable

The Zintra Acoustic Solutions range is customisable to your project. Please get in touch with your local contact for details.

---

## Additional Comments

NRC 0.70 - 1.0

---

## How to Specify

1. Select Pattern

2. Select Zintra colour

3. Select Mesh Powder Coat colour

4. Repeat Steps 1-3 per System

1 x Zintra colour + 1 x Powder coat colour selection per system.

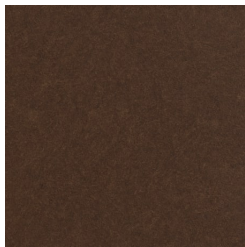
---

# MESH BAFFLES HERRINGBONE

Acoustics » Acoustic Baffles

## Colour & Finish Options

Zintra 12mm Solid PET



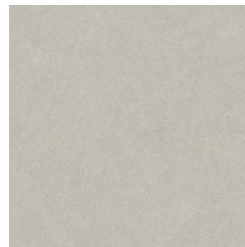
Bark



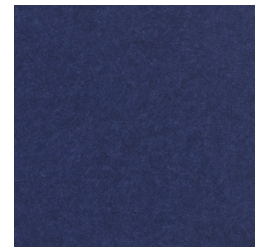
Brick



Cadet



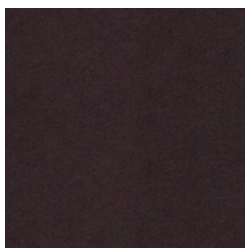
Chambray



Cobalt



Ecru



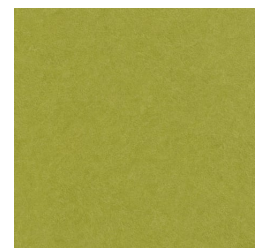
Elderberry



Fossil



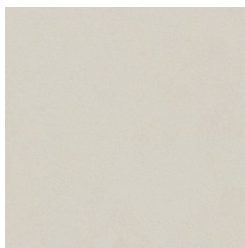
Frost



Grass



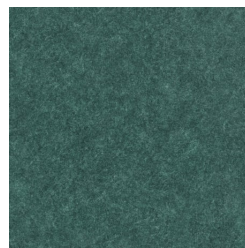
Greige



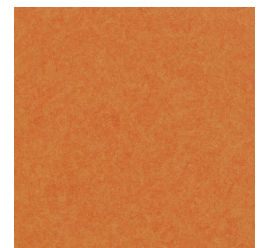
Ivory



Linen



Malachite



Mandarin



Meadow



Midnight



Ochre



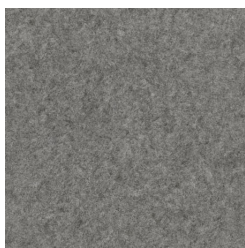
Olive



Parchment



Pebble



Pewter



Saffron



Sky



Smoke



# MESH BAFFLES HERRINGBONE

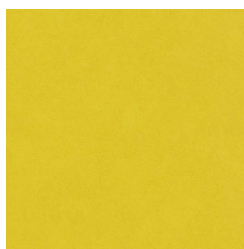
Acoustics » Acoustic Baffles



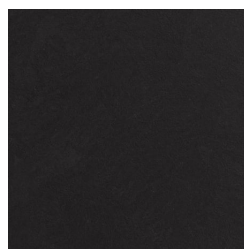
Slate



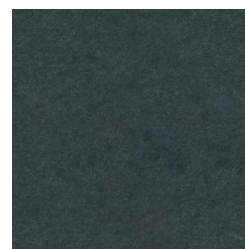
Storm



Sunshine



Tar

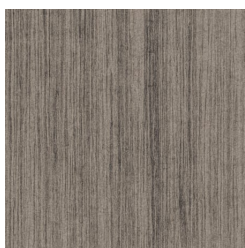


Twilight

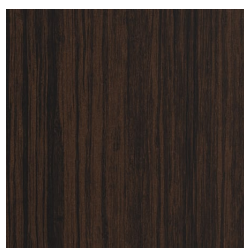
## Zintra Timber Print



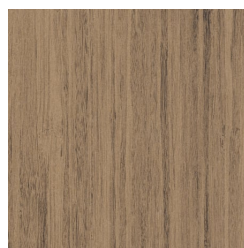
Eucalyptus



Ironbark



Merbau

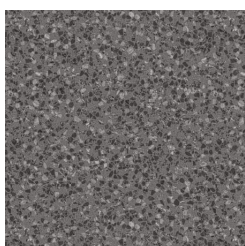


Spotted Gum

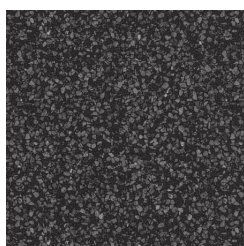
## Zintra Premium Material



Terrazzo Light



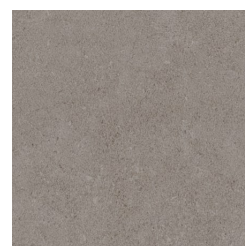
Terrazzo Medium



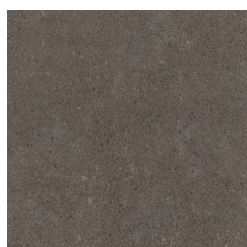
Terrazzo Dark



Travertine Light



Travertine Medium



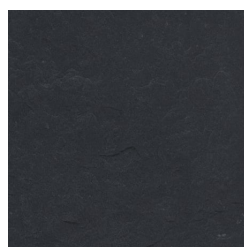
Travertine Dark



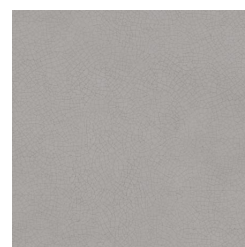
Shale Light



Shale Medium



Shale Dark



Raku Bone



Raku Luster



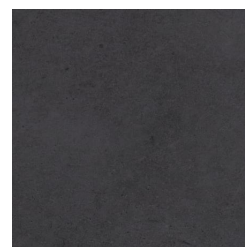
Raku Jade



Concrete Cast



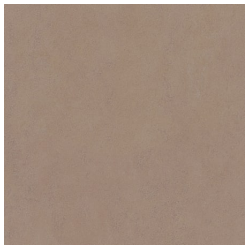
Concrete Polished



Concrete Dark Tint

# MESH BAFFLES HERRINGBONE

Acoustics » Acoustic Baffles



Terracotta Sun  
Bleached



Terracotta Mission



Terracotta Antique

## Zintra Premium Wood



Knotty Pine



Maple



Poplar



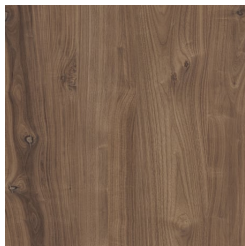
Australian Walnut



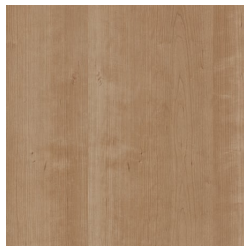
Claro Walnut



Palm Wood



Rustic Walnut



Cherry



Euro Beech



Lacewood

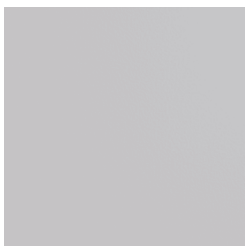


Redwood

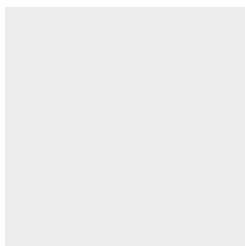


White Oak

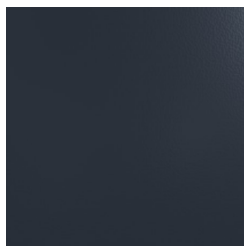
## Powdercoat



Anodised Silver



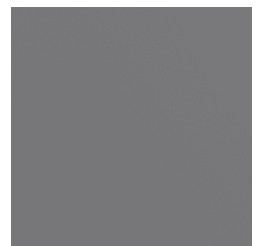
Bengal White



Denim



Fern

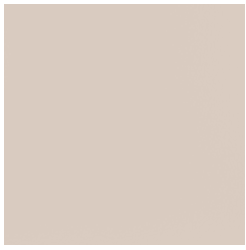


Gunmetal

# MESH BAFFLES HERRINGBONE

Acoustics » Acoustic Baffles

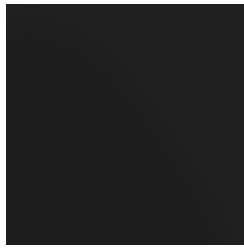
---



Light Grey



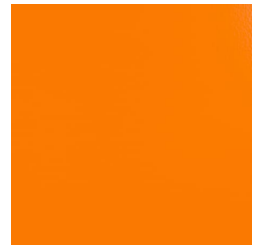
Marigold



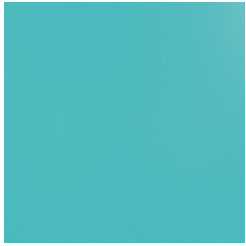
Matte Black



Spice



Tango



Teal



Terracotta