

TRITON

Fabrics » Woven Fabrics



Brand: **Crypton**

Applications: **Upholstery**

1300 306 399

info@baresque.com.au

baresque.com.au

1 of 5

TRITON

Fabrics » Woven Fabrics



TRITON

Fabrics » Woven Fabrics

Triton is a crypton fabric with a plaid pattern that's available in 14 colourways.

✓ **Bleach Cleanable**

✓ **Seaqual Yarn**

Description	A small-scale plaid big on impact, Triton's strong angles are softened by a full-face chenille surface. Triton is available in thirteen shades including crisp blues, tropical greens, and beachy neutrals.
Composition	76% Polyester 24% Seaqual
Environmental Info	<p>Greenguard Certifications contributes towards LEED credits for low-emitting furniture and ensures compliance with Business and Institutional Furniture Manufacturers Association (BIFMA) X7.1 standard and BIFMA e3 credit 7.6.1.</p> <p>Greenguard Gold Certification standard includes:</p> <ul style="list-style-type: none">* Health-based criteria for additional chemicals and requires lower total VOC emissions levels to help ensure that products are acceptable for use in environments like schools and healthcare facilities.* Products that also comply with requirements of the state of California's Department of Public Health (CDPH) "Standard Method for the Test and Evaluation of Volatile Organic Chemical Emissions from Indoor Sources Using Environmental Chambers, Version 1.2 (2017)" (also know as California Section 01350).* Products that are compliant with the BIFMA X7.1 standard and BIFMA e3 credits 7.6.1, 7.6.2, and 7.6.3.
Finishes	Crypton
Pattern Repeat Size	6.19 cm H 2.54 cm V
Roll Size	137cm wide X 55m - Available by the lineal metre
Weight	610.3 g/m2
Abrasion	63,000 double rubs (ASTM)
Fire Rating	This product can be treated with a fire retardant that will ensure it meets Australian Standard 1530.3. Contact Baresque for details.

TRITON

Fabrics » Woven Fabrics

Lead Time

- 2-weeks (approx.) from Wednesday, subject to stock availability.
 - Additional 1-week for Western Australia.
 - Express delivery is available subject to a surcharge. Contact Baresque for details and pricing.
-

Care Instructions

Mix 5 parts water with 1 part of an enzyme laundry detergent to have a mixture that works well on all stains.

Most liquid spills simply blot off the surface with a dry towel. If a stain remains, follow these simple steps:

1. Remove excess soil, and apply the soap mixture on the stained area
2. Allow solution to remain on stain for 1 minute
3. Blot up the stain with a dry, clean towel, rinse any remaining soap and blot the area again

Repeat these steps if a spot still remains. If agitation is necessary, spray the stained area and work the stain using a soft brush or edge of spoon from outside of spot toward the middle. Blot and rinse to remove any soap.

Warranty

2-year warranty. Visit baresque.com.au/warranty for complete details.

Additional Comments

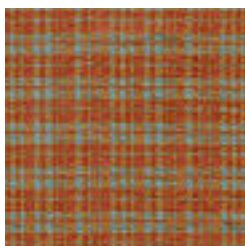
SEAQUAL® YARN was created through a partnership with the SEAQUAL INITIATIVE, by using Upcycled Marine Plastic and 100% recycled polyester from land sources.

This unique SEAQUAL® YARN is woven into Burch patterns Calypso, Neptune, and Triton.

Colour & Finish Options



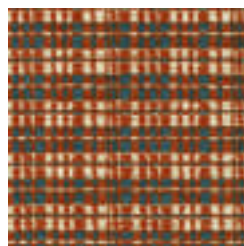
COLOURWAY CARD



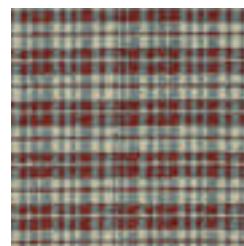
1011598 Koi



1011599 Wharf



1011600 Cabana



1011601 Heron



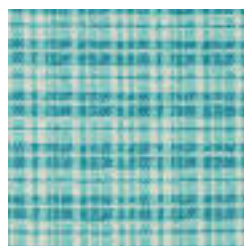
1011602 Depth



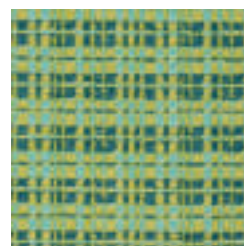
1011603 Admiral



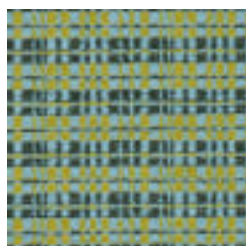
1011604 Riptide



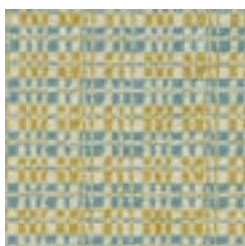
1011605 Aruba



1011606 Nori



1011607 Oasis



1011608 Lighthouse



1011609 Dune



1011610 Breakwall



1011611 Boardwalk