

BLOOM ELEMENTAL

Fabrics » Vinyl and Faux Leather Fabrics



Brand: **Concertex**

Collections: **Elemental**

Applications: **Upholstery**

1300 306 399

info@baresque.com.au

baresque.com.au

1 of 5

BLOOM ELEMENTAL

Fabrics » Vinyl and Faux Leather Fabrics



BLOOM ELEMENTAL

Fabrics » Vinyl and Faux Leather Fabrics

Bloom is a 137cm wide silicone upholstery with a pattern inspired by blooming of the flowers. Available in 8 colourways.

- | | | |
|---------------------------|---------------------------|---------------------------|
| ✓ PVC-Free | ✓ Phthalate Free | ✓ Anti-Microbial |
| ✓ Anti-Bacterial | ✓ Silicone Hybrid | ✓ Moisture Barrier |
| ✓ High Performance | ✓ Bleach Cleanable | ✓ Breathable |

Description	To bloom is a beautiful process of becoming. It is a constant and miraculous reminder of our wonderful potential. Where flowers and life bloom, so does hope. This soft and light fabric was designed to find beauty in the everyday. Covered in hand-drawn flowers, it is a comforting touchpoint that is as hopeful as it is whimsical. This fabric will surface the idea of bloom in a wide variety of settings from soothing healthcare to hospitality environments.
--------------------	--

Composition	Face - 100% Silicone, Inherently Graffiti-Free Middle - 100% Polyurethane Backing - 100% Polyester
--------------------	--

Environmental Info	PVC free Phthalate Free DMF Free No added fire retardant Anti-Bacterial Healthier Hospitals compliant Complies with CAL01351
---------------------------	--

Pattern Repeat Size	69cm H x 61cm V 27" H X 24" V
----------------------------	-------------------------------

Roll Size	137cm x Approx 45m - Available by the lineal metre
------------------	--

Abrasion	200,000 + Double Rubs
-----------------	-----------------------

Fire Rating	Tested in accordance with AS1530.3 Spread of Flame Index - 0 Smoke Developed Index - 5
--------------------	--

BLOOM ELEMENTAL

Fabrics » Vinyl and Faux Leather Fabrics

Lead Time	<ul style="list-style-type: none">• 2-weeks (approx.) from Wednesday, subject to stock availability.• Additional 1-week for Western Australia.• Express delivery is available subject to a surcharge. Contact Baresque for details and pricing.
Care Instructions	<p>Wipe material with a clean, soft cloth dampened with a mild solution of liquid detergent and warm water. Repeat using only clean water, then dry with a lint free cloth.</p> <p>Avoid using wax polishes, solvents or concentrated abrasives. For more difficult stains, dampen a soft white cloth with a solution of household bleach (10% bleach / 90% water). Rub gently. Rinse with a water dampened cloth to remove bleach concentration.</p> <p>Always test in an inconspicuous area first.</p>
Warranty	2-year warranty. Visit baresque.com.au/warranty for complete details.

BLOOM ELEMENTAL

Fabrics » Vinyl and Faux Leather Fabrics

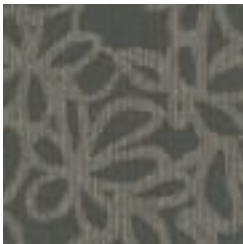
Colour & Finish Options

COLOURWAY
CARD

COLOURWAY CARD



ANEMONE



DOVETAIL



EARL GREY



EUCALYPTUS



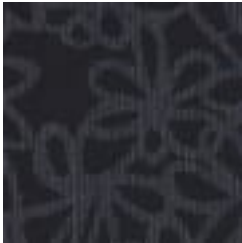
HIBISCUS



LAVENDER



MAGNOLIA



WINDFLOWER