

# RAFFIA BURCH

Fabrics » Woven Fabrics



Brand: **Crypton**

Applications: **Upholstery**

1300 306 399

[info@baresque.com.au](mailto:info@baresque.com.au)

[baresque.com.au](http://baresque.com.au)

1 of 5

# RAFFIA BURCH

Fabrics » Woven Fabrics



# RAFFIA BURCH

Fabrics » Woven Fabrics

Raffia is a 137cm wide crypton fabric that's bleach cleanable and greenguard gold certified. Available in 15 colourways.

✓ **Bleach Cleanable**

✓ **Greenguard Gold Certified**

**Description** Celebrating traditional craftsmanship through modern technique, Raffia expresses the natural essence of its namesake through subtle striations and tonal duality. Unexpected pops of color create opportunities for seamless coordination throughout a space.

**Composition** 93% Polyester  
7% Cotton

**Environmental Info** Greenguard Certifications contributes towards LEED credits for low-emitting furniture and ensures compliance with Business and Institutional Furniture Manufacturers Association (BIFMA) X7.1 standard and BIFMA e3 credit 7.6.1.

Greenguard Gold Certification standard includes:

- \* Health-based criteria for additional chemicals and requires lower total VOC emissions levels to help ensure that products are acceptable for use in environments like schools and healthcare facilities.
- \* Products that also comply with requirements of the state of California's Department of Public Health (CDPH) "Standard Method for the Test and Evaluation of Volatile Organic Chemical Emissions from Indoor Sources Using Environmental Chambers, Version 1.2 (2017)" (also known as California Section 01350).
- \* Products that are compliant with the BIFMA X7.1 standard and BIFMA e3 credits 7.6.1, 7.6.2, and 7.6.3.

**Pattern Repeat Size** 56.4cm H x 17cm V 22.22 " H x 6.75" V

**Roll Size** 137cm x Approx 55m - Available by the lineal metre

**Abrasion** 50,000 Double Rubs

**Fire Rating** Tested in accordance with AS1530.3  
Spread of Flame Index - 0  
Smoke Developed Index - 5

# RAFFIA BURCH

Fabrics » Woven Fabrics

---

## Lead Time

- 2-weeks (approx.) from Wednesday, subject to stock availability.
  - Additional 1-week for Western Australia.
  - Express delivery is available subject to a surcharge. Contact Baresque for details and pricing.
- 

## Care Instructions

Always use a clean, white, soft cloth.

Prepare a mixture of 1/3 Napisan and 2/3 Fab. Combine the mixture with water to make a paste about the consistency of soft margarine i.e. not too runny. Apply using a soft bristle brush. Leave for 10 minutes.

Use a brush and clean, warm water to remove the paste being sure to renew the water so that it remains clean.

Never use stiff bristles or wire brushes, as they may damage the fabric. To prevent soil build-up, frequent vacuuming is recommended.

Using a cloth to pat dry will help eliminate watermarks.

For more difficult stains, dampen a soft white cloth with a solution of household bleach (10% bleach / 90% water). Rub gently. Rinse with a water dampened cloth to remove bleach concentration.

Always test in an inconspicuous area first. If care instructions don't deliver the expected results, cease cleaning method immediately and contact Baresque for assistance.

---

## Warranty

2-year warranty. Visit [baresque.com.au/warranty](https://www.baresque.com.au/warranty) for complete details.

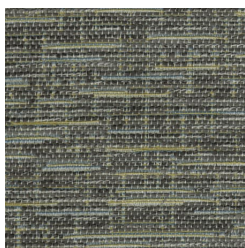
---



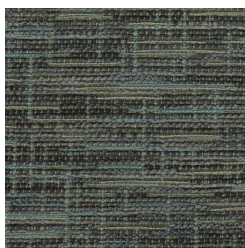
# RAFFIA BURCH

Fabrics » Woven Fabrics

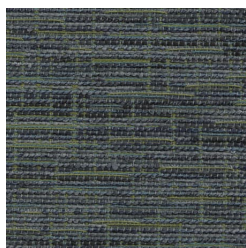
## Colour & Finish Options



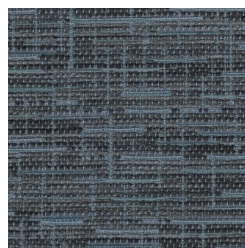
Raffia-1011345-  
Seaglass



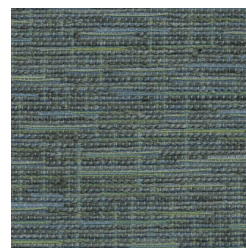
Raffia-1011346-  
Bluestone



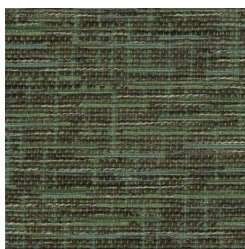
Raffia-1011347-  
Aquamarine



Raffia-1011348-Cobalt



Raffia-1011349-Tropic



Raffia-1011350-  
Mermaid



Raffia-1011351-  
Sagebrush



Raffia-1011352-Aloe



Raffia-1011353-  
Buttermilk



Raffia-1011354-Biscotti



Raffia-1011355-Honey-  
Wheat



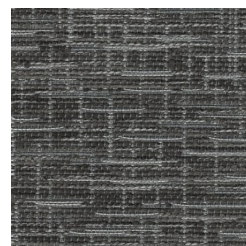
Raffia-1011356-Amber-  
Glow



Raffia-1011357-Burnt-  
Sienna



Raffia-1011358-Sepia



Raffia-1011359-  
Greyscale