

# PALMETTO

Fabrics » Woven Fabrics



Brand: **Burch**

Applications: **Upholstery**

1300 306 399

[info@baresque.com.au](mailto:info@baresque.com.au)

[baresque.com.au](http://baresque.com.au)

1 of 5

# PALMETTO

**Fabrics** » Woven Fabrics

---



# PALMETTO

Fabrics » Woven Fabrics

Palmetto is a crypton fabric with a naturalistic pattern that's available in 7 colourways

✓ **Bleach Cleanable**

✓ **Greenguard Gold Certified**

Description	Imagine a whimsical leaf rustling in the cool breeze. Jungle greens and tropical blues round out Palmetto's palette of seven wildly creative color combinations.
Composition	76% Polyreser 16% Polyester UV 8% Post Consumer Recycled Polyester
Environmental Info	<p>Greenguard Certifications contributes towards LEED credits for low-emitting furniture and ensures compliance with Business and Institutional Furniture Manufacturers Association (BIFMA) X7.1 standard and BIFMA e3 credit 7.6.1.</p> <p>Greenguard Gold Certification standard includes:</p> <p>* Health-based criteria for additional chemicals and requires lower total VOC emissions levels to help ensure that products are acceptable for use in environments like schools and healthcare facilities.</p> <p>* Products that also comply with requirements of the state of California's Department of Public Health (CDPH) "Standard Method for the Test and Evaluation of Volatile Organic Chemical Emissions from Indoor Sources Using Environmental Chambers, Version 1.2 (2017)" (also know as California Section 01350).</p> <p>* Products that are compliant with the BIFMA X7.1 standard and BIFMA e3 credits 7.6.1, 7.6.2, and 7.6.3.</p>
Pattern Repeat Size	34cm H x 38cm V 13.7cm H x 15cm V
Roll Size	137cm x Approx 55m - Available by the lineal metre
Abrasion	78,000 Double Rubs
Fire Rating	Tested in accordance with AS1530.3 Spread of Flame Index - 0 Smoke Developed Index - 5

# PALMETTO

Fabrics » Woven Fabrics

---

## Lead Time

- 2-weeks (approx.) from Wednesday, subject to stock availability.
  - Additional 1-week for Western Australia.
  - Express delivery is available subject to a surcharge. Contact Baresque for details and pricing.
- 

## Care Instructions

Always use a clean, white, soft cloth.

Prepare a mixture of 1/3 Napisan and 2/3 Fab. Combine the mixture with water to make a paste about the consistency of soft margarine i.e. not too runny. Apply using a soft bristle brush. Leave for 10 minutes.

Use a brush and clean, warm water to remove the paste being sure to renew the water so that it remains clean.

Never use stiff bristles or wire brushes, as they may damage the fabric. To prevent soil build-up, frequent vacuuming is recommended.

Using a cloth to pat dry will help eliminate watermarks.

For more difficult stains, dampen a soft white cloth with a solution of household bleach (10% bleach / 90% water). Rub gently. Rinse with a water dampened cloth to remove bleach concentration.

Always test in an inconspicuous area first. If care instructions don't deliver the expected results, cease cleaning method immediately and contact Baresque for assistance.

---

## Warranty

2-year warranty. Visit [baresque.com.au/warranty](https://baresque.com.au/warranty) for complete details.

---

# PALMETTO

Fabrics » Woven Fabrics

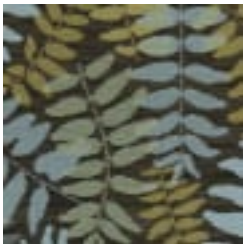
## Colour & Finish Options



COLOURWAY CARD



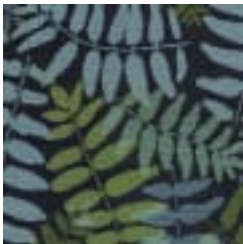
Palmetto-1011499-  
Rainforest



Palmetto-1011500-  
Wicker



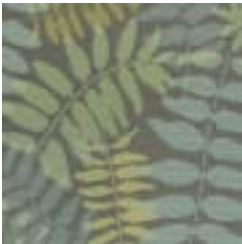
Palmetto-1011501-  
Papaya



Palmetto-1011502-  
Waterfall



Palmetto-1011503-  
Tidepool



Palmetto-1011504-  
Tranquilty



Palmetto-1011505-  
Coconut