

RESORT RAFFIA

Wallcoverings » Commercial Wallcoverings



Brand: **Symphony**

Applications: **Walls**

1300 306 399

info@baresque.com.au

baresque.com.au

1 of 4

RESORT RAFFIA

Wallcoverings » Commercial Wallcoverings

Resort Raffia is a Type II wallcovering with a realistic woven look available in 16 neutral colourways.

✓ Low VOC

✓ Bleach Cleanable

✓ Coordinate available

✓ Anti-Microbial

Description

Resort Raffia transcends fads delivering the timeless appeal of natural wovens. This beautifully balanced pattern shows off its penchant for breathing calm energy into any space. Suitably coloured in casted shades of weathered grass fibers, Resort Raffia may be the essence of relaxation. Well rested and looking for a more dramatic flair, add a touch of glam with metallic offerings such as Graphite and Cattail.

Sustainability

- Low VOC
- 10% Recycled content
- Non-Phthalate
- EPD / HPD

It is the policy of J. Josephson, Inc. to ensure that the activities, products, and services carried out here will be appropriate toward meet-and-exceed compliance with relevant environmental legislation and regulations and other requirements to which it subscribes.

We recognize the interrelationship of productive efficiency with environmental impact. Therefore, while our commitment to the customer is still a top priority, we will also work toward continuous improvement and pollution prevention. To achieve this, we will also set and review environmental objectives and targets within the framework of a documented, implemented and effectively communicated program.

Roll Size

137cm wide x 27.4m - Available by the lineal metre

Fire Rating

Tested in accordance with AS ISO 9705 2003 for the purpose of determining the Group Number classification as required by the Building Code of Australia for the control of fire spread on interior wall and ceiling linings.

The result achieved was:
Classification - Group 2
Specific Extinction - Less than 250m²/kg

Lead Time

- 2-weeks (approx.) from Wednesday, subject to stock availability.
- Additional 1-week for Western Australia.
- Express delivery is available subject to a surcharge. Contact Baresque for details and pricing.

RESORT RAFFIA

Wallcoverings » Commercial Wallcoverings

Suggested Installation

Non reverse hang/overlap double cut.

Baresque recommends and supplies Roman brand adhesives and primers.

Care Instructions

Always use a clean, white, soft cloth.

Use cloth with any of the following in preferred order of us:

1: Clear warm water

2: Mild solution of liquid detergent and warm water

3: Isopropyl Alcohol (a.k.a. rubbing alcohol)

4: Do not use solvent based cleaning agents, lacquer thinners, nail polish remover, pine oil or cleaning agents containing bleach, which may cause discoloration over a period of time.

5: It is recommended that cleaning be done with a natural sponge. A cloth or towel should only be used to tamp dry (not rub). Do not use manmade (i.e. polyester) sponges.

Warranty

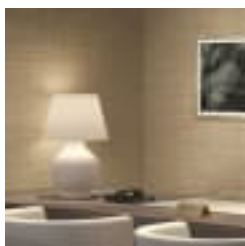
5-year warranty. Visit baresque.com.au/warranty for complete details.

RESORT RAFFIA

Wallcoverings » Commercial Wallcoverings

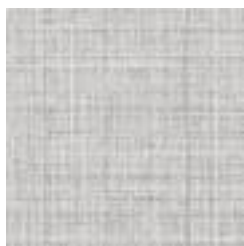
Colour & Finish Options

COLOURWAY CARD



COLOURWAY CARD

AZ53715 WHITE
WILLOW



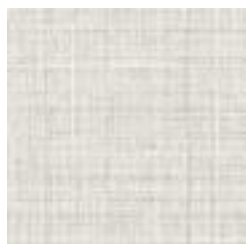
AZ53716 OYSTER



AZ53717 SPARROW



AZ53718 GRAPHITE



AZ53719 COCONUT



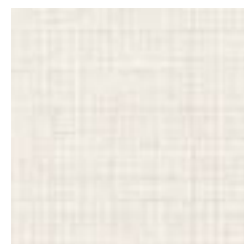
AZ53720 BARLEY



AZ53721 WOVEN
WHEAT



AZ53722 SAND DUNE



AZ53723 LINEN



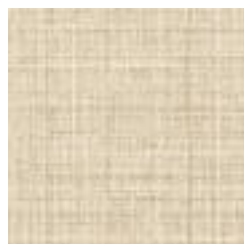
AZ53724 OATS



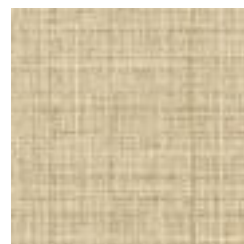
AZ53725 MARSH



AZ53726 OLIVE



AZ53727
HONEYSUCKLE



AZ53728 NATURAL



AZ53729 JUTE



AZ53730 CATTAIL