

# LUCERE MIRROR

Acrylics, Resin & Laminates » Acrylics/Resin



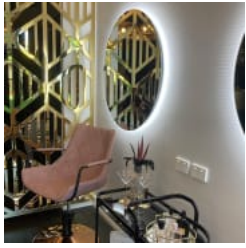
Brand: **Lucere**

Applications: **Cladding**

# LUCERE MIRROR

Acrylics, Resin & Laminates » Acrylics/Resin

---



# LUCERE MIRROR

Acrylics, Resin & Laminates » Acrylics/Resin

Sophistication and timelessness of mirror with the ease and cost effectiveness of acrylic.

## ✓ Cost Effective

Description	<p>FEATURES</p> <ul style="list-style-type: none"><li>* Cost effective</li><li>* Utilise in plain, Engrave, cladding and screens</li><li>* Fabricate with standard wood-working tools</li></ul>
Composition	Mirror resin. When using Lucere Mirror as a plain sheet, there will be an inherent and unavoidable oil-canning apparent in the surface.
Environmental Info	Easily recycled. Contact your nearest Baresque branch for details.
Finishes	Mirror
Dimensions	<p>Sheet Size</p> <p>Plain Mirror - 2440mm x 1220mm</p> <p>Mirror on Ply - 2400mm x 1200mm</p>
Fabrication Techniques	Standard wood-working tools. See Baresque Mirror Acrylic Handling, Fabrication and Installation Guide for more details.
Care Instructions	<p>Do not use glass cleaning products, acetone, gasoline, benzene, lacquer thinner, chlorinated solvents, gritty abrasive scouring compounds, or alkaline cleaners to clean Lucere as damage to the sheet will occur.</p> <p>Use warm water, mild detergent, and a soft sponge, cloth, or chamois to clean Lucere</p> <p>Surface contamination may be cleaned using kerosene, hexane, or aliphatic naphtha, or any acrylic cleaner, such as Novus.</p> <p>Always follow manufacturers recommended use and safety procedures</p> <p>Remove any oily residue left behind from solvent cleaning with detergent and water</p> <p>Do not use squeegee, scraper, or synthetic rags that may scratch.</p> <p>When cleaning, never scrub. Gently wipe surface with a soft scratch free cloth.</p> <p>Always test in an inconspicuous area first. If care instructions don't deliver the expected results, cease cleaning method immediately and contact Baresque for assistance.</p> <p>For refinishing, contact Baresque for details</p>

# LUCERE MIRROR

Acrylics, Resin & Laminates » Acrylics/Resin

Customisable	No
How to Specify	<div>1. Colour</div> <div>2. Size - Mirror only: available in Sheet Size 2440mm x 1220mm x 3mm</div> <div>Mirror on Ply: 3 sizes and single or double sided</div>

# LUCERE MIRROR

Acrylics, Resin & Laminates » Acrylics/Resin

---

## Colour & Finish Options



CARBON



MOLTEN



HAZE



MIST