

LIGHTBLOCKS BOARD COLOURS

Acrylics, Resin & Laminates » Acrylics/Resin



Brand: **Lightblocks**

Applications: **Cladding, Horizontal Surfaces, Tabletops, Walls**

1300 306 399

info@baresque.com.au

baresque.com.au

1 of 7

LIGHTBLOCKS BOARD COLOURS

Acrylics, Resin & Laminates » Acrylics/Resin



LIGHTBLOCKS BOARD COLOURS

Acrylics, Resin & Laminates » Acrylics/Resin



LIGHTBLOCKS BOARD COLOURS

Acrylics, Resin & Laminates » Acrylics/Resin

Lightblocks Board Colours will enrich your project in ways never imagined with a colourful kaleidoscope that covers all the hues of the rainbow.

- ✓ **Bleach Cleanable**
- ✓ **Soft touch**
- ✓ **Unique Depth**
- ✓ **Fully Refinishable**
- ✓ **Thermoformable**
- ✓ **Finger print proof**
- ✓ **Seamless Joins**

Description	Fully refinishable resin with soft touch available in a range of thicknesses FEATURES * Bleach cleanable * Fully refinishable * Finger print proof * Soft touch * Thermoformable * Seamless Joins * Unique Depth
Composition	Lightblocks resin.
Environmental Info	Easily recycled. Contact your nearest Baresque branch for details.
Finishes	Matt
Dimensions	Sheet Size 2440mm x 1220mm - 3mm, 6mm, 10mm, 15mm, 20mm, 30mm 3000mm x 1000mm - 3mm, 6mm, 10mm
Lead Time	<ul style="list-style-type: none">• 2-weeks (approx.) from Wednesday, subject to stock availability.• Additional 1-week for Western Australia.• Express delivery is available subject to a surcharge. Contact Baresque for details and pricing.
Fabrication Techniques	Standard wood-working tools. See Baresque Lightblocks Handling, Fabrication and Installation Guide for more details.

LIGHTBLOCKS BOARD COLOURS

Acrylics, Resin & Laminates » Acrylics/Resin

Care Instructions

Always use a clean, white, soft cloth. When cleaning, never scrub Lightblocks. Gently wipe the surface.

Use cloth with any of the following in preferred order of use:

* Clear warm water

* Mild solution of liquid detergent and warm water

* Kerosene, hexane, or aliphatic naphtha, or any acrylic cleaner, such as Novus. Always follow manufacturer's recommended use and safety procedures.

Remove any oily residue left behind from solvent cleaning with detergent and water.

For more difficult stains, dampen a soft white cloth with a solution of household bleach (10% bleach / 90% water). Rub gently. Rinse with a water dampened cloth to remove bleach concentration.

DO NOT USE glass cleaning products, acetone, gasoline, benzene, lacquer thinner, chlorinated solvents, gritty abrasive scouring compounds, or alkaline cleaners as damage to the sheet will occur.

DO NOT USE a squeegee, scraper, or synthetic rags that may scratch.

if there is only a light scratch, refinishing can be achieved by rubbing the area in a random circular motion with a fine steel scouring pad (Scotch-brite).

Test in an inconspicuous area before attempting a main area on the job.

Customisable

Yes (Colour backing only)

Additional Comments

Lightblocks Board not recommended for wet areas or close to fire sources.

How to Specify

1. Colour
 2. Sheet size
 3. Thickness
 4. Backing - Unbacked, 1mm clear PVC or Protective Paint
-

LIGHTBLOCKS BOARD COLOURS

Acrylics, Resin & Laminates » Acrylics/Resin

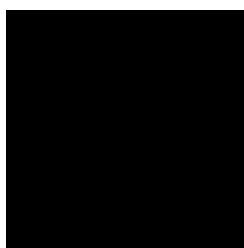
Colour & Finish Options



BALSA STONE



BIRDIE



BLACK



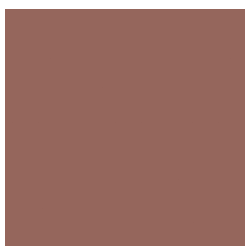
BLUE VEIL



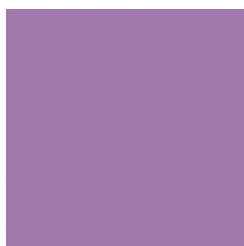
BUFF IT



CADET



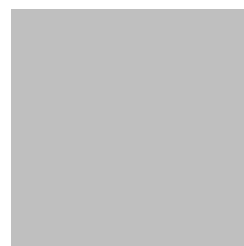
CHOCOLATE



DESIGN DELIGHT



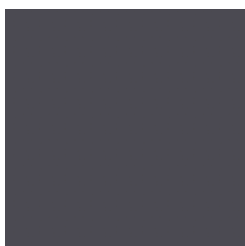
FOSSIL



GREIGE



HOT LIPS



LEADMAN



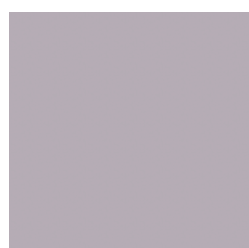
LEMON DELICIOUS



LICKEDY LICK



LIME



MADAME MAUVE



MALACHITE



MISTY MORNING



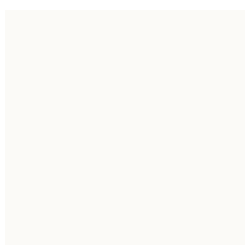
MOSS VALE



NEVERLAND



PORCELLAN



PURE WHITE



QUINCE JELLY



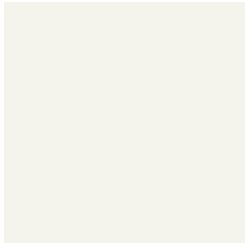
SIMPSON SURPRISE



SUMMER WATERS

LIGHTBLOCKS BOARD COLOURS

Acrylics, Resin & Laminates » Acrylics/Resin



VIVID WHITE



WATER RACEWAY