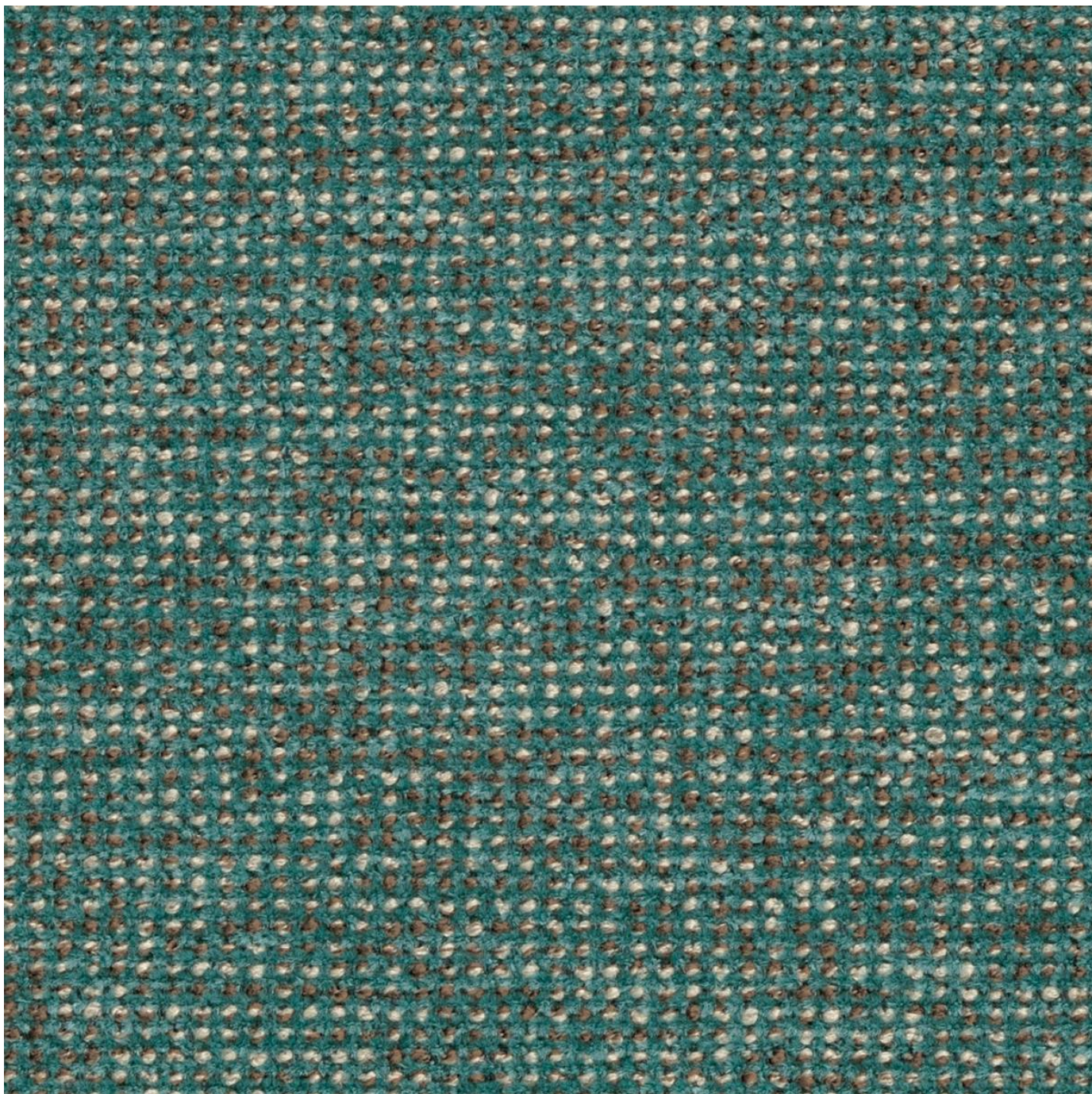


ANNEX

Fabrics » Woven Fabrics



Brand: **Crypton**

Applications: **Upholstery**

1300 306 399

info@baresque.com.au

baresque.com.au

1 of 4

ANNEX

Fabrics » Woven Fabrics

Annex is a 137cm wide woven upholstery that displays an intricate dot texture with a boucle twist. Available in 15 colours.

✓ **Bleach Cleanable**

✓ **Moisture Barrier**

Description Annex displays an intricate dot texture with a boucle twist, lending to a worn-in and homely look. CRYPTON is a permanent moisture, soil resistance and anti-microbial protection backing.

Composition CRYPTON - 100% polyester

Environmental Info Greenguard Certifications contributes towards LEED credits for low-emitting furniture and ensures compliance with Business and Institutional Furniture Manufacturers Association (BIFMA) X7.1 standard and BIFMA e3 credit 7.6.1.

Greenguard Gold Certification standard includes:

- * Health-based criteria for additional chemicals and requires lower total VOC emissions levels to help ensure that products are acceptable for use in environments like schools and healthcare facilities.
- * Products that also comply with requirements of the state of California's Department of Public Health (CDPH) "Standard Method for the Test and Evaluation of Volatile Organic Chemical Emissions from Indoor Sources Using Environmental Chambers, Version 1.2 (2017)" (also know as California Section 01350).
- * Products that are compliant with the BIFMA X7.1 standard and BIFMA e3 credits 7.6.1, 7.6.2, and 7.6.3.

Pattern Repeat Size N/A

Roll Size 137cm x Approx 45m - 55m - Available by the lineal metre

Abrasion 50,000 double rubs (Wyzenbeek)

Fire Rating Tested in accordance with AS1530.3

Spread of Flame Index - 0

Smoke Developed Index - 5

ANNEX

Fabrics » Woven Fabrics

Lead Time

- 2-weeks (approx.) from Wednesday, subject to stock availability.
 - Additional 1-week for Western Australia.
 - Express delivery is available subject to a surcharge. Contact Baresque for details and pricing.
-

Care Instructions

Always use a clean, white, soft cloth.

Prepare a mixture of 1/3 Napisan and 2/3 Fab. Combine the mixture with water to make a paste about the consistency of soft margarine i.e. not too runny. Apply using a soft bristle brush. Leave for 10 minutes.

Use a brush and clean, warm water to remove the paste being sure to renew the water so that it remains clean.

Never use stiff bristles or wire brushes, as they may damage the fabric. To prevent soil build-up, frequent vacuuming is recommended.

Using a cloth to pat dry will help eliminate watermarks.

For more difficult stains, dampen a soft white cloth with a solution of household bleach (10% bleach / 90% water). Rub gently. Rinse with a water dampened cloth to remove bleach concentration.

Always test in an inconspicuous area first. If care instructions don't deliver the expected results, cease cleaning method immediately and contact Baresque for assistance.

Warranty

2-year warranty. Visit baresque.com.au/warranty for complete details.

ANNEX

Fabrics » Woven Fabrics

Colour & Finish Options



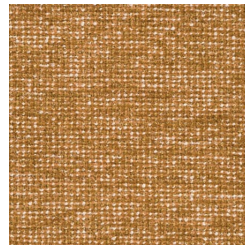
1009710 PICKLE



1009711 MOSS



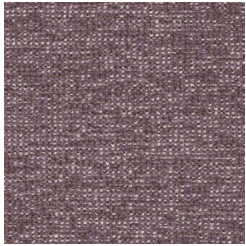
1009712 TORTILLA



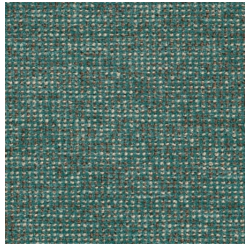
1009713 HONEY



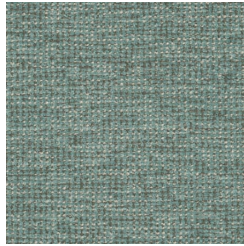
1009714 AMBER



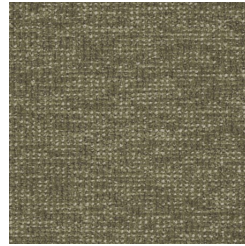
1009715 LILAC



1009716 CERULEAN



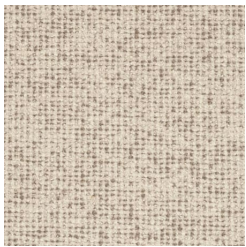
1009717 POND



1009718 SAGE



1009719 COIN



1009720 OYSTER



1009721 BONE



1009722 UMBER



1009723 MIDNIGHT



1009724 FOSSIL