

STRIE

Wallcoverings » Commercial Wallcoverings

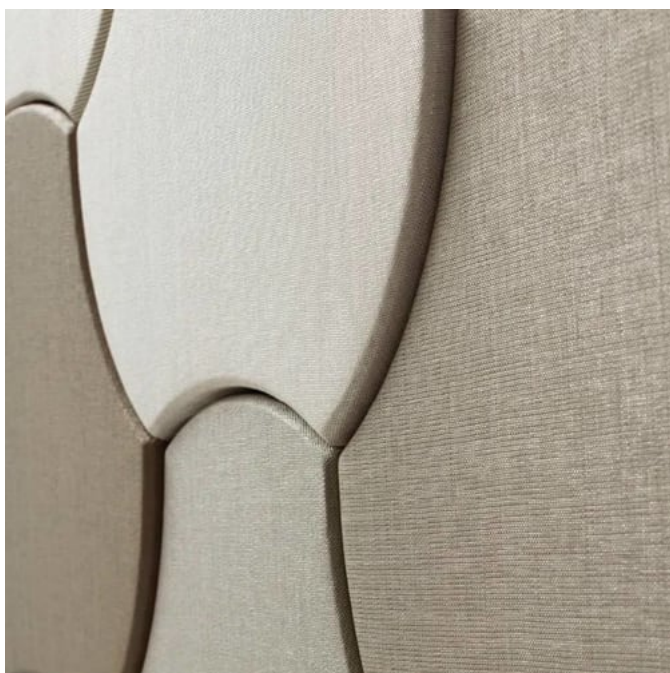
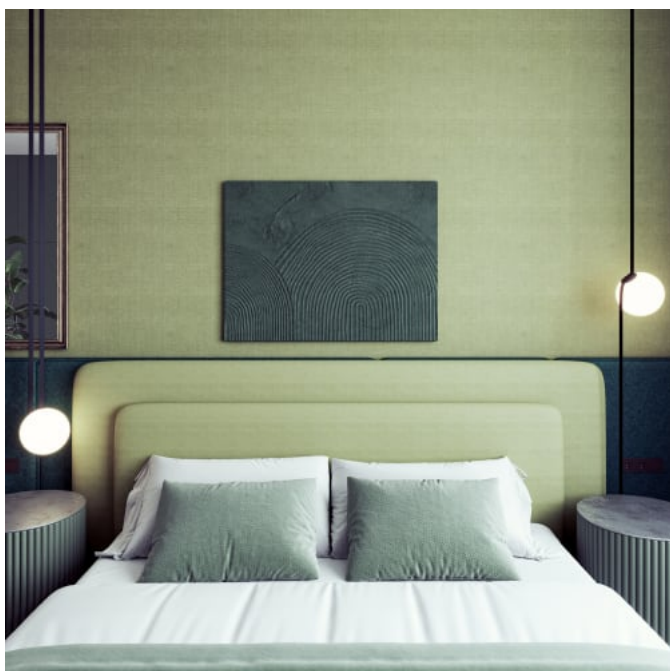


Brand: **Xorel**

Applications: **Walls, Upholstery, Panels**

STRIE

Wallcoverings » Commercial Wallcoverings



strie-promo-3.jpg

1300 306 399

info@baresque.com.au

baresque.com.au

2 of 10

STRIE

Wallcoverings » Commercial Wallcoverings

Strie's subtle texture adds a natural touch. Eco-friendly and tough, ideal for busy rooms. Introducing 19 new colourways.

✓ **Bleach Cleanable**

✓ **Stain Resistant**

✓ **Sustainable**

✓ **Cradle to Cradle Certified**

✓ **PVC-Free**

✓ **Anti-Bacterial**

✓ **Low VOC**

✓ **Living Product Certified**

✓ **Acoustic**

Description Strie has faint striations that bring an organic and flowing essence to this solid weave structure. This biobased pattern is extremely durable and perfect for any high traffic space.

Composition 100% Xorel (81% Biobases PE,15% PE)

Environmental Info Xorel's high performance does not come at an environmental cost as it achieves high standards for sustainability.

All testing/certifying is done by third party independent organizations including:- Scientific Certification Systems (SCS) – Indoor Air Quality (GOLD)- Vincotte – Biobased Content (LEVELS 3/4)- USDA Biobased – Meeting Government Biobased Regulations (PREFERRED)- Cradle to Cradle Institute – Full Lifecycle Assessment (GOLD)- NSF – FACTS certification (NSF 336)

Xorel products can also help a project achieve multiple credits under LEED for commercial interiors:Material Sourcing (Rapidly Renewable Content)Indoor Air Quality (SCS Indoor Advantage Gold)Material Optimization (Cradle to Cradle Gold)Material Transparency (Healthy Product Declaration)

Pattern Repeat Size Not Applicable

Roll Size Unbacked - 142cm

X-Protect Wall - 132cm

X-Protect Sit - 137cm

Acrylic Backed - 137cm x Approx 60m - available by the lineal metre.

MINIMUM ORDER for X-Protect Sit - 5 lineal metres

MINIMUM ORDER for Acrylic Backed - 15 lineal metres

Abrasion 1,000,000 + double rubs Wyzenbeek

STRIE

Wallcoverings » Commercial Wallcoverings

Fire Rating

As a wallcovering - Tested in accordance with AS/NZS 3837 and AS 5637.1:2015 for the purposes of Group Number Classification as specified in the NCC Volume One Specification C1.10 Clause 4

Classification - Group 1

Specific Extinction - Less than 250 m²/kg

As a fabric - Tested in accordance with AS1530.3

Spread of Flame Index - 0

Smoke Developed Index - 4

Lead Time

- 5-weeks (approx) from Wednesday subject to stock availability.
 - Additional 1-week for Western Australia.
 - Unbacked 2-3 weeks.
 - Express delivery is available subject to a surcharge. Contact Baresque for details and pricing
-

Suggested Installation

As a wallcovering - trim selvedge and butt join.

Download the Installation Instructions for details.

Baresque recommends and supply Roman brand adhesives and primers.

STRIE

Wallcoverings » Commercial Wallcoverings

Care Instructions

Xorel yarns are non-absorbent; dust and stains cannot penetrate them.

Regular maintenance will keep the fabric looking new for many years. Periodic vacuuming will remove dust that may settle between the yarns.

Most stains that dry between the yarns or on the surface can be eliminated by wiping the fabric with a cloth moistened with hot tap water. Some stains may require additional treatment. These stains can be cleaned with a variety of water or solvent based cleaners.

When using solvent based cleaners on paperbacked Xorel fabric, test on a small area first. Residue from these cleaners must be removed with hot water and a clean sponge. After cleaning, towel dry.

Hardened solids can be removed with stiff brush or a sharp-edged instrument without damaging the fabric. However, the brush or sharp instrument should not be used close to seams.

Hospital grade disinfectant cleaners can be safely used on Xorel fabrics. Always follow the directions for the specific brand being used as contact times may vary depending on the product. Diluted bleach solution (up to 40%) can also be used on Xorel for disinfecting purposes.

Always test in an inconspicuous area first. If care instructions don't deliver the expected results, cease cleaning method immediately and contact Baresque for assistance.

Warranty

7-year warranty. Visit baresque.com.au/warranty for complete details.

Additional Comments Why Xorel?

Beautiful, Functional and Sustainable

DURABLE

Stands up to abuse in high-traffic areas. 200,000 to 1 million double rubs on the Wyzenbeek Abrasion Test

Colourfast / Lightfast

Solution dyed. Colour not affected by cleaning products (including diluted bleach) or light exposure.

Trackable

Highly tuckable yarns can "move back" into position

EFFORTLESS MAINTANANCE

Stain resistant yarns

Water and stains do not penetrate the extruded yarn.

Easy to Clean

Can be aggressively cleaned with water, solvent, cleaners and diluted bleach.

Inherently Anti-Microbial

Antibacterial, anti-fungal, anti-staph without the use of added finishes.

SUSTAINABLE + INDUSTRY PROVEN

100% PVC Free

Free of PVC, chlorine, plasticizers, heavy metals and ozone depleting chemicals.

Biobased

The world's first Biobased high-performance textile. Biobased Xorel is a true plant-based product with significantly reduced carbon footprint.

Third Party Certified

Cradle to Cradle Gold/Silver, SCS Indoor Air Advantage Gold, NSF - Facts certification (NSF 336), Green Spec, Up to 4 Leed points, Healthy Product Declaration (HPDs) available.

How to Specify

1. Colour

2. Backing - Available Unbacked or with X-Protect Wall, X-Protect Sit or Acrylic backings.

Xorel Backings guide:

X - Protect Wall

- 100% Water repellent
- Water / Solvent / Bleach Cleanable (up to 40%). May be cleaned with hospital grade disinfectants.
- Prevents bacterial and fungal strike-through (AATCC 100, ASTM G-21-70, ASTM G-22-76)
- 132 cm wide
- Microvented

Unbacked

- Acoustically transparent (degree varies by pattern, measured by NRC test)
- Highly stable, ability to self heal, yarns can "move back" into position
- Water / Solvent / Diluted Bleach Cleanable (up to 40%). May be cleaned with hospital grade disinfectants.
- 142.2 cm wide

X-Protect Sit

- Complete Moisture barrier
 - Water / Solvent / Bleach Cleanable (up to 40%)
 - May be cleaned with hospital grade disinfectants
 - Prevents bacterial and fungal strike-through (AATCC 100, ASTM G-21-70, ASTM G-22-76)
 - 137 cm wide
-

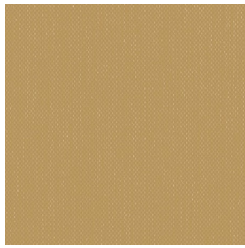
Colour & Finish Options

COLOURWAY
CARD

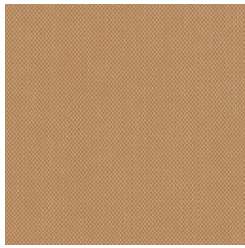
				
COLOURWAY CARD	6423 800	6423 801	6423 802	6423 803
				
6423 804	6423 805	6423 806	6423 807	6423 808
				
6423 809	6423 810	6423 811	6423 812	6423 813
				
6423 814	6423 815	6423 816	6423 817	6423 818
				
6423 819	6423 820	6423 821	6423 822	6423 823

STRIE

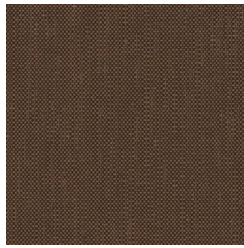
Wallcoverings » Commercial Wallcoverings



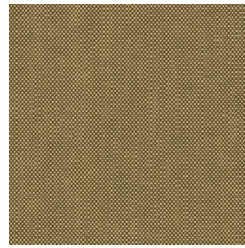
6423 824



6423 825



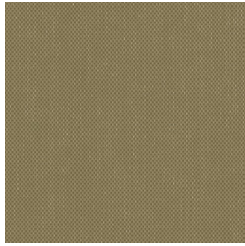
6423 826



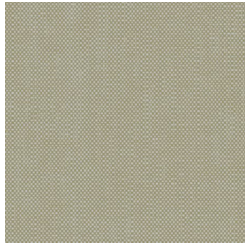
6423 827



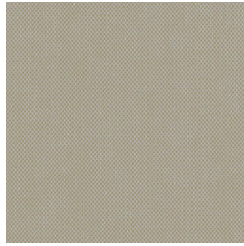
6423 828



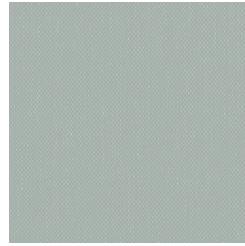
6423 829



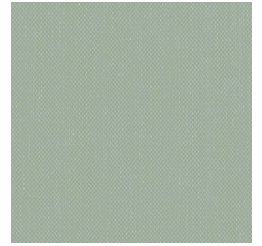
6423 830



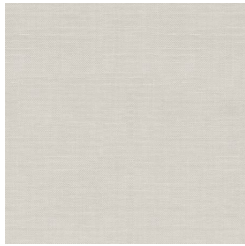
6423 831



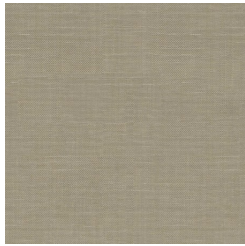
6423 832



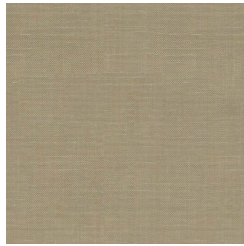
6423 833



6423-834



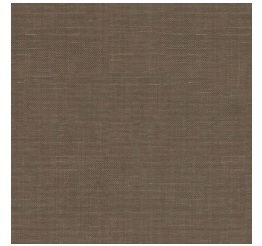
6423-835



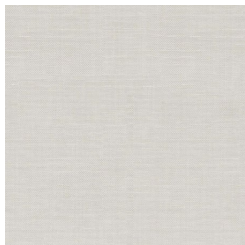
6423-836



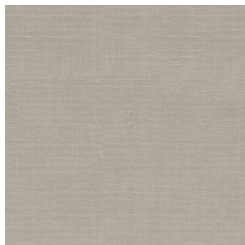
6423-837



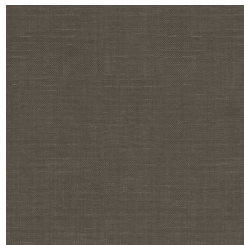
6423-838



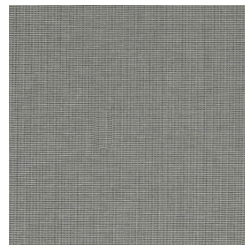
6423-839



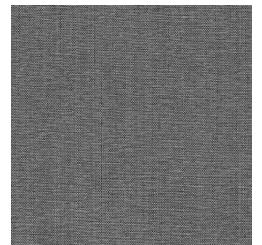
6423-840



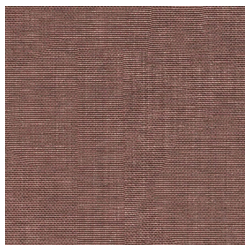
6423-841



6423-842



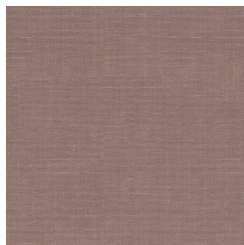
6423-843



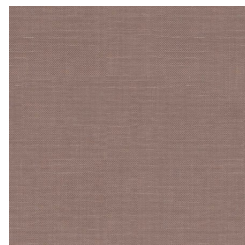
6423-844



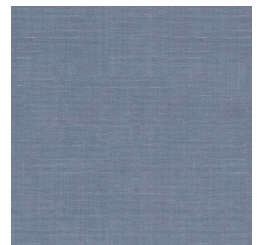
6423-845



6423-846



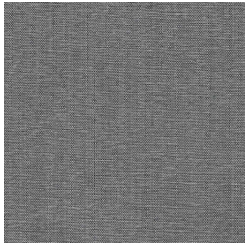
6423-847



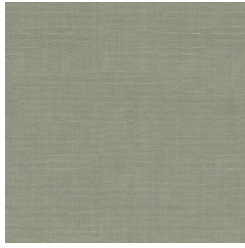
6423-848

STRIE

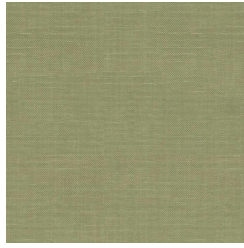
Wallcoverings » Commercial Wallcoverings



6423-849



6423-850



6423-851



6423-852