

# RAVELLE

Wallcoverings » Commercial Wallcoverings



Brand: **Versa**

Applications: **Walls**

1300 306 399

info@baresque.com.au

**baresque.com.au**

1 of 4

# RAVELLE

Wallcoverings » Commercial Wallcoverings

Ravelle is a 137cm wide commercial wallcovering with horizontal lines that's available in 17 colourways. Durable, versatile and easy to clean.

✓ **Bleach Cleanable**

Description	<p>Versa introduces companion designs - Ravelle and Ravelle Texture.</p> <p>Sporting exciting colours in each palette, these two designs match colour ways - one for one. Ravelle adds an overprint of undulating lines to the horizontal background of Ravelle Texture.</p>
Composition	<p>Vinyl face on a woven backing 20oz (452 g/m<sup>2</sup>)</p>
Environmental Info	<p>Formaldehyde free</p> <p>Heavy metals free</p> <p>Perfluorooctanoic acid free</p> <p>No solvent inks</p> <p>Low VOC emissions. Any VOCs dissipate quickly (faster than paint) through normal ventilation and have no recognized adverse impact on indoor air quality.</p> <p>Durability means products do not need to be replaced regularly due to wear and tear and being cleanable, vinyl products are ideal for helping keep commercial environments clean of bacteria.</p> <p>Baresque will only deal with vinyl manufacturers that comply with applicable state and federal regulations, provide a factory that is safe and clean for its employees to work in, recycle scrap and inks during the manufacturing process to minimize waste related to production.</p>
Pattern Repeat Size	<p>N/A</p>
Roll Size	<p>137cm wide x 27.4m - Available by the lineal metre</p>
Fire Rating	<p>Tested in accordance with AS ISO 9705 2003 for the purpose of determining the Group Number classification as required by the Building Code of Australia for the control of fire spread on interior wall and ceiling linings.</p> <p>The result achieved was: Classification - Group 2 Specific Extinction - Less than 250m<sup>2</sup>/kg</p>

# RAVELLE

Wallcoverings » Commercial Wallcoverings

---

Lead Time	<ul style="list-style-type: none"><li>• 2-weeks (approx.) from Wednesday, subject to stock availability.</li><li>• Additional 1-week for Western Australia.</li><li>• Express delivery is available subject to a surcharge. Contact Baresque for details and pricing.</li></ul>
-----------	---

---

Suggested Installation	<p>Reverse hang / overlap and double cut.</p> <p>Baresque recommends and supply Roman brand adhesives and primers.</p>
------------------------	--

---

Care Instructions	<p>Always use a clean, white, soft cloth.</p> <p>Use cloth with any of the following in preferred order of use:</p> <ol style="list-style-type: none"><li>1: Clear warm water</li><li>2: Mild solution of liquid detergent and warm water</li><li>3: Isopropyl Alcohol (a.k.a. rubbing alcohol)</li></ol> <p>Remove any detergent with a clean, damp cloth. Gently pat dry.</p> <p>For more difficult stains, dampen a soft white cloth with a solution of household bleach (10% bleach / 90% water). Rub gently.</p> <p>Rinse with a water dampened cloth to remove bleach concentration.</p> <p>DO NOT USE solvent based or concentrated abrasive cleaning agents, lacquer thinners, nail polish remover as these may cause discolouration over a period of time.</p> <p>Always test in an inconspicuous area first. If care instructions don't deliver the expected results, cease cleaning method immediately and contact Baresque for assistance.</p>
-------------------	--

---

Warranty	5-year warranty. Visit <a href="https://baresque.com.au/warranty">baresque.com.au/warranty</a> for complete details.
----------	--

---

## Colour & Finish Options

### COLOURWAY CARD



A162-087 SEA SALT



A162-164 STUCCO



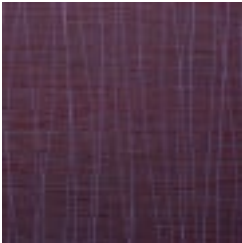
A162-199 PORCELAIN



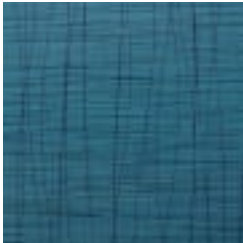
A162-224 SPRIG



A162-293 BAMBOO  
LEAF



A162-315  
BLACKBERRY



A162-326 JADE  
GARDEN



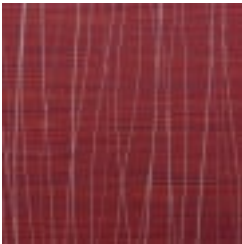
A162-339 INKWELL



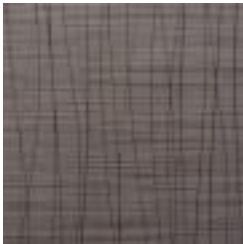
A162-370 TWILIGHT



A162-384 SKY HIGH



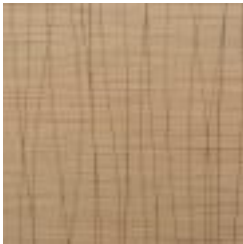
A162-450 DAREDEVIL



A162-580 PIER



A162-592  
CANDLEWICK



A162-661 ARIZONA



A162-845 PEWTER



A162-881 DORIAN  
GRAY



A162-896 FOSSIL