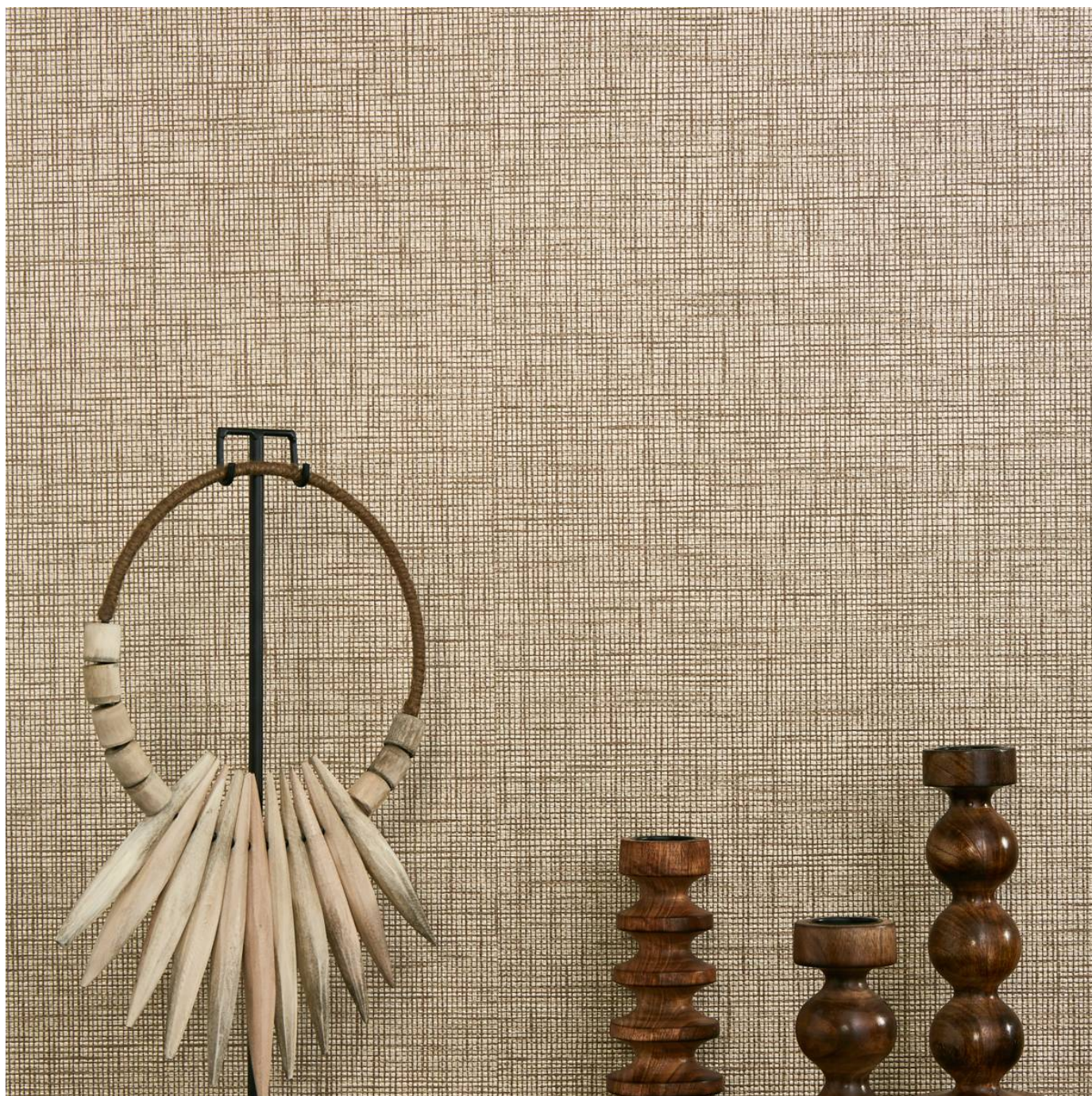


PAPER WEAVE

Wallcoverings » Commercial Wallcoverings



Brand: **Bolta**

Applications: **Walls**

1300 306 399

info@baresque.com.au

baresque.com.au

1 of 4

PAPER WEAVE

Wallcoverings » Commercial Wallcoverings

Paper Weave is a 137cm wide commercial wallcovering with a textured appeal in high lustre organic hues. Available in 19 colours. Durable and versatile

✓ **Bleach Cleanable**

Description Coarse textured appeal with high lustre organic hues. Some colours of Paper Weave are also available in matching P3TEC - a new generation of Advanced Wall Protection. Check out the Additional Comments below or the DOWNLOADS tab for more details.

Composition Vinyl face on a fabric backing Equivalent to 20oz (452 g/m²)

Environmental Info

- Formaldehyde free
- Heavy metals free
- Perfluorooctanoic acid free
- No solvent inks

Low VOC emissions. Any VOCs dissipate quickly (faster than paint) through normal ventilation and have no recognized adverse impact on indoor air quality.

Durability means products do not need to be replaced regularly due to wear and tear and being cleanable, vinyl products are ideal for helping keep commercial environments clean of bacteria.

Baresque will only deal with vinyl manufacturers that comply with applicable state and federal regulations, provide a factory that is safe and clean for its employees to work in, recycle scrap and inks during the manufacturing process to minimize waste related to production.

Pattern Repeat Size N/A

Roll Size 137cm wide x 27.4m - Available by the lineal metre

Fire Rating Tested in accordance with AS ISO 9705 2003 for the purpose of determining the Group Number classification as required by the Building Code of Australia for the control of fire spread on interior wall and ceiling linings.

The result achieved was:
Classification - Group 2
Specific Extinction - Less than 250m²/kg

PAPER WEAVE

Wallcoverings » Commercial Wallcoverings

Lead Time

- 2-weeks (approx.) from Wednesday, subject to stock availability.
- Additional 1-week for Western Australia.
- Express delivery is available subject to a surcharge. Contact Baresque for details and pricing.

Suggested Installation

Reverse hang / overlap and double cut.

Baresque recommends and supply Roman brand adhesives and primers.

Care Instructions

Use cloth with any of the following in preferred order of use:

- 1: Clear warm water
- 2: Mild solution of liquid detergent and warm water
- 3: Isopropyl Alcohol (a.k.a. rubbing alcohol)

Remove any detergent with a clean, damp cloth. Gently pat dry.

For more difficult stains, dampen a soft white cloth with a solution of household bleach (10% bleach / 90% water). Rub gently.

Rinse with a water dampened cloth to remove bleach concentration.

Do not use solvent based or concentrated abrasive cleaning agents, lacquer thinners or nail polish remover as these may cause discolouration over a period of time.

Always test in an inconspicuous area first.

If care instructions don't deliver the expected results, cease cleaning method immediately and contact Baresque for assistance.

Warranty

5-year warranty. Visit [baresque.com.au/warranty](https://www.baresque.com.au/warranty) for complete details.

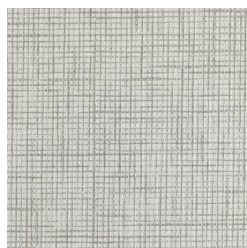
Additional Comments

Paper Weave is also available in matching P3TEC design Raffia Weave - a new generation of Advanced Wall Protection. Cross over colours are BB-PW-01, 02, 03, 06, 07, 09, 11, 13, 14, 16, 17, 18.

PAPER WEAVE

Wallcoverings » Commercial Wallcoverings

Colour & Finish Options



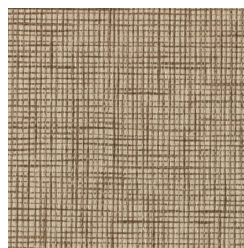
BB-PW-01 BIANCA



BB-PW-02 CANVAS



BB-PW-03 CASHMERE



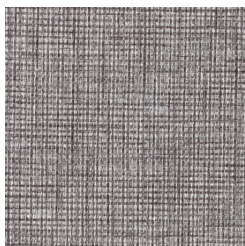
BB-PW-06 FLOSS



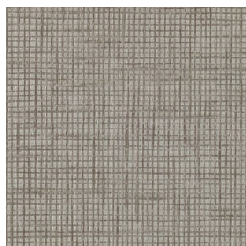
BB-PW-07 LINEN



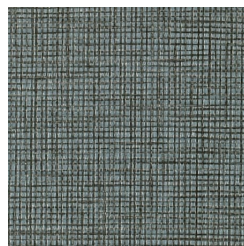
BB-PW-08 JUTE



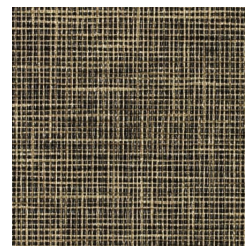
BB-PW-11 TUSSAH



BB-PW-14 REIN



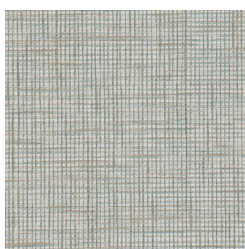
BB-PW-16 ANTIQUE
BLUE



BB-PW-18 MANGROVE



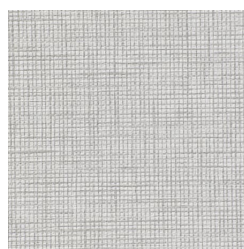
BB-PW-19 OCEAN AIR



BB-PW-20 SPRIG



BB-PW-21
PLUMBERRY



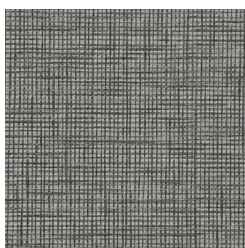
BB-PW-22 SILVER
CLOUD



BB-PW-23 FROTHY



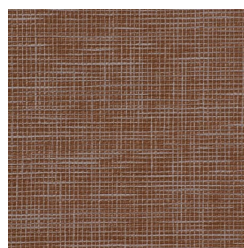
BB-PW-24 ABALONE



BB-PW-25 FULL
MOON



BB-PW-26 CRISP



BB-PW-27 ALLSPICE