

# MANDOLIN

Wallcoverings » Commercial Wallcoverings



Brand: **Versa**

Applications: **Walls**

1300 306 399

[info@baresque.com.au](mailto:info@baresque.com.au)

[baresque.com.au](http://baresque.com.au)

1 of 4

# MANDOLIN

Wallcoverings » Commercial Wallcoverings

Mandolin is a 137cm wide commercial wallcovering with multi-coloured horizontal lines displayed in 16 colours. Versatile, durable, and easy to clean.

✓ **Bleach Cleanable**

|             |   |
|-------------|---|
| Composition | Vinyl face on a fabric backing 20oz (452 g/m <sup>2</sup> ) |
|-------------|---|

|                    |  |
|--------------------|--|
| Environmental Info | <p>Formaldehyde free</p> <p>Heavy metals free</p> <p>Perfluorooctanoic acid free</p> <p>No solvent inks</p> <p>Low VOC emissions. Any VOCs dissipate quickly (faster than paint) through normal ventilation and have no recognized adverse impact on indoor air quality.</p> <p>Durability means products do not need to be replaced regularly due to wear and tear and being cleanable, vinyl products are ideal for helping keep commercial environments clean of bacteria.</p> <p>Baresque will only deal with vinyl manufacturers that comply with applicable state and federal regulations, provide a factory that is safe and clean for its employees to work in, recycle scrap and inks during the manufacturing process to minimize waste related to production.</p> |
|--------------------|--|

|                     |     |
|---------------------|-----|
| Pattern Repeat Size | N/A |
|---------------------|-----|

|           |  |
|-----------|--|
| Roll Size | 137cm wide x 27.4m - Available by the lineal metre |
|-----------|--|

|             |  |
|-------------|--|
| Fire Rating | <p>Tested in accordance with AS ISO 9705 2003 for the purpose of determining the Group Number classification as required by the Building Code of Australia for the control of fire spread on interior wall and ceiling linings.</p> <p>The result achieved was:<br/>Classification - Group 2<br/>Specific Extinction - Less than 250m<sup>2</sup>/kg</p> |
|-------------|--|

|           |   |
|-----------|---|
| Lead Time | <ul style="list-style-type: none"><li>• 2-weeks (approx.) from Wednesday, subject to stock availability.</li><li>• Additional 1-week for Western Australia.</li><li>• Express delivery is available subject to a surcharge. Contact Baresque for details and pricing.</li></ul> |
|-----------|---|

# MANDOLIN

Wallcoverings » Commercial Wallcoverings

---

## Suggested Installation

Reverse hang / overlap and double cut.

Baresque recommends and supply Roman brand adhesives and primers.

---

## Care Instructions

Always use a clean, white, soft cloth.

Use cloth with any of the following in preferred order of use:

1: Clear warm water

2: Mild solution of liquid detergent and warm water

3: Isopropyl Alcohol (a.k.a. rubbing alcohol)

Remove any detergent with a clean, damp cloth. Gently pat dry.

For more difficult stains, dampen a soft white cloth with a solution of household bleach (10% bleach / 90% water). Rub gently.

Rinse with a water dampened cloth to remove bleach concentration.

DO NOT USE solvent based or concentrated abrasive cleaning agents, lacquer thinners, nail polish remover as these may cause discolouration over a period of time.

Always test in an inconspicuous area first. If care instructions don't deliver the expected results, cease cleaning method immediately and contact Baresque for assistance.

---

## Warranty

5-year warranty. Visit [baresque.com.au/warranty](https://baresque.com.au/warranty) for complete details.

---

## Additional Comments

Due to the nature of this design, there will be a slight and unavoidable panelling effect when installed

---

# MANDOLIN

Wallcoverings » Commercial Wallcoverings

## Colour & Finish Options

### COLOURWAY CARD

COLOURWAY CARD



A181-009 HONEY  
VANILLA



A181-082 BIRCH



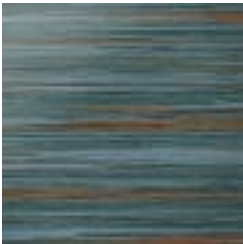
A181-116 NORTH  
BEACH



A181-179 KHAKI



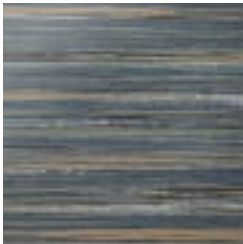
A181-200 SEA GLASS



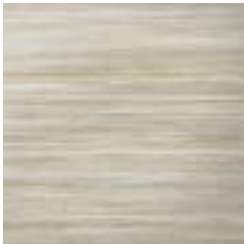
A181-213 TROPICS



A181-321 MOUNTAIN  
RIVER



A181-327 DEEP SPACE



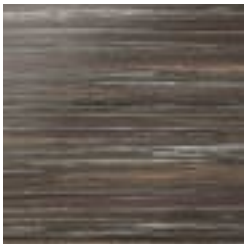
A181-502 RAW SILK



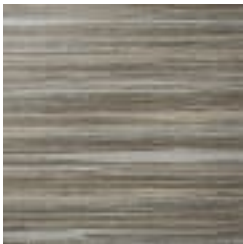
A181-511 METROPOLIS



A181-512 LOFT SPACE



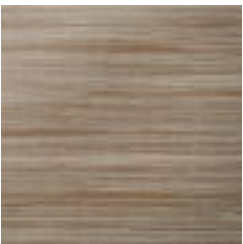
A181-537 CHERRY  
COLA



A181-598 CANYON  
WALL



A181-621 DUNE GLOW



A181-661 RUSTIC  
EARTH



A181-777 HARVEST  
MOON