

JENSEN

Wallcoverings » Commercial Wallcoverings



Brand: **Koroseal**

Applications: **Walls**

1300 306 399

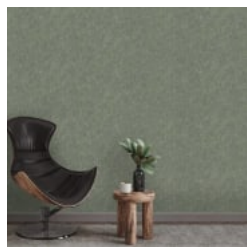
info@baresque.com.au

baresque.com.au

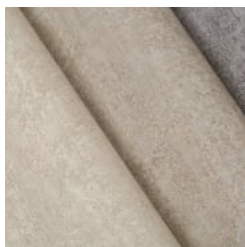
1 of 5

JENSEN

Wallcoverings » Commercial Wallcoverings



jensen-jade-jn21-05-
promo-1.jpg



jensen-promo-3.jpg



jensen-promo-4.jpg



jensen-promo-5.jpg

JENSEN

Wallcoverings » Commercial Wallcoverings

Jensen is a 137cm wide commercial wallcovering with a soft, small-scale, organic pattern displayed in 16 colourways. Versatile and durable.

Description	Jensen is a soft, small-scale, organic pattern evoking the look of weather-worn stone. Subtle undertones in the context of this design complement the main colour story, providing depth and dimension. Jensen's soothing colour palette takes cues from nature with the incorporation of both cool and warm tones. A design that is perfect for the modern interiors of today. Features + Benefits * Bleach cleanable * 20 Colourways * Highly durable * Anti-microbial * Low VOC
Composition	Vinyl face on a non-woven backing
Environmental Info	<p>Formaldehyde free</p> <p>Heavy metals free</p> <p>Perfluorooctanoic acid free</p> <p>No solvent inks</p> <p>Low VOC emissions. Any VOCs dissipate quickly (faster than paint) through normal ventilation and have no recognized adverse impact on indoor air quality.</p> <p>Durability means products do not need to be replaced regularly due to wear and tear and being cleanable, vinyl products are ideal for helping keep commercial environments clean of bacteria.</p> <p>Baresque will only deal with vinyl manufacturers that comply with applicable state and federal regulations, provide a factory that is safe and clean for its employees to work in, recycle scrap and inks during the manufacturing process to minimize waste related to production.</p>
Pattern Repeat Size	N/A
Roll Size	137cm wide x 27.4m - Available by the lineal metre
Fire Rating	<p>Tested in accordance with AS ISO 9705 2003 for the purpose of determining the Group Number classification as required by the Building Code of Australia for the control of fire spread on interior wall and ceiling linings.</p> <p>The result achieved was: Classification - Group 2 Specific Extinction - Less than 250m²/kg</p>

Lead Time	<ul style="list-style-type: none">• 2-weeks (approx.) from Wednesday, subject to stock availability.• Additional 1-week for Western Australia.• Express delivery is available subject to a surcharge. Contact Baresque for details and pricing.
Suggested Installation	<p>Non reverse hang/overlap double cut.</p> <p>Baresque recommends and supplies Roman brand adhesives and primers.</p>
Care Instructions	<p>Use cloth with any of the following in preferred order of use:</p> <ol style="list-style-type: none">1: Clear warm water2: Mild solution of liquid detergent and warm water3: Isopropyl Alcohol (a.k.a. rubbing alcohol) <p>Remove any detergent with a clean, damp cloth. Gently pat dry.</p> <p>For more difficult stains, dampen a soft white cloth with a solution of household bleach (10% bleach / 90% water). Rub gently.</p> <p>Rinse with a water dampened cloth to remove bleach concentration.</p> <p>Do not use solvent based or concentrated abrasive cleaning agents, lacquer thinners or nail polish remover as these may cause discolouration over a period of time.</p> <p>Always test in an inconspicuous area first.</p> <p>If care instructions don't deliver the expected results, cease cleaning method immediately and contact Baresque for assistance.</p>
Warranty	<p>5-year warranty. Visit baresque.com.au/warranty for complete details.</p>

Colour & Finish Options

COLOURWAY CARD

COLOURWAY CARD



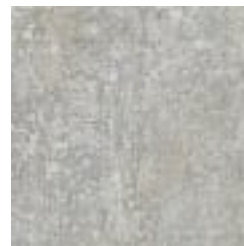
JN21-01 PAPER BIRCH



JN21-02 WICKER



JN21-03 ECRU



JN21-04 RIVER ROCK



JN21-05 JADE



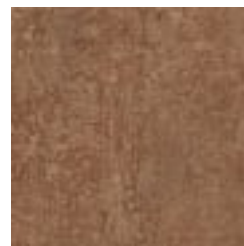
JN21-07 GLACIER



JN21-08 FLINT



JN21-09 BRULEE'



JN21-10 PENNY



JN21-12 ZINC



JN21-13 LAUREL



JN21-14 INK



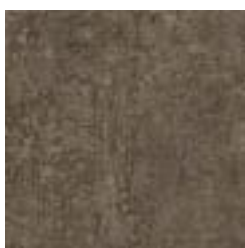
JN21-15 EBONY



JN21-16 CEMENT



JN21-17 MUSHROOM



JN21-20 CEDAR