

INSIGHT

Wallcoverings » Commercial Wallcoverings



Brand: **Koroseal**

Applications: **Walls**

1300 306 399

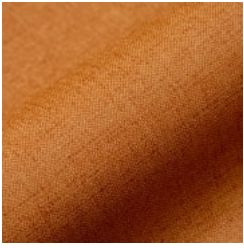
info@baresque.com.au

baresque.com.au

1 of 6

INSIGHT

Wallcoverings » Commercial Wallcoverings



insight_promo-3.jpg

INSIGHT

Wallcoverings » Commercial Wallcoverings

Insight is a 137cm wide commercial wallcovering with a natural fabric look that's available in 28 colourways. It's versatile, durable and easy to clean

✓ **Bleach Cleanable**

Description	Woven, linen fabrics from organic flax fibers are the inspiration behind classic design Insight. A bit of glimmer from pearl and metallic accents adds a modern reflection to this natural fabric look. Be sure to check out coordinating Insight Grid.
Composition	Vinyl face on a fabric backing Equivalent to 20oz (452g/m ²)
Environmental Info	<p>Formaldehyde free</p> <p>Heavy metals free</p> <p>Perfluorooctanoic acid free</p> <p>No solvent inks</p> <p>Low VOC emissions. Any VOCs dissipate quickly (faster than paint) through normal ventilation and have no recognized adverse impact on indoor air quality.</p> <p>Durability means products do not need to be replaced regularly due to wear and tear and being cleanable, vinyl products are ideal for helping keep commercial environments clean of bacteria.</p> <p>Baresque will only deal with vinyl manufacturers that comply with applicable state and federal regulations, provide a factory that is safe and clean for its employees to work in, recycle scrap and inks during the manufacturing process to minimize waste related to production.</p>
Pattern Repeat Size	N/A
Roll Size	137cm wide x 27.4m - Available by the lineal metre
Fire Rating	<p>Tested in accordance with AS ISO 9705 2003 for the purpose of determining the Group Number classification as required by the Building Code of Australia for the control of fire spread on interior wall and ceiling linings.</p> <p>The result achieved was: Classification - Group 2 Specific Extinction - Less than 250m²/kg</p>

Lead Time	<ul style="list-style-type: none">• 2-weeks (approx.) from Wednesday, subject to stock availability.• Additional 1-week for Western Australia.• Express delivery is available subject to a surcharge. Contact Baresque for details and pricing.
Suggested Installation	<p>Reverse hang / overlap and double cut.</p> <p>Baresque recommends and supply Roman brand adhesives and primers.</p>
Care Instructions	<p>Use cloth with any of the following in preferred order of use:</p> <ol style="list-style-type: none">1: Clear warm water2: Mild solution of liquid detergent and warm water3: Isopropyl Alcohol (a.k.a. rubbing alcohol) <p>Remove any detergent with a clean, damp cloth. Gently pat dry.</p> <p>For more difficult stains, dampen a soft white cloth with a solution of household bleach (10% bleach / 90% water). Rub gently.</p> <p>Rinse with a water dampened cloth to remove bleach concentration.</p> <p>Do not use solvent based or concentrated abrasive cleaning agents, lacquer thinners or nail polish remover as these may cause discolouration over a period of time.</p> <p>Always test in an inconspicuous area first.</p> <p>If care instructions don't deliver the expected results, cease cleaning method immediately and contact Baresque for assistance.</p>
Warranty	<p>5-year warranty. Visit baresque.com.au/warranty for complete details.</p>

Colour & Finish Options

COLOURWAY CARD



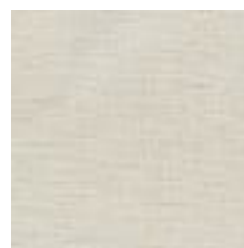
6322-01 URBAN



6322-03 CACTUS



6322-05 CITRUS



6322-09 BLONDE



6322-15 LINEN



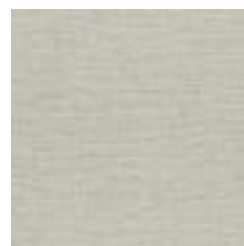
6322-20 DUNES



6322-21 NUDIST



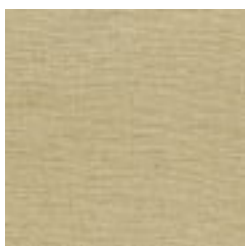
6322-41 PURLESQUE



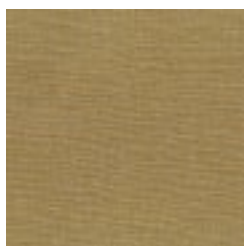
6322-45 GALAXY



6322-51 FLAXEN



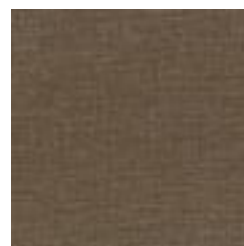
6322-52 CHAMPAGNE



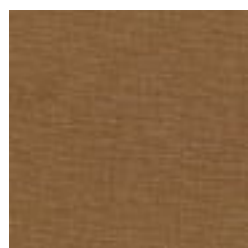
6322-55 GILT



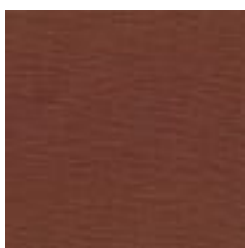
6322-58 CASHMERE



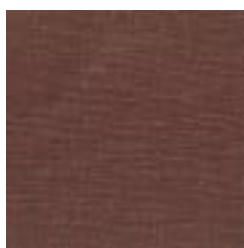
6322-59 ESPRESSO



6322-63 MOLTEN



6322-64 MARSALA



6322-65 BORDEAUX



6322-70 ROYALTY



6322-75 LINKS



6322-76 MONACO



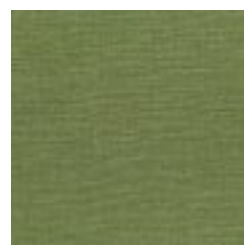
6322-77 INDIGO



6322-79 MAGICAL



6322-81 GREIGE



6322-83 ENVY

INSIGHT

Wallcoverings » Commercial Wallcoverings



6322-85 IVY LEAGUE



6322-90
ILLUMINATING



6322-91 SHIMMER



6322-94 MINERALISM