

CHESAPEAKE

Wallcoverings » Commercial Wallcoverings



Brand: **Versa**

Applications: **Walls**

CHESAPEAKE

Wallcoverings » Commercial Wallcoverings



chesapeake_promo-2.j
pg

CHESAPEAKE

Wallcoverings » Commercial Wallcoverings

Chesapeake is a 137cm wide commercial wallcovering with a embossed texture that's available in 18 colours. Durable, easy to clean and cost effective.

✓ **Bleach Cleanable**

Description	Fibrous texture treks across this design, creating a truly tactile experience.
Composition	Vinyl face on a woven backing 20oz (452 g/m²)
Environmental Info	<p>Formaldehyde free</p> <p>Heavy metals free</p> <p>Perfluorooctanoic acid free</p> <p>No solvent inks</p> <p>Low VOC emissions. Any VOCs dissipate quickly (faster than paint) through normal ventilation and have no recognized adverse impact on indoor air quality.</p> <p>Durability means products do not need to be replaced regularly due to wear and tear and being cleanable, vinyl products are ideal for helping keep commercial environments clean of bacteria.</p> <p>Baresque will only deal with vinyl manufacturers that comply with applicable state and federal regulations, provide a factory that is safe and clean for its employees to work in, recycle scrap and inks during the manufacturing process to minimize waste related to production.</p>
Pattern Repeat Size	N/A
Roll Size	132/137cm x 27.4m - Available by the lineal metre.
Fire Rating	<p>Tested in accordance with AS ISO 9705 2003 for the purpose of determining the Group Number classification as required by the Building Code of Australia for the control of fire spread on interior wall and ceiling linings.</p> <p>The result achieved was: Classification - Group 2 Specific Extinction - Less than 250m²/kg</p>
Lead Time	<ul style="list-style-type: none">• 2-weeks (approx.) from Wednesday, subject to stock availability.• Additional 1-week for Western Australia.• Express delivery is available subject to a surcharge. Contact Baresque for details and pricing.

CHESAPEAKE

Wallcoverings » Commercial Wallcoverings

Suggested Installation

Reverse hang / overlap and double cut.

Baresque recommends and supply Roman brand adhesives and primers.

Care Instructions

Always use a clean, white, soft cloth.

Use cloth with any of the following in preferred order of use:

1: Clear warm water

2: Mild solution of liquid detergent and warm water

3: Isopropyl Alcohol (a.k.a. rubbing alcohol)

Remove any detergent with a clean, damp cloth. Gently pat dry.

For more difficult stains, dampen a soft white cloth with a solution of household bleach (10% bleach / 90% water). Rub gently.

Rinse with a water dampened cloth to remove bleach concentration.

DO NOT USE solvent based or concentrated abrasive cleaning agents, lacquer thinners, nail polish remover as these may cause discolouration over a period of time.

Always test in an inconspicuous area first. If care instructions don't deliver the expected results, cease cleaning method immediately and contact Baresque for assistance.

Warranty

5-year warranty. Visit baresque.com.au/warranty for complete details.

CHESAPEAKE

Wallcoverings » Commercial Wallcoverings

Colour & Finish Options

COLOURWAY CARD

COLOURWAY CARD



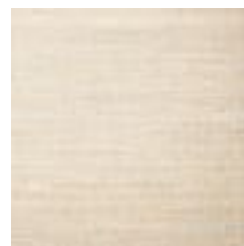
A167-000 CHIFFON



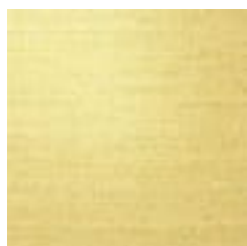
A167-101 LINO



A167-136 PAPYRUS



A167-158 ANGORA



A167-242 CITRINE



A167-279 LAUREL



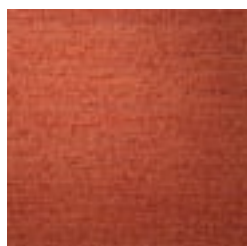
A167-355 ALLURE



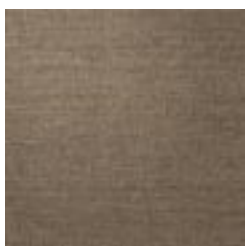
A167-383 ILLUSION



A167-391 SHADOW



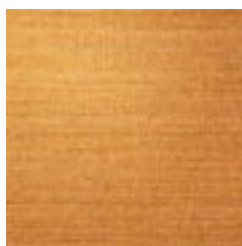
A167-472 CINNABAR



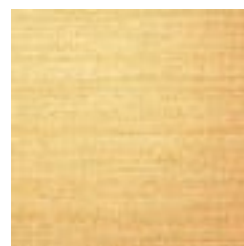
A167-503
SMOKEWOOD



A167-526 PALOMA



A167-674 PAPRIKA



A167-715 CORNSILK



A167-828 SUGAR
CANE



A167-837
CHANTERELLE



A167-849 ALABASTER



A167-865 FLINT