

Brand: **Crypton**

Applications: **Upholstery**

VIA

Fabrics » Woven Fabrics

Via is a 137cm wide woven upholstery with a multicoloured texture that's available in 10 colourways. Suitable for indoor.

Description	Via is a multicoloured texture that offers versatility and value. CRYPTON is a permanent moisture, soil resistance and anti-microbial protection backing.
Composition	CRYPTON - 53% polyester / 27% acrylic / 20% olefin
Pattern Repeat Size	N/A
Roll Size	137cm x Approx 55m - Available by the lineal metre
Abrasion	100,000+ Double Rubs (Wyzenbeek)
Fire Rating	This product can be treated with a fire retardant that will ensure it meets Australian Standard 1530.3. Contact Baresque for details.
Lead Time	<ul style="list-style-type: none">• 2-weeks (approx.) from Wednesday, subject to stock availability.• Additional 1-week for Western Australia.• Express delivery is available subject to a surcharge. Contact Baresque for details and pricing.
Care Instructions	<p>Mix 5 parts water with 1 part of an enzyme laundry detergent to have a mixture that works well on all stains.</p> <p>Most liquid spills simply blot off the surface with a dry towel. If a stains remains, follow these simple steps:</p> <ol style="list-style-type: none">1. Remove excess soil, and apply the soap mixture on the stained area2. Allow solution to remain on stain for 1 minute3. Blot up the stain with a dry, clean towel, rinse any remaining soap and blot the area again <p>Repeat these steps if a spot still remains. If agitation is necessary, spray the stained area and work the stain using a soft brush or edge of spoon from outside of spot toward the middle. Blot and rinse to remove any soap.</p>
Warranty	2-year warranty. Visit baresque.com.au/warranty for complete details.

Colour & Finish Options



COLOURWAY CARD



1011032 CREAMSICLE



1011033 ROUGE



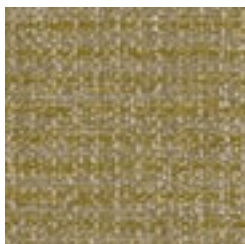
1011034 CHAMBRAY



1011035 AEGEAN



1011036 PALMETTO



1011037 CITRONELLA



1011038
BUTTERSCOTCH



1011039 EGGHELL



1011040 LONDON FOG



1011041 GRANITE