

SOLITAIRE ADVENTURE

Fabrics » Woven Fabrics



Brand: **Crypton**

Collections: **Adventure**

Applications: **Upholstery**

1300 306 399

info@baresque.com.au

baresque.com.au

1 of 5

SOLITAIRE ADVENTURE

Fabrics » Woven Fabrics



solitaire-adventure_promo-1.jpg

SOLITAIRE ADVENTURE

Fabrics » Woven Fabrics

Solitaire is a 149cm wide woven upholstery with a diamond pattern that's available in 4 colours. Suitable for indoors.

✓ **Bleach Cleanable**

✓ **Moisture Barrier**

Description	CRYPTON is a permanent moisture, soil resistance and anti-microbial protection backing.
Composition	CRYPTON - 100% polyester
Pattern Repeat Size	11.1cm V / 6.2cm H
Roll Size	149cm x Approx 45m - 55m - Available by the lineal metre.
Abrasion	75,000+ double rubs Wyzenbeek
Fire Rating	This product can be treated with a fire retardant that will ensure it meets Australian Standard 1530.3. Contact Baresque for details.
Lead Time	<ul style="list-style-type: none">• 2-weeks (approx.) from Wednesday, subject to stock availability.• Additional 1-week for Western Australia.• Express delivery is available subject to a surcharge. Contact Baresque for details and pricing.
Care Instructions	<p>Always use a clean, white, soft cloth.</p> <p>Prepare a mixture of 1/3 Napisan and 2/3 Fab. Combine the mixture with water to make a paste about the consistency of soft margarine i.e. not too runny. Apply using a soft bristle brush. Leave for 10 minutes.</p> <p>Use a brush and clean, warm water to remove the paste being sure to renew the water so that it remains clean.</p> <p>Never use stiff bristles or wire brushes, as they may damage the fabric. To prevent soil build-up, frequent vacuuming is recommended.</p> <p>Using a cloth to pat dry will help eliminate watermarks.</p> <p>For more difficult stains, dampen a soft white cloth with a solution of household bleach (10% bleach / 90% water). Rub gently. Rinse with a water dampened cloth to remove bleach concentration.</p> <p>Always test in an inconspicuous area first. If care instructions don't deliver the expected results, cease cleaning method immediately and contact Baresque for assistance.</p>

SOLITAIRE ADVENTURE

Fabrics » Woven Fabrics

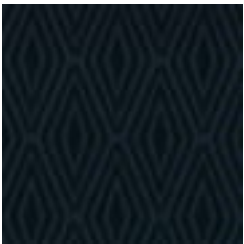
Warranty

2-year warranty. Visit baresque.com.au/warranty for complete details.

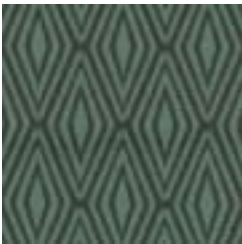
SOLITAIRE ADVENTURE

Fabrics » Woven Fabrics

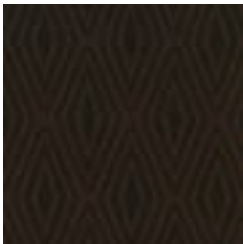
Colour & Finish Options



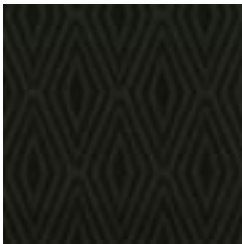
3009 MIDNIGHT BLUE



37 LAGOON



87 CHESTNUT



9009 BLACK