

# SOLARIS ATMOSPHERE

Fabrics » Woven Fabrics

---



Brand: **Panaz**

Applications: **Upholstery**

1300 306 399

[info@baresque.com.au](mailto:info@baresque.com.au)

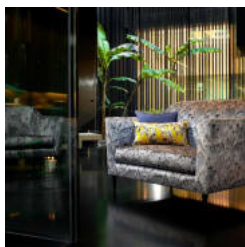
[baresque.com.au](http://baresque.com.au)

1 of 4

# SOLARIS ATMOSPHERE

**Fabrics** » Woven Fabrics

---



solaris-  
atmosphere\_promo-1.j  
pg

# SOLARIS ATMOSPHERE

Fabrics » Woven Fabrics

Solaris - Atmosphere is a 138cm woven upholstery with an abstract pattern that's available in 6 colourways. Suitable for indoors

Composition Trevira CS, FR polyester

Pattern Repeat Size 31cm V. x 34cm H.

Roll Size 138cm x N/A - Available by the lineal metre. MINIMUM ORDER 5 METRES

Abrasion 60,000 + double rubs Wyzenbeek

Fire Rating  
Tested in accordance with AS1530.3  
Spread of Flame Index - 0  
Smoke Developed Index - 5

Lead Time

- 2-weeks (approx.) from Wednesday, subject to stock availability.
- Additional 1-week for Western Australia.
- Express delivery is available subject to a surcharge. Contact Baresque for details and pricing.

Care Instructions

Always use a clean, white, soft cloth.

Clean in situ using a damp cloth and mild detergent. Sponge down afterwards with a clean, damp cloth.

Using a cloth to pat dry will help eliminate watermarks.

Ensure the pile is brushed back to its natural direction.

Upholstered furniture should be regularly vacuumed or brushed with a soft nylon brush to remove grit or dust, which may damage the pile.

Never use stiff bristles or wire brushes, as they may damage the fabric.

Always test in an inconspicuous area first. If care instructions don't deliver the expected results, cease cleaning method immediately and contact Baresque for assistance.

Warranty 2-year warranty. Visit [baresque.com.au/warranty](https://baresque.com.au/warranty) for complete details.

# SOLARIS ATMOSPHERE

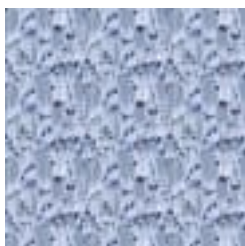
**Fabrics** » Woven Fabrics

---

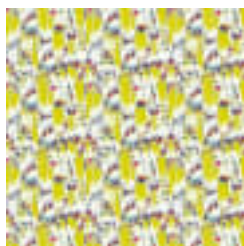
## Colour & Finish Options



107 CORNFLOWER



150 BLUE GREY



238 CITRUS



642 THISTLE



799 MINK BLACK



947 BLACK SILVER