

RUSH HOUR

Fabrics » Woven Fabrics



Brand: **Crypton**

Applications: **Upholstery**

1300 306 399

info@baresque.com.au

baresque.com.au

1 of 4

RUSH HOUR

Fabrics » Woven Fabrics

Rush Hour is 137cm wide woven upholstery with a bold and whimsical geometric design that's available in 5 multi-colours. Suitable for indoors.

✓ **Bleach Cleanable**

✓ **Moisture Barrier**

Description	Rush Hour is a bold and whimsical geometric design displaying clever color placement. Five unique multi-color options are designed to pull together other elements within a space. CRYPTON is a permanent moisture, soil resistance and anti-microbial protection backing.
-------------	--

Composition	CRYPTON - 100% polyester
-------------	--------------------------

Pattern Repeat Size	22.2cm V / 12.5cm H
---------------------	---------------------

Roll Size	137cm x Approx 45m - 55m - Available by the lineal metre
-----------	--

Abrasion	60,000 double rubs (Wyzenbeek)
----------	--------------------------------

Fire Rating	Tested in accordance with AS1530.3 Spread of Flame Index - 0 Smoke Developed Index - 5
-------------	--

Lead Time	<ul style="list-style-type: none">• 2-weeks (approx.) from Wednesday, subject to stock availability.• Additional 1-week for Western Australia.• Express delivery is available subject to a surcharge. Contact Baresque for details and pricing.
-----------	---

RUSH HOUR

Fabrics » Woven Fabrics

Care Instructions

Always use a clean, white, soft cloth.

Prepare a mixture of 1/3 Napisan and 2/3 Fab. Combine the mixture with water to make a paste about the consistency of soft margarine i.e. not too runny. Apply using a soft bristle brush. Leave for 10 minutes.

Use a brush and clean, warm water to remove the paste being sure to renew the water so that it remains clean.

Never use stiff bristles or wire brushes, as they may damage the fabric. To prevent soil build-up, frequent vacuuming is recommended.

Using a cloth to pat dry will help eliminate watermarks.

For more difficult stains, dampen a soft white cloth with a solution of household bleach (10% bleach / 90% water). Rub gently. Rinse with a water dampened cloth to remove bleach concentration.

Always test in an inconspicuous area first. If care instructions don't deliver the expected results, cease cleaning method immediately and contact Baresque for assistance.

Warranty

2-year warranty. Visit baresque.com.au/warranty for complete details.

RUSH HOUR

Fabrics » Woven Fabrics

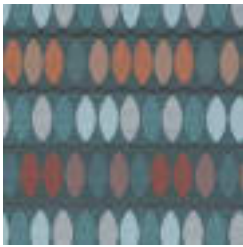
Colour & Finish Options



COLOURWAY CARD



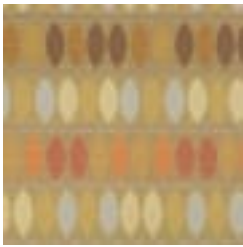
1009891 RAINFOREST



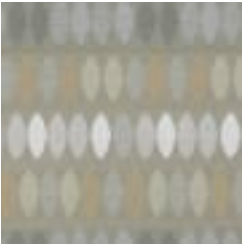
1009892 FIESTA



1009893 SUNSET



1009894 HARVEST



1009895 VEIL