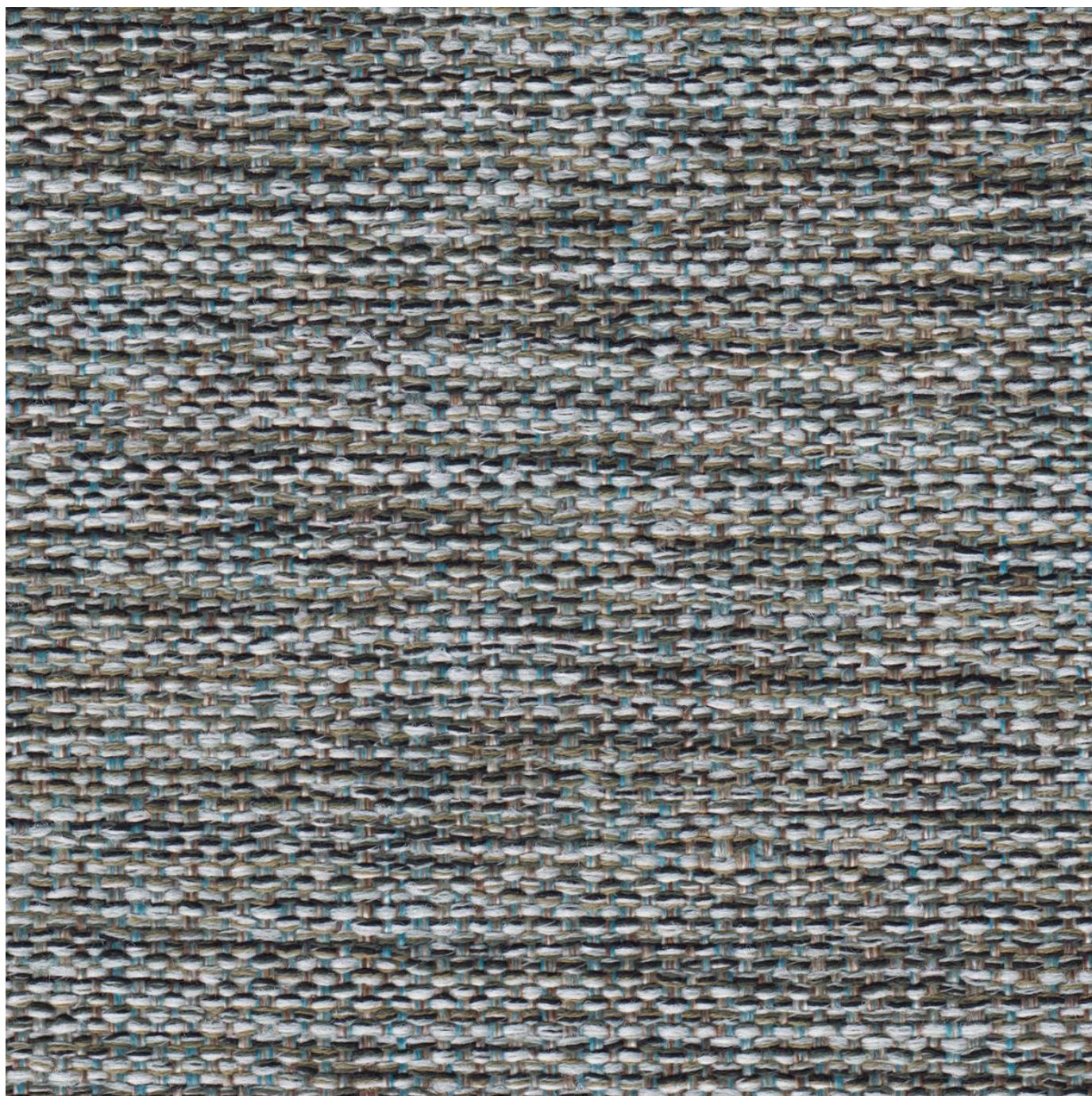


# NOTION

Fabrics » Woven Fabrics

---



Brand: **Crypton**

Applications: **Upholstery**

1300 306 399

[info@baresque.com.au](mailto:info@baresque.com.au)

[baresque.com.au](http://baresque.com.au)

1 of 5



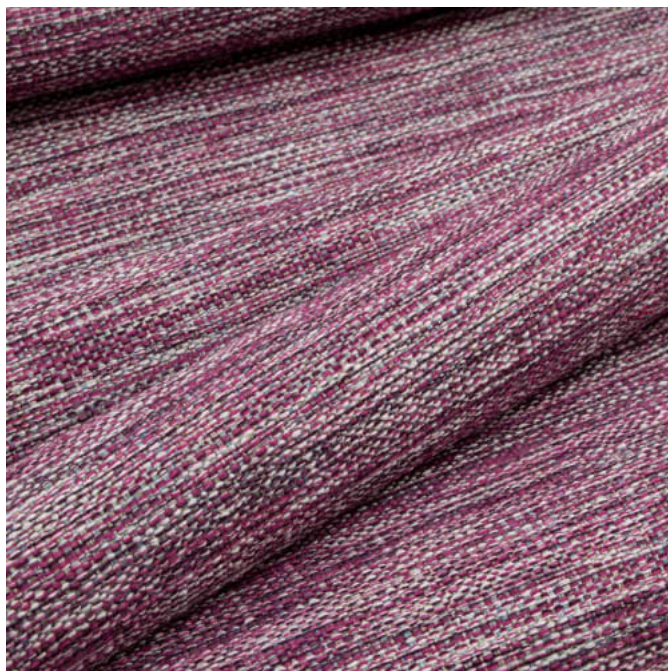
# NOTION

**Fabrics** » Woven Fabrics

---



notion\_promo2.jpg



notion\_promo3.jpg



notion\_promo5.jpg

# NOTION

Fabrics » Woven Fabrics

Notion is a 137cm wide woven upholstery with an intricate texture that's available in 17 colourways. Suitable for indoor. Bleach cleanable.

✓ **Bleach Cleanable**

✓ **Moisture Barrier**

Description	An intricate texture radiating with colorful energy. Notion is available in seventeen multifaceted shades with the ability to draw together elements within a space with ease. CRYPTON is a permanent moisture, soil resistance and anti-microbial protection backing.
-------------	------------------------------------------------------------------------------------------------------------------------------------------------------------------------------------------------------------------------------------------------------------------------

Composition	57% post consumer recycled polyester / 31% olefin / 11% polyester / 1% nylon
-------------	------------------------------------------------------------------------------

Environmental Info	<p>Greenguard Certifications contributes towards LEED credits for low-emitting furniture and ensures compliance with Business and Institutional Furniture Manufacturers Association (BIFMA) X7.1 standard and BIFMA e3 credit 7.6.1.</p> <p>Greenguard Gold Certification standard includes:</p> <ul style="list-style-type: none"><li>* Health-based criteria for additional chemicals and requires lower total VOC emissions levels to help ensure that products are acceptable for use in environments like schools and healthcare facilities.</li><li>* Products that also comply with requirements of the state of California's Department of Public Health (CDPH) "Standard Method for the Test and Evaluation of Volatile Organic Chemical Emissions from Indoor Sources Using Environmental Chambers, Version 1.2 (2017)" (also know as California Section 01350).</li><li>* Products that are compliant with the BIFMA X7.1 standard and BIFMA e3 credits 7.6.1, 7.6.2, and 7.6.3.</li></ul>
--------------------	-------------------------------------------------------------------------------------------------------------------------------------------------------------------------------------------------------------------------------------------------------------------------------------------------------------------------------------------------------------------------------------------------------------------------------------------------------------------------------------------------------------------------------------------------------------------------------------------------------------------------------------------------------------------------------------------------------------------------------------------------------------------------------------------------------------------------------------------------------------------------------------------------------------------------------------------------------------------------------------------------------

Pattern Repeat Size	N/A
---------------------	-----

Roll Size	137cm x Approx 55m - Available by the lineal metre
-----------	----------------------------------------------------

Abrasion	100,000 Double Rubs
----------	---------------------

Fire Rating	This product can be treated with a fire retardant that will ensure it meets Australian Standard 1530.3. Contact Baresque for details.
-------------	---------------------------------------------------------------------------------------------------------------------------------------

Lead Time	<ul style="list-style-type: none"><li>• 2-weeks (approx.) from Wednesday, subject to stock availability.</li><li>• Additional 1-week for Western Australia.</li><li>• Express delivery is available subject to a surcharge. Contact Baresque for details and pricing.</li></ul>
-----------	---------------------------------------------------------------------------------------------------------------------------------------------------------------------------------------------------------------------------------------------------------------------------------

## Care Instructions

Always use a clean, white, soft cloth.

Prepare a mixture of 1/3 Napisan and 2/3 Fab. Combine the mixture with water to make a paste about the consistency of soft margarine i.e. not too runny. Apply using a soft bristle brush. Leave for 10 minutes.

Use a brush and clean, warm water to remove the paste being sure to renew the water so that it remains clean.

Never use stiff bristles or wire brushes, as they may damage the fabric. To prevent soil build-up, frequent vacuuming is recommended.

Using a cloth to pat dry will help eliminate watermarks.

For more difficult stains, dampen a soft white cloth with a solution of household bleach (10% bleach / 90% water). Rub gently. Rinse with a water dampened cloth to remove bleach concentration.

Always test in an inconspicuous area first. If care instructions don't deliver the expected results, cease cleaning method immediately and contact Baresque for assistance.

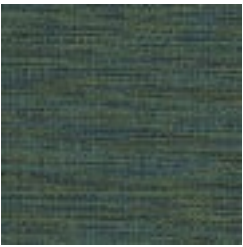
---

## Warranty

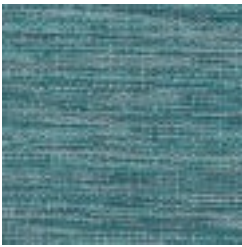
2-year warranty. Visit [baresque.com.au/warranty](https://baresque.com.au/warranty) for complete details.

---

## Colour & Finish Options



1010948 PEACOCK



1010949 SEAGLASS



1010950 ADMIRAL



1010951 VIOLET



1010952 MIXED BERRY



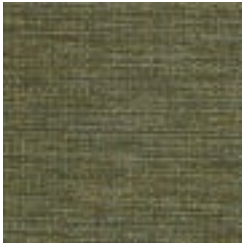
1010953 PERSIMMON



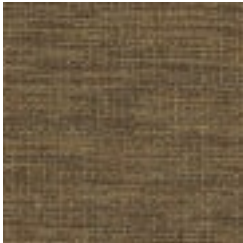
1010954 BRASS



1010955 KEY LIME



1010956 PALMETTO



1010957 UMBER



1010958 LONDON FOG



1010959 GRANITE



1010960 DRIFTWOOD



1010961 LATTE



1011052  
CORNFLOWER



1011053 DEEP TEAL



1011054 BLUEBIRD