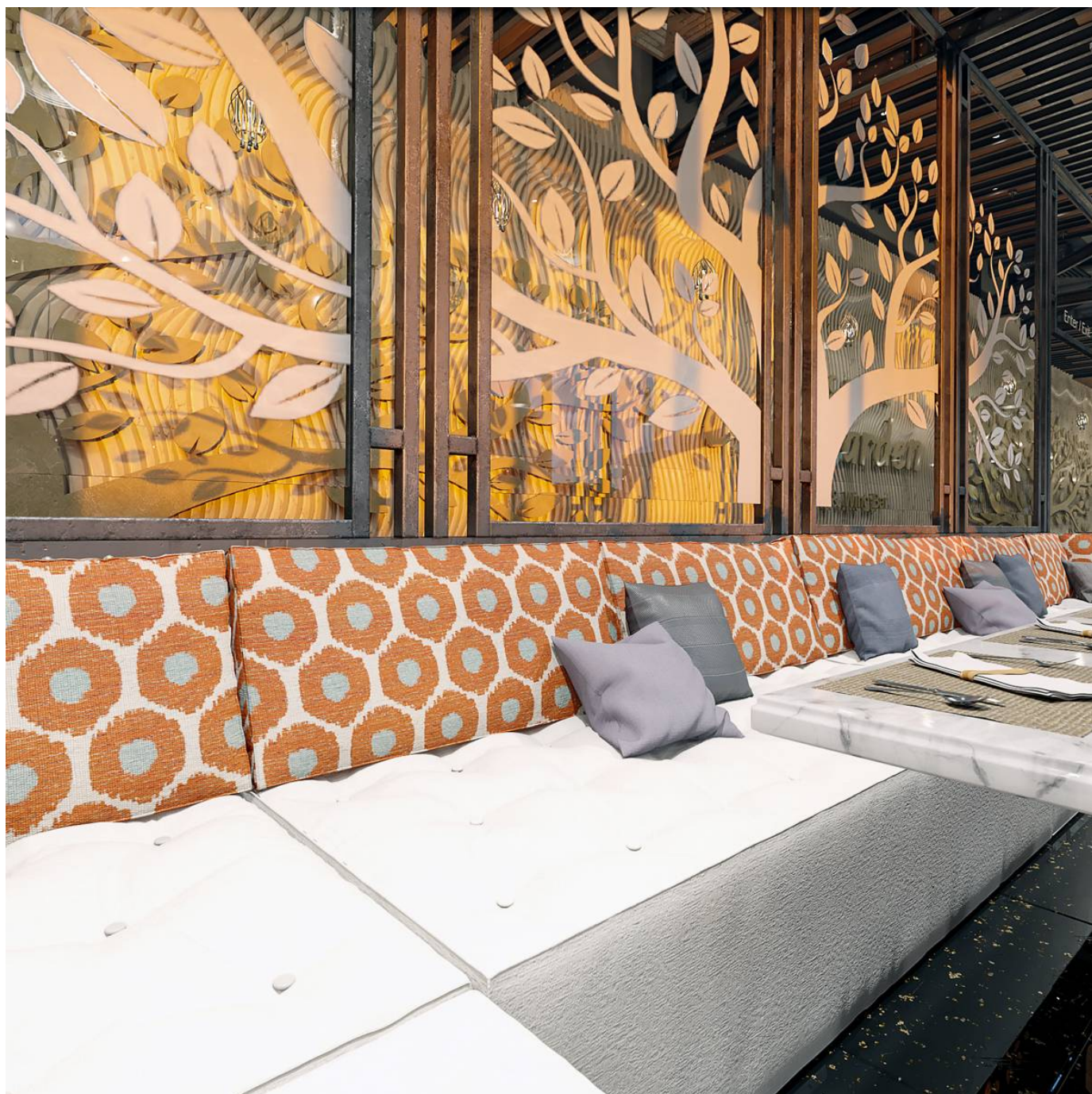


MARQUIS

Fabrics » Woven Fabrics



Brand: **Nanotex**

Applications: **Upholstery**

1300 306 399

info@baresque.com.au

baresque.com.au

1 of 5

MARQUIS

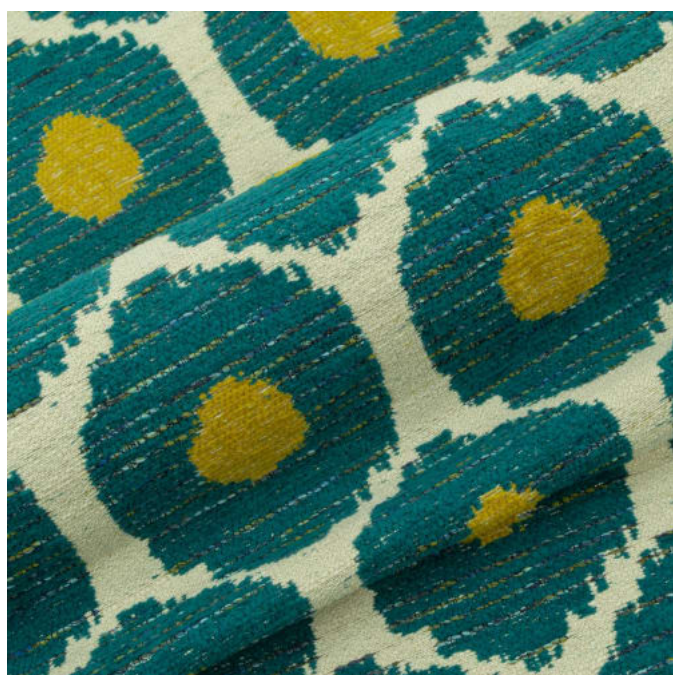
Fabrics » Woven Fabrics



marquis-promo-2.jpg



marquis-promo-3.jpg



marquis-promo-4.jpg

MARQUIS

Fabrics » Woven Fabrics

Marquis is a 137cm wide woven upholstery with a contemporary style and retro-leaning colours that's available in a palette of 14 hues. For indoors.

✓ **Bleach Cleanable**

Description With its contemporary style and retro-leaning colours, Marquis evokes an era where the vibe was chill and the carpet was shag. Funky hues like Tiger Lily and Mermaid keep Marquis' palette of fourteen hues fresh and innovative.

Composition Nanotex - 79% polyester, 11% olefin, 10% nylon

Environmental Info Greenguard Certifications contributes towards LEED credits for low-emitting furniture and ensures compliance with Business and Institutional Furniture Manufacturers Association (BIFMA) X7.1 standard and BIFMA e3 credit 7.6.1.

Greenguard Gold Certification standard includes:

- * Health-based criteria for additional chemicals and requires lower total VOC emissions levels to help ensure that products are acceptable for use in environments like schools and healthcare facilities.
- * Products that also comply with requirements of the state of California's Department of Public Health (CDPH) "Standard Method for the Test and Evaluation of Volatile Organic Chemical Emissions from Indoor Sources Using Environmental Chambers, Version 1.2 (2017)" (also know as California Section 01350).
- * Products that are compliant with the BIFMA X7.1 standard and BIFMA e3 credits 7.6.1, 7.6.2, and 7.6.3.

Pattern Repeat Size 18.1cm V / 19cm H

Roll Size 137cm x Approx 55m - Available by the lineal metre

Abrasion 105,000+ Double Rubs (Wyzenbeek)

Fire Rating This product can be treated with a fire retardant that will ensure it meets Australian Standard 1530.3. Contact Baresque for details.

Lead Time

- 2-weeks (approx.) from Wednesday, subject to stock availability.
- Additional 1-week for Western Australia.
- Express delivery is available subject to a surcharge. Contact Baresque for details and pricing.

MARQUIS

Fabrics » Woven Fabrics

Care Instructions

Always use a clean, white, soft cloth.

Prepare a mixture of 1/3 Napisan and 2/3 Fab. Combine the mixture with water to make a paste about the consistency of soft margarine i.e. not too runny. Apply using a soft bristle brush. Leave for 10 minutes.

Use a brush and clean, warm water to remove the paste being sure to renew the water so that it remains clean.

Never use stiff bristles or wire brushes, as they may damage the fabric. To prevent soil build-up, frequent vacuuming is recommended.

Using a cloth to pat dry will help eliminate watermarks.

For more difficult stains, dampen a soft white cloth with a solution of household bleach (10% bleach / 90% water). Rub gently. Rinse with a water dampened cloth to remove bleach concentration.

Always test in an inconspicuous area first. If care instructions don't deliver the expected results, cease cleaning method immediately and contact Baresque for assistance.

Warranty

2-year warranty. Visit baresque.com.au/warranty for complete details.

Additional Comments

Nanotex soil and stain repellent finish.

Crypton Fabric

MARQUIS

Fabrics » Woven Fabrics

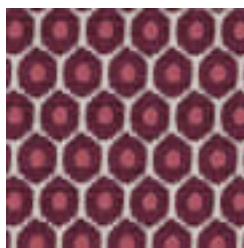
Colour & Finish Options



1011302 TIGER LILY



1011303
BUTTERSCOTCH



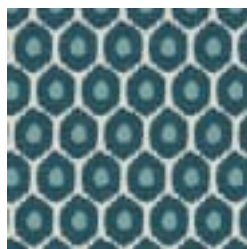
1011304
BOYSENBERRY



1011305 REDWOOD



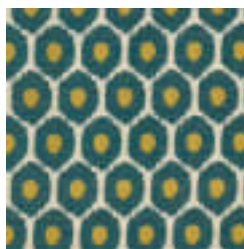
1011307 DELTA



1011308 AQUARIUS



1011309 CAYMAN



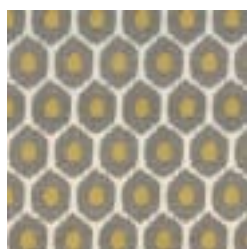
1011310 MERMAID



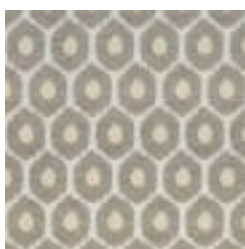
1011311 SUGARSNAP



1011312 SEAGRASS



1011313 MOONLIGHT



1011314 DRIFTWOOD



1011315 SHEARLING