

KALAHARI

Fabrics » Woven Fabrics

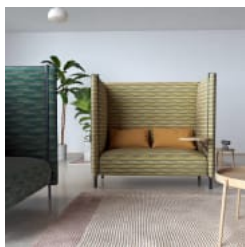


Brand: **CF Stinson**

Applications: **Upholstery**

KALAHARI

Fabrics » Woven Fabrics



kalahari_65866-lemon-
twist-65869-pacifica-
promo-1.jpg

KALAHARI

Fabrics » Woven Fabrics

Kalahari is a coated fabric with a horizontal half drop pattern that's available in 8 colourways. Suitable for indoor and outdoor. Bleach cleanable.

✓ **Bleach Cleanable**

✓ **Outdoor Suitable**

Composition 100% Bella-Dura polyolefin

Environmental Info

Greenguard Certifications contributes towards LEED credits for low-emitting furniture and ensures compliance with Business and Institutional Furniture Manufacturers Association (BIFMA) X7.1 standard and BIFMA e3 credit 7.6.1.

Greenguard Gold Certification standard includes:

* Health-based criteria for additional chemicals and requires lower total VOC emissions levels to help ensure that products are acceptable for use in environments like schools and healthcare facilities.

* Products that also comply with requirements of the state of California's Department of Public Health (CDPH) "Standard Method for the Test and Evaluation of Volatile Organic Chemical Emissions from Indoor Sources Using Environmental Chambers, Version 1.2 (2017)" (also known as California Section 01350).

* Products that are compliant with the BIFMA X7.1 standard and BIFMA e3 credits 7.6.1, 7.6.2, and 7.6.3.

Pattern Repeat Size 7.6cm V / 17.1cm H

Roll Size 137cm x Approx 55m - Available by the lineal metre

Abrasion 100,000+ Double Rubs (Wyzenbeek)

Fire Rating Tested in accordance with AS1530.3

Spread of Flame Index - 0

Smoke Developed Index - 5

Lead Time

- 2-weeks (approx.) from Wednesday, subject to stock availability.
- Additional 1-week for Western Australia.
- Express delivery is available subject to a surcharge. Contact Baresque for details and pricing.

Care Instructions

One of the best ways to keep fabrics looking good is to brush off dirt before it becomes embedded in the fabrics and wipe up spills or clean soon after a stain occurs. The quicker you clean spills and stains, the easier they can be to remove.

Avoid scrubbing or any other abrasive cleaning method. Never use stiff bristles or wire brushes, as they may damage the fabric.

Wipe material with a clean, soft cloth dampened with a mild solution of liquid detergent and warm water.

Repeat using only clean water, then dry with a lint free cloth or air dry.

Avoid using wax polishes, solvents or concentrated abrasives.

For more difficult stains, dampen a soft white cloth with a solution of household bleach (10% bleach / 90% water). Rub gently. Rinse with a water dampened cloth to remove bleach concentration.

Always test in an inconspicuous area first.

If care instructions don't deliver the expected results, cease cleaning method immediately and contact Baresque for assistance.

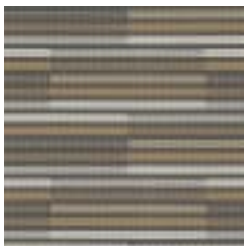
Warranty

2-year warranty. Visit baresque.com.au/warranty for complete details.

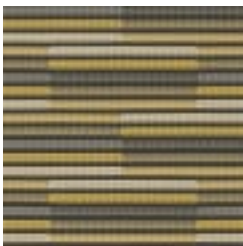
Colour & Finish Options

COLOURWAY CARD

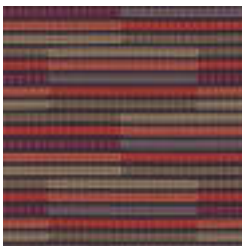
COLOURWAY CARD



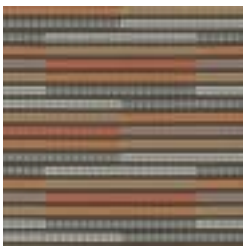
65865 RENEGADE



65866 LEMON TWIST



65867 CURRANT



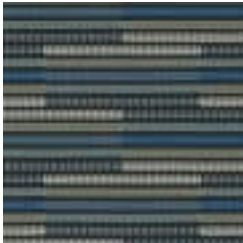
65868 TOAST



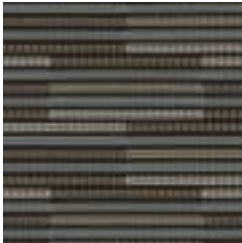
65869 PACIFICA



65870 SEAPORT



65871 TWILIGHT



65872 VESPER