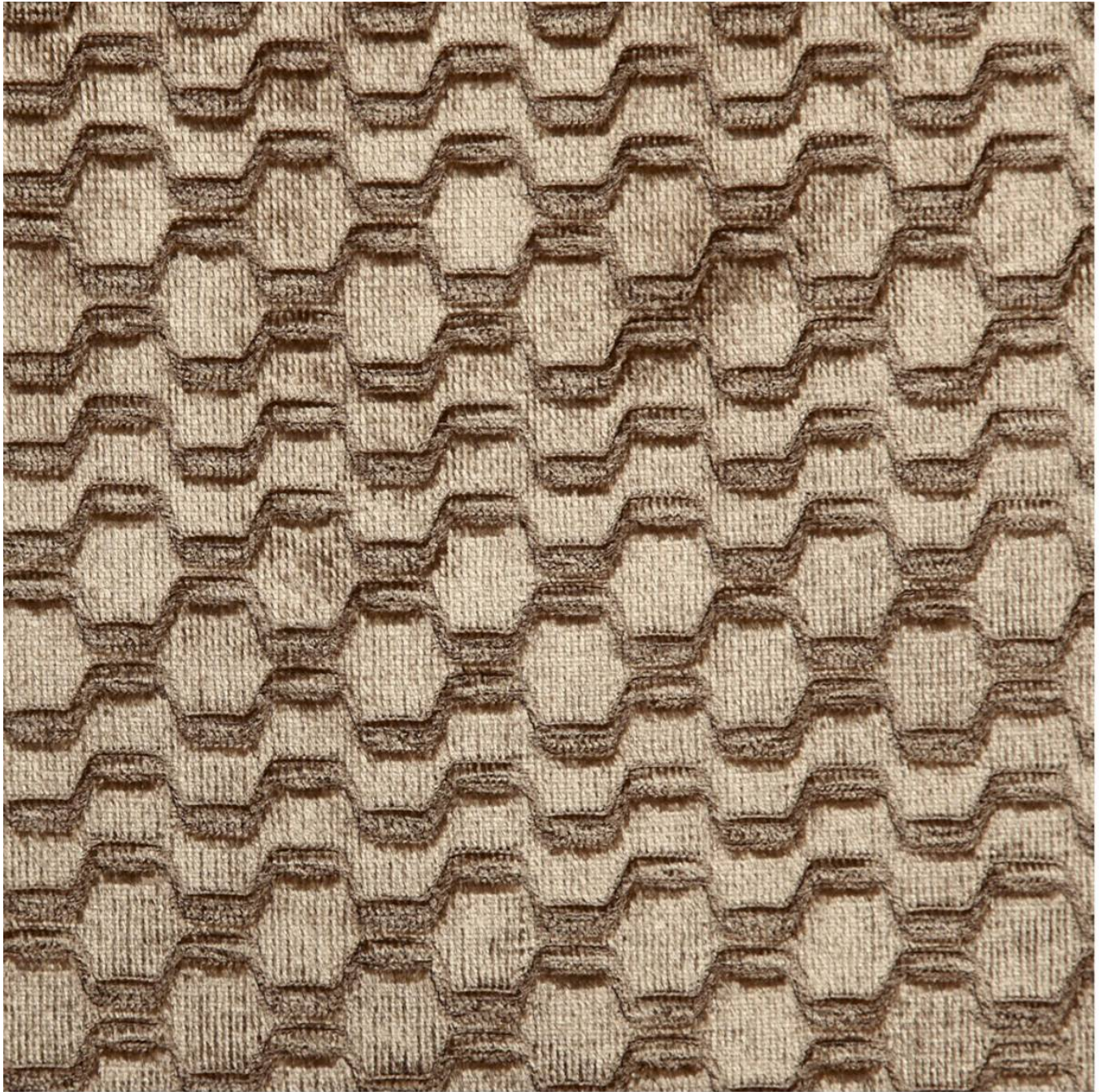


JEWEL VELVET

Fabrics » Woven Fabrics



Brand: **Panaz**

Applications: **Upholstery**

1300 306 399

info@baresque.com.au

baresque.com.au

1 of 3

JEWEL VELVET

Fabrics » Woven Fabrics

Jewel Velvet is a 140cm wide woven upholstery with an asymmetrical pattern that's available in 15 colourways. Suitable for indoors.

Composition	100% polyester
Pattern Repeat Size	N/A
Roll Size	140cm x N/A - Available by the lineal metre. MINIMUM ORDER 4 METRES
Abrasion	102,000 double rubs Wyzenbeek
Fire Rating	This product can be treated with a fire retardant that will ensure it meets Australian Standard 1530.3. Contact Baresque for details.
Lead Time	<ul style="list-style-type: none">• 2-weeks (approx.) from Wednesday, subject to stock availability.• Additional 1-week for Western Australia.• Express delivery is available subject to a surcharge. Contact Baresque for details and pricing.
Care Instructions	<p>Always use a clean, white, soft cloth.</p> <p>Clean in situ using a damp cloth and mild detergent. Sponge down afterwards with a clean, damp cloth.</p> <p>Using a cloth to pat dry will help eliminate watermarks.</p> <p>Ensure the pile is brushed back to its natural direction.</p> <p>Upholstered furniture should be regularly vacuumed or brushed with a soft nylon brush to remove grit or dust, which may damage the pile.</p> <p>Never use stiff bristles or wire brushes, as they may damage the fabric.</p> <p>Always test in an inconspicuous area first. If care instructions don't deliver the expected results, cease cleaning method immediately and contact Baresque for assistance.</p>
Warranty	2-year warranty. Visit baresque.com.au/warranty for complete details.

JEWEL VELVET

Fabrics » Woven Fabrics

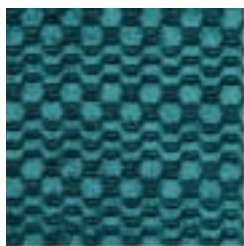
Colour & Finish Options



COLOURWAY CARD



111 PEACOCK



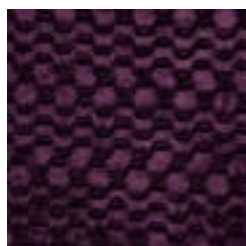
151 TEAL



205 SAGE GREEN



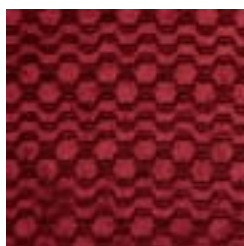
238 CITRUS



406 CLARET



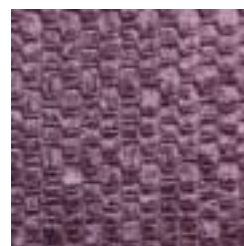
414 WINE



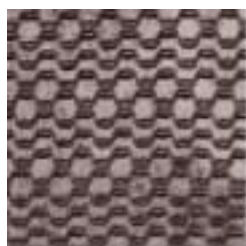
424 VERMILLION



505 PEARL



619 ROSEWOOD



703 MINK



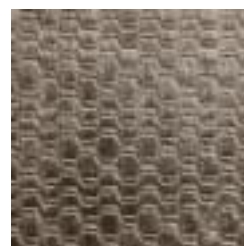
708 TRUFFLE



791 MOCHA



823 CHABLIS



858 COBBLE



877 OYSTER