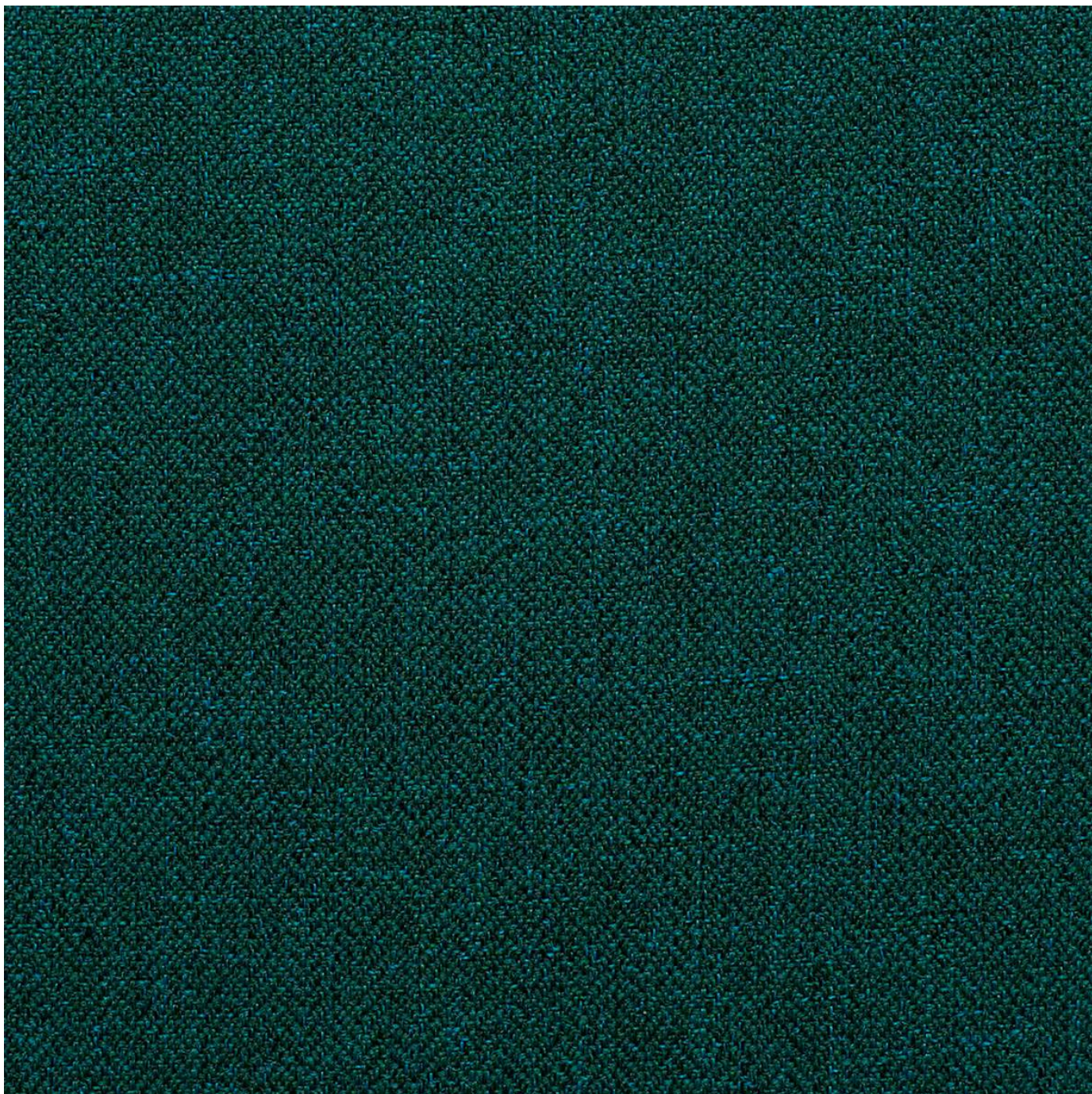


# ISLA PORTMAN

Fabrics » Woven Fabrics

---



Brand: **Panaz**

Applications: **Upholstery**

1300 306 399

[info@baresque.com.au](mailto:info@baresque.com.au)

[baresque.com.au](http://baresque.com.au)

1 of 4

# ISLA PORTMAN

Fabrics » Woven Fabrics

Isla is a 140cm woven upholstery with a micro herringbone pattern that's available in 11 plain colours. Suitable for indoor.

Description	Portman is a collection of 6 sophisticated designs conveying sartorial elegance and refinement. Including checks of varying scale and a complimentary plain with micro herringbone detail, Portman's colour combinations of stylish greys and charcoal through to classic navy, emerald and heather, evoke a sense of tradition with a hint of the outdoors.
Composition	100% polyester
Pattern Repeat Size	N/A
Roll Size	140cm x N/A - Available by the lineal metre. MINIMUM ORDER 4 METRES
Abrasion	100,000+ rubs Martindale
Fire Rating	This product can be treated with a fire retardant that will ensure it meets Australian Standard 1530.3. Contact Baresque for details.
Lead Time	<ul style="list-style-type: none"><li>• 2-weeks (approx.) from Wednesday, subject to stock availability.</li><li>• Additional 1-week for Western Australia.</li><li>• Express delivery is available subject to a surcharge. Contact Baresque for details and pricing.</li></ul>
Care Instructions	<p>Always use a clean, white, soft cloth.</p> <p>Clean in situ using a damp cloth and mild detergent. Sponge down afterwards with a clean, damp cloth.</p> <p>Using a cloth to pat dry will help eliminate watermarks.</p> <p>Ensure the pile is brushed back to its natural direction.</p> <p>Upholstered furniture should be regularly vacuumed or brushed with a soft nylon brush to remove grit or dust, which may damage the pile.</p> <p>Never use stiff bristles or wire brushes, as they may damage the fabric.</p> <p>Always test in an inconspicuous area first. If care instructions don't deliver the expected results, cease cleaning method immediately and contact Baresque for assistance.</p>

# ISLA PORTMAN

**Fabrics** » Woven Fabrics

---

## Warranty

2-year warranty. Visit [baresque.com.au/warranty](https://baresque.com.au/warranty) for complete details.

---



# ISLA PORTMAN

Fabrics » Woven Fabrics

## Colour & Finish Options

COLOURWAY  
CARD

COLOURWAY CARD

116 NAVY

201 JADE

204 MOSS

303 LEMON

400 RED

791 MOCHA

800 BEIGE

804 FAWN

901 SILVER

903 CHARCOAL

911 STEEL