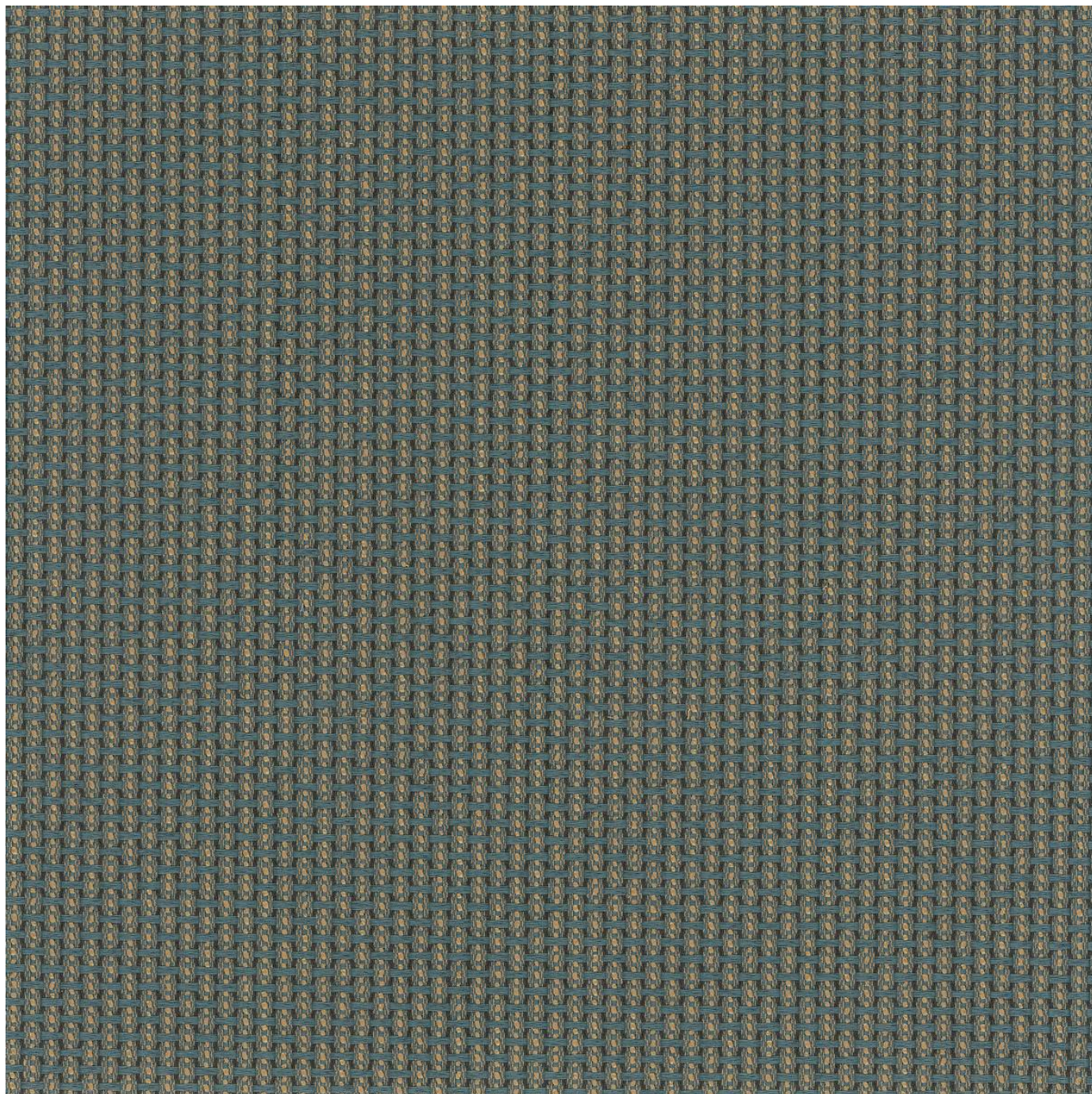


# HONEYCOMB

Fabrics » Woven Fabrics

---



Brand: **Crypton**

Applications: **Upholstery**

1300 306 399

[info@baresque.com.au](mailto:info@baresque.com.au)

[baresque.com.au](http://baresque.com.au)

1 of 4



# HONEYCOMB

Fabrics » Woven Fabrics

---



honeycomb\_promo-1.jpg

# HONEYCOMB

Fabrics » Woven Fabrics

Honeycomb is a 137cm wide woven upholstery with a railroaded pattern that's available in 7 colours. Suitable for indoors.

Description	CRYPTON is a permanent moisture, soil resistance and anti-microbial protection backing.
Composition	CRYPTON - 27% post consumer recycled polyester / 23% post industrial recycled polyester / 50% polyester
Pattern Repeat Size	2.5cm V/2.5cm H RAILROADED
Roll Size	137cm x 50m - Available by the lineal metre.
Abrasion	50,000 + double rubs Wyzenbeek
Fire Rating	This product can be treated with a fire retardant that will ensure it meets Australian Standard 1530.3. Contact Baresque for details.
Lead Time	<ul style="list-style-type: none"><li>• 2-weeks (approx.) from Wednesday, subject to stock availability.</li><li>• Additional 1-week for Western Australia.</li><li>• Express delivery is available subject to a surcharge. Contact Baresque for details and pricing.</li></ul>
Care Instructions	<p>Mix 5 parts water with 1 part of an enzyme laundry detergent to have a mixture that works well on all stains.</p> <p>Most liquid spills simply blot off the surface with a dry towel. If a stains remains, follow these simple steps:</p> <ol style="list-style-type: none"><li>1. Remove excess soil, and apply the soap mixture on the stained area</li><li>2. Allow solution to remain on stain for 1 minute</li><li>3. Blot up the stain with a dry, clean towel, rinse any remaining soap and blot the area again</li></ol> <p>Repeat these steps if a spot still remains. If agitation is necessary, spray the stained area and work the stain using a soft brush or edge of spoon from outside of spot toward the middle. Blot and rinse to remove any soap.</p>
Warranty	2-year warranty. Visit <a href="https://baresque.com.au/warranty">baresque.com.au/warranty</a> for complete details.

# HONEYCOMB

Fabrics » Woven Fabrics

## Colour & Finish Options



CG0141-06 AEGEAN



CG0141-01 BAGUETTE



CG0141-03 CEMENT



CG0141-08 HEDGE



CG0141-05 PEWTER



CG0141-09 PICANTE



CG0141-10 PLUM