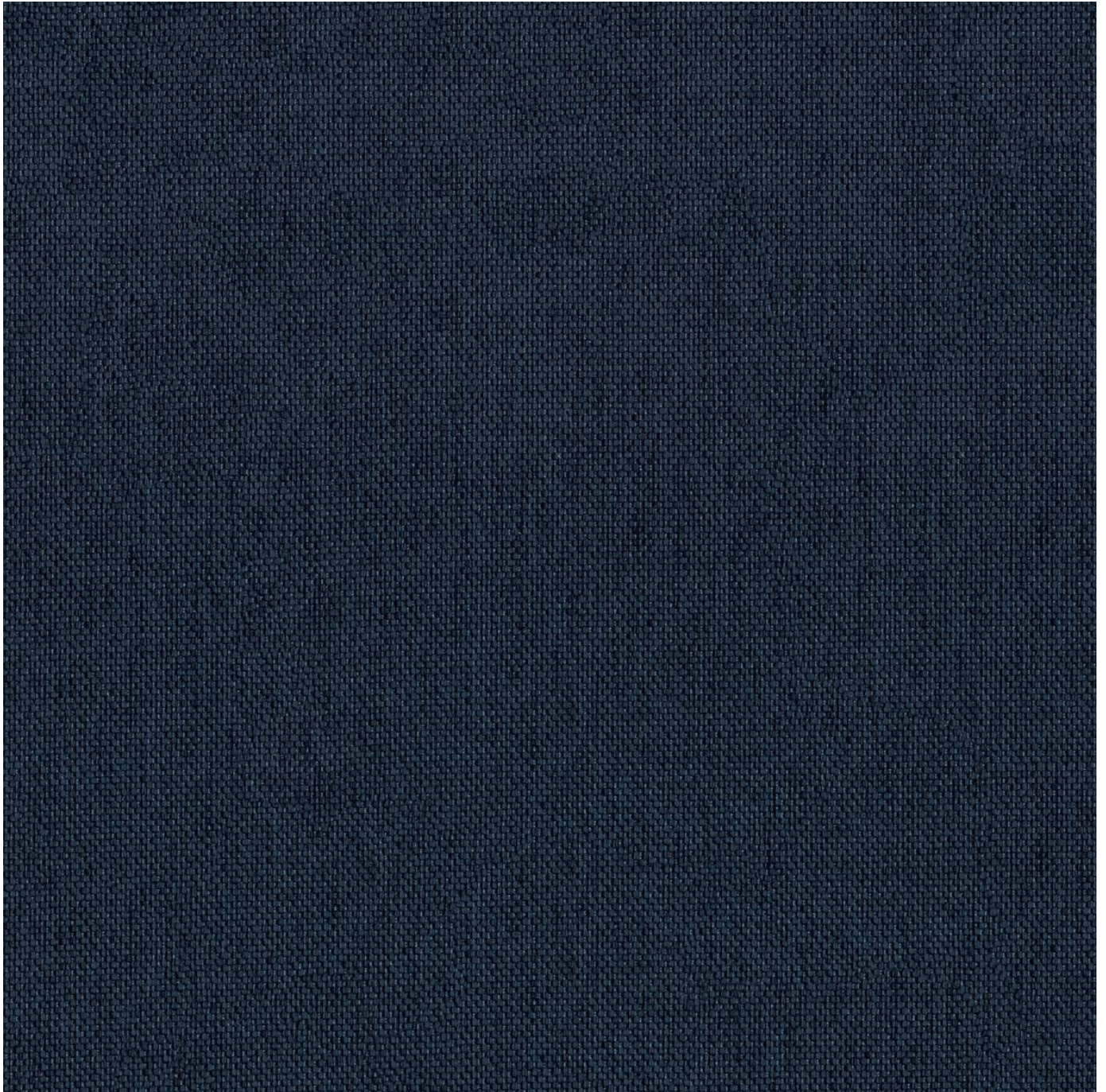


# ENDUREPEL FOUNDATION FUNDAMENTALS

Fabrics » Woven Fabrics

---



Brand: **Endurepel**

Applications: **Upholstery**

1300 306 399

[info@baresque.com.au](mailto:info@baresque.com.au)

[baresque.com.au](http://baresque.com.au)

1 of 4

# ENDUREPEL FOUNDATION FUNDAMENTALS

Fabrics » Woven Fabrics

Endurepel Foundation is a 144cm wide woven upholstery that's available in 7 plain colours. Easy to clean, anti-bacterial and liquid repellent.

✓ **Moisture Repellant**

✓ **Anti-Bacterial**

✓ **Anti-Microbial**

## Description

The Fundamentals range features 75 coordinating textures and semi-plains that come standard with Endurepel Shield performance finish to repel liquid and make the upholsteries anti-microbial and anti-bacterial. Add Endurepel Barrier for a complete moisture barrier.

## Composition

Endurepel Shield - 100% polyester with an acrylic kiss coat backing Add Endurepel Barrier for a complete moisture barrier.

## Pattern Repeat Size

N/A

## Roll Size

144cm x Approx 45m - 55m - Available by the lineal metre.

## Abrasion

100,000+ Double Rubs (Wyzenbeek)

## Fire Rating

Tested in accordance with AS1530.3

Spread of Flame Index - 0

Smoke Developed Index - 5

## Lead Time

- 3-weeks (approx) from Wednesday subject to stock availability.
- Additional 1-week for Western Australia.
- Additional 2 weeks for Endurepel Barrier.
- Express delivery is available subject to a surcharge. Contact Baresque for details and pricing.

# ENDUREPEL FOUNDATION FUNDAMENTALS

Fabrics » Woven Fabrics

---

## Care Instructions

Always use a clean, white, soft cloth.

Clean in situ using a damp cloth and mild detergent. Sponge down afterwards with a clean, damp cloth.

Using a cloth to pat dry will help eliminate watermarks.

Ensure the pile is brushed back to its natural direction.

Upholstered furniture should be regularly vacuumed or brushed with a soft nylon brush to remove grit or dust, which may damage the pile.

Never use stiff bristles or wire brushes, as they may damage the fabric.

Always test in an inconspicuous area first. If care instructions don't deliver the expected results, cease cleaning method immediately and contact Baresque for assistance.

---

## Warranty

2-year warranty. Visit [baresque.com.au/warranty](https://baresque.com.au/warranty) for complete details.

---

## Additional Comments

Add Endurepel Barrier for full Moisture Barrier

---

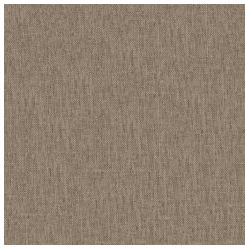


# ENDUREPEL FOUNDATION FUNDAMENTALS

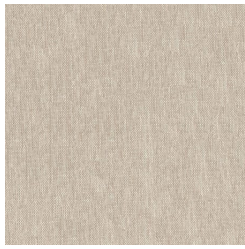
Fabrics » Woven Fabrics

---

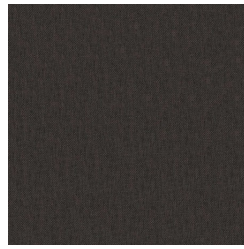
## Colour & Finish Options



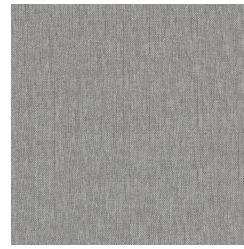
67 FAWN



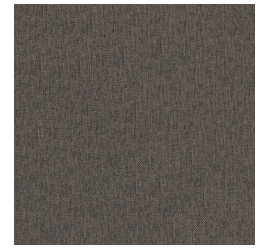
608 LINEN



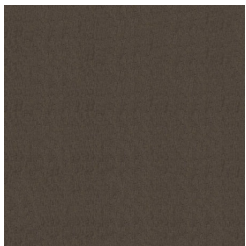
808 BEAVER



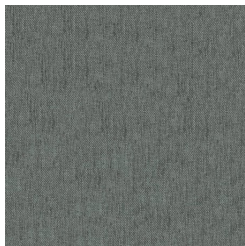
905 WIND



908 MUD



8009 COFFEE



9003 STEEL