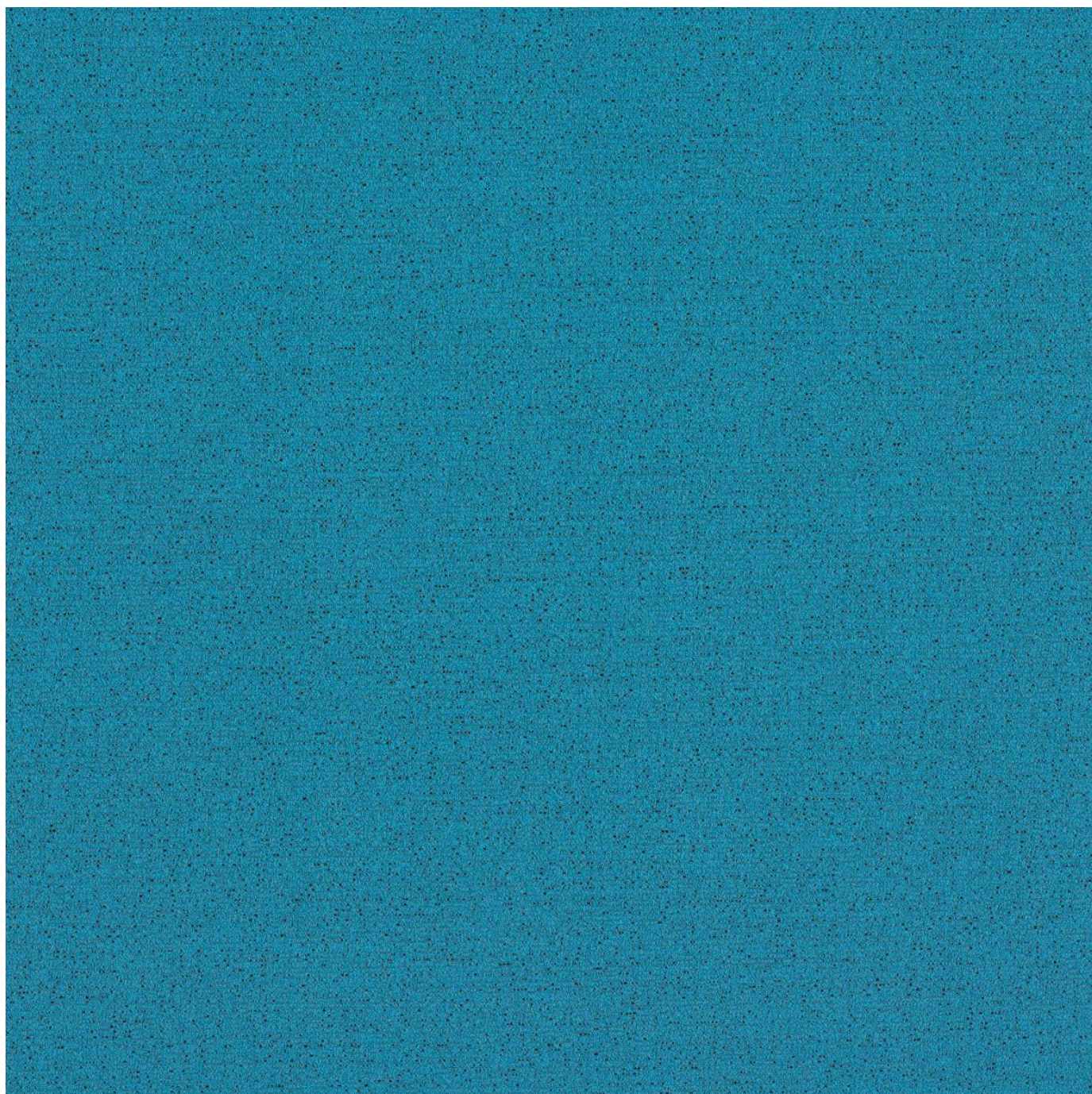


COLOR STORY BLUES

Fabrics » Woven Fabrics



Brand: **CF Stinson**

Applications: **Upholstery**

1300 306 399

info@baresque.com.au

baresque.com.au

1 of 4

COLOR STORY BLUES

Fabrics » Woven Fabrics

Color Story-Blues is a 137cm woven upholstery of simple texture patterns that's available in a range of 16 hues of blue.

Description A designer's dream, Color Story is a new collection of simple textures presented by colour. From beautiful bright blues to soft natural greens, hot reds and summery yellows, Colour Story will quickly and easily lead you to the exact colour you need for your next project

Composition

Ace: 80% Post Industrial Recycled Polyester, 20% Post Consumer Recycled Polyester

Blip: 70% Polyester, 20% Eco-Intelligent Polyester, 6% Post Industrial Recycled Polyester, 4% Post Consumer Recycled Polyester

Bryant Park: 100% Polyester

Highlight: 70% Post Consumer Recycled Polyester, 30% Polyester

Inside Track: 56% Polyester, 32% Post Consumer Recycled Polyester, 12% Post Industrial Recycled Polyester

Refraction: 70% Post Consumer Recycled Polyester, 30% Polyester

Shift: 75% Post Consumer Recycled Polyester, 25% Polyester

Environmental Info

Greenguard Certifications contributes towards LEED credits for low-emitting furniture and ensures compliance with Business and Institutional Furniture Manufacturers Association (BIFMA) X7.1 standard and BIFMA e3 credit 7.6.1.

Greenguard Gold Certification standard includes:

- * Health-based criteria for additional chemicals and requires lower total VOC emissions levels to help ensure that products are acceptable for use in environments like schools and healthcare facilities.
- * Products that also comply with requirements of the state of California's Department of Public Health (CDPH) "Standard Method for the Test and Evaluation of Volatile Organic Chemical Emissions from Indoor Sources Using Environmental Chambers, Version 1.2 (2017)" (also know as California Section 01350).
- * Products that are compliant with the BIFMA X7.1 standard and BIFMA e3 credits 7.6.1, 7.6.2, and 7.6.3.

Roll Size 137cm x Approx 50m - Available by the lineal metre

Abrasion Ace: 1,000,000 Blip: 100,000 Bryant Park: 100,000 Highlight: 100,000 Inside Track; 140,000 Refraction: 100,000 Shift: 100,000

COLOR STORY BLUES

Fabrics » Woven Fabrics

Fire Rating Tested in accordance with AS1530.3
Spread of Flame Index - 0
Smoke Developed Index - 5

Lead Time

- 2-weeks (approx.) from Wednesday, subject to stock availability.
- Additional 1-week for Western Australia.
- Express delivery is available subject to a surcharge. Contact Baresque for details and pricing.

Care Instructions

Always use a clean, white, soft cloth.

Clean in situ using a damp cloth and mild detergent. Sponge down afterwards with a clean, damp cloth.

Using a cloth to pat dry will help eliminate watermarks.

Ensure the pile is brushed back to its natural direction.

Upholstered furniture should be regularly vacuumed or brushed with a soft nylon brush to remove grit or dust, which may damage the pile.

Never use stiff bristles or wire brushes, as they may damage the fabric.

Always test in an inconspicuous area first. If care instructions don't deliver the expected results, cease cleaning method immediately and contact Baresque for assistance.

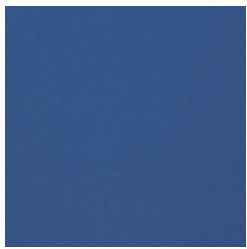
Warranty 2-year warranty. Visit baresque.com.au/warranty for complete details.

Additional Comments All Color Story products are treated with a stain resistant finish

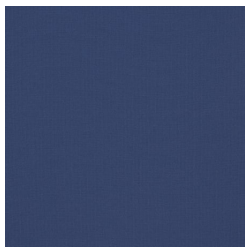
COLOR STORY BLUES

Fabrics » Woven Fabrics

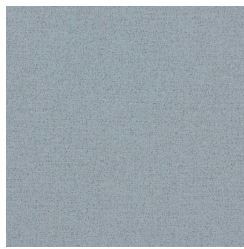
Colour & Finish Options



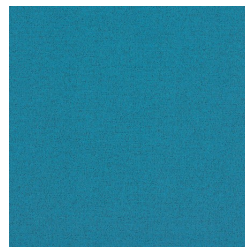
63634 INSIDE TRACK
ROYAL



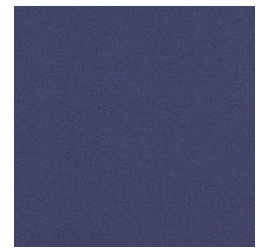
63638 INSIDE TRACK
INK



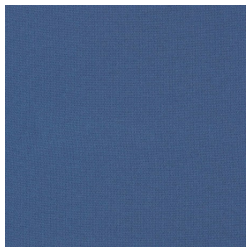
64242 BLIP
MOONSTONE



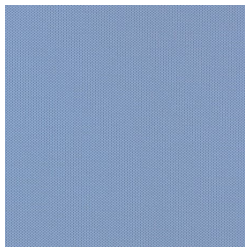
64246 BLIP MAUI



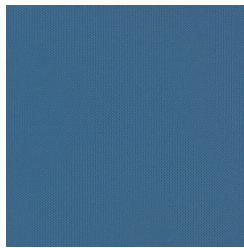
64248 BLIP
SUPERHERO



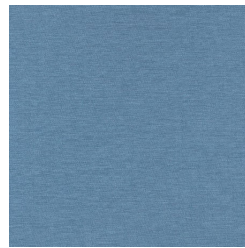
64467 HIGHLIGHT
LIDO



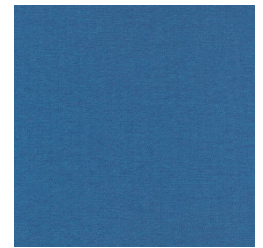
64478 REFRACTION
DELFT



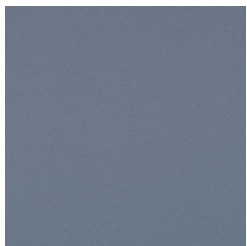
64482 REFRACTION
COSMOS



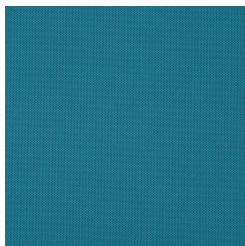
64496 SHIFT
NANTUCKET



64500 SHIFT BLUE
AGATE



6533 ACE WATER



6553 BRYANT PARK
NILE



6558 BRYANT PARK
SAXON BLUE



6563 BRYANT PARK
NIGHT SHADOW