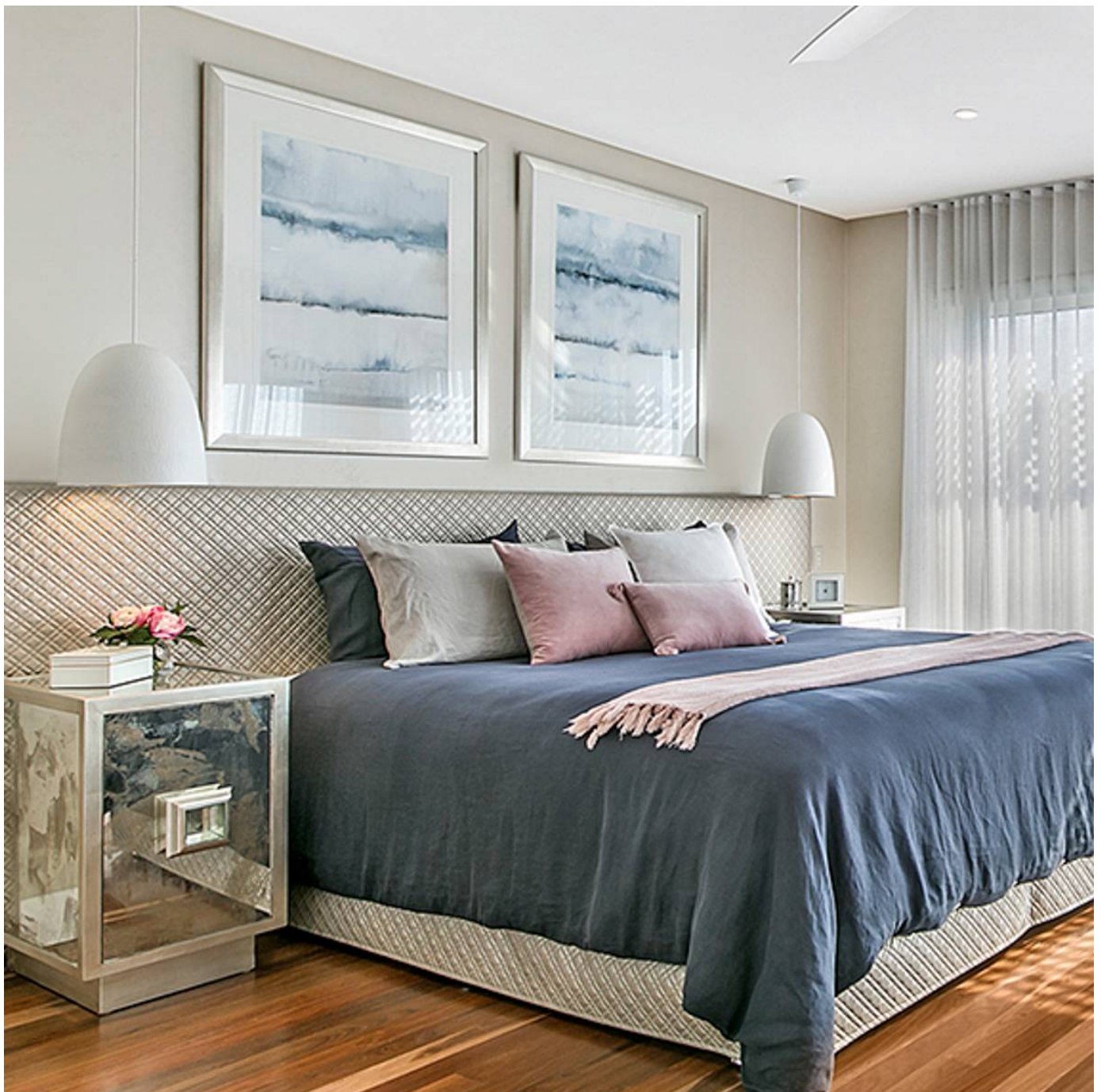


CHATEAUX DIMENSIONAL

Fabrics » Vinyl and Faux Leather Fabrics



Brand: **Concertex**

Collections: **Dimensional**

Applications: **Upholstery**

1300 306 399

info@baresque.com.au

baresque.com.au

1 of 4

CHATEAUX DIMENSIONAL

Fabrics » Vinyl and Faux Leather Fabrics

Chateaux is a 132cm wide padded faux leather impervious to moisture that can be cleaned with just a dry towel. available in 9 colours

✓ **Bleach Cleanable**

✓ **Moisture Barrier**

✓ **Anti-Bacterial**

Description	Perfect for bedheads or upholstered booth seating, DIMENSIONAL is a revolutionary, padded faux leather created by an ultrasonic sealing process. It is impervious to moisture and has extreme depth for 3 dimensional look while flexible enough for easy upholstering. The faux leather surface passes over 100,000 double rubs and contains a built-in graffiti-free layer for stain-free atmosphere. Stains and ballpoint pen marks can easily be wiped away with just a dry towel. Bleach solution can also be used.
-------------	--

Composition	100% polyurethane on a 100% polyester backing
-------------	---

Environmental Info	PVC free Phthalate Free DMF Free No added fire retardant Anti-Bacterial Healthier Hospitals compliant Complies with CAL01351
--------------------	--

Pattern Repeat Size	5.4cm H x 5.4cm V
---------------------	-------------------

Roll Size	137cm x Approx 55m - Available by the lineal metre
-----------	--

Abrasion	100,000 + double rubs Wyzenbeek
----------	---------------------------------

Fire Rating	Tested in accordance with AS1530.3 Spread of Flame Index - 0 Smoke Developed Index - 5
-------------	--

Lead Time	<ul style="list-style-type: none">• 2-weeks (approx.) from Wednesday, subject to stock availability.• Additional 1-week for Western Australia.• Express delivery is available subject to a surcharge. Contact Baresque for details and pricing.
-----------	---

CHATEAUX DIMENSIONAL

Fabrics » Vinyl and Faux Leather Fabrics

Care Instructions

Most stains and ballpoint pen marks can be removed with a clean dry towel.

Wipe material with a clean, soft cloth dampened with a mild solution of liquid detergent and warm water. Repeat using only clean water, then dry with a lint free cloth.

Avoid using wax polishes, solvents or concentrated abrasives.

For more difficult stains, dampen a soft white cloth with a solution of household bleach (5:1). Rub gently. Rinse with a water dampened cloth to remove bleach concentration.

Always test in an inconspicuous area first. If care instructions don't deliver the expected results, cease cleaning method immediately and contact Baresque for assistance.

Warranty

2-year warranty. Visit baresque.com.au/warranty for complete details.

Additional Comments

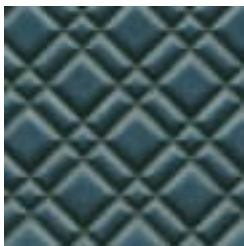
Chateaux should only be stapled. Do not use adhesives on this product as adhesives seeping into the padding will deform the natural shape.

CHATEAUX DIMENSIONAL

Fabrics » Vinyl and Faux Leather Fabrics

Colour & Finish Options

COLOURWAY
CARD



COBALT



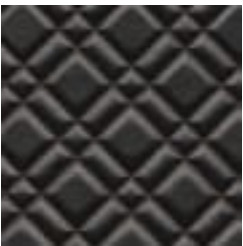
COCOA



ETHIOPIA



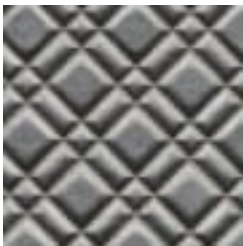
HAZE



MIDNIGHT



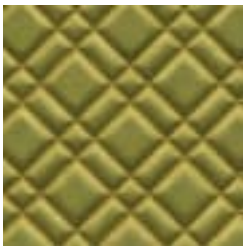
NICKEL



PEWTER



SHELL



SPRING