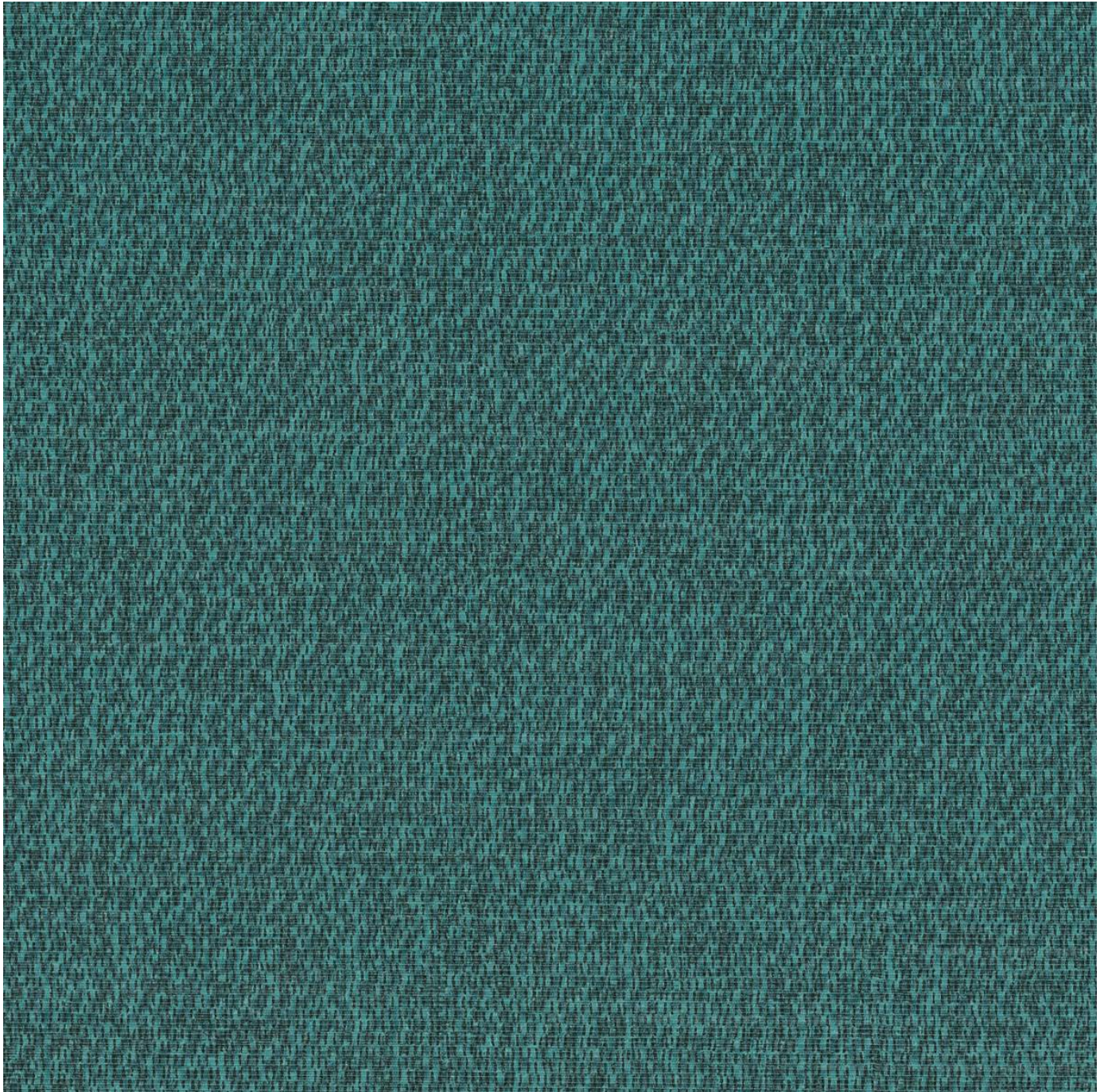


# CARLISLE

**Fabrics** » Vinyl and Faux Leather Fabrics

---



Brand: **CF Stinson**

Applications: **Upholstery**

1300 306 399

[info@baresque.com.au](mailto:info@baresque.com.au)

[baresque.com.au](http://baresque.com.au)

1 of 4

# CARLISLE

**Fabrics** » Vinyl and Faux Leather Fabrics

Carlisle is a 137cm wide vinyl coated fabric that's available in 8 colours. Anti-microbial, anti-bacterial and easy to clean with warm water.

✓ **Bleach Cleanable**

✓ **Moisture Barrier**

✓ **Anti-Bacterial**

✓ **Anti-Microbial**

Composition	Vinyl face on a knitted polyester backing
Environmental Info	<p>Greenguard Certifications contributes towards LEED credits for low-emitting furniture.</p> <p>Compliant with Business and Institutional Furniture Manufacturers Association (BIFMA) X7.1 standard and BIFMA e3 credit 7.6.1.</p>
Pattern Repeat Size	N/A
Roll Size	140cm x Approx 45m - 55m - Available by the lineal metre.
Abrasion	Exceeds 1,300,000 double rubs (Wyzenbeek)
Fire Rating	<p>Tested in accordance with AS1530.3</p> <p>Spread of Flame Index - 0</p> <p>Smoke Developed Index - 5</p>
Lead Time	<ul style="list-style-type: none"><li>• 2-weeks (approx.) from Wednesday, subject to stock availability.</li><li>• Additional 1-week for Western Australia.</li><li>• Express delivery is available subject to a surcharge. Contact Baresque for details and pricing.</li></ul>



# CARLISLE

Fabrics » Vinyl and Faux Leather Fabrics

---

## Care Instructions

Use cloth with any of the following in preferred order of use:

- 1: Clear warm water
- 2: Mild solution of liquid detergent and warm water
- 3: Isopropyl Alcohol (a.k.a. rubbing alcohol)

Remove any detergent with a clean, damp cloth. Gently pat dry.

For more difficult stains, dampen a soft white cloth with a solution of household bleach (10% bleach / 90% water). Rub gently. Rinse with a water dampened cloth to remove bleach concentration.

Do not use solvent based or concentrated abrasive cleaning agents, lacquer thinners or nail polish remover as these may cause discolouration over a period of time.

Always test in an inconspicuous area first.

If care instructions don't deliver the expected results, cease cleaning method immediately and contact Baresque for assistance.

---

## Warranty

2-year warranty. Visit [baresque.com.au/warranty](https://baresque.com.au/warranty) for complete details.

---

# CARLISLE

**Fabrics** » Vinyl and Faux Leather Fabrics

---

## Colour & Finish Options



CRL 35 AMBERGLOW



CRL 37 CHARCOAL



CRL 31 DELPHINIUM



CRL 34 JASPER



CRL 33 MACADAMIA



CRL 32 MOREL



CRL 30 SURF



CRL 36 TRUFFLE