

# LITHIC

Wallcoverings » Commercial Wallcoverings



Brand: **Versa**

Applications: **Walls**

# LITHIC

Wallcoverings » Commercial Wallcoverings

Lithic is a 137cm wide commercial wallcovering with a linear motif that creates movement. Available in 12 colours. PVC and heavy metals free.

✓ Bleach Cleanable

✓ Environmentally Friendly

✓ Phthalate Free

✓ PVC-Free

Description	Versa's PVC-FREE range offers you the same look, feel and performance as luxury commercial vinyl wallcoverings. A companion to Lithic Texture, Lithic offers a signature design of intersecting curves atop of multicolour silk. The linear motif creates an elegant movement on the wall that brings to mind a clarity of natural shapes such as leaves or undulating waves.
-------------	---

Composition	Olefin on a fabric backing 20oz (452 g/m <sup>2</sup> )
-------------	---

Environmental Info	<p>Versa's range of PVC wallcoverings is manufactured from 20% recycled content.</p> <ul style="list-style-type: none"><li>-Free of antimicrobials</li><li>- Phthalate free</li><li>- Heavy metal free</li><li>-Low VOC emitting</li><li>- CA 01350 complaint</li><li>-Free of toxic flame retardants</li><li>- Formaldehyde free</li><li>- BPA Free</li></ul>
--------------------	--

Pattern Repeat Size	N/A
---------------------	-----

Roll Size	137cm wide x 27.4m - Available by the lineal metre
-----------	--

Fire Rating	<p>Tested in accordance with AS ISO 9705 2003 for the purpose of determining the Group Number classification as required by the Building Code of Australia for the control of fire spread on interior wall and ceiling linings.</p> <p>Classification - Group 3 Specific Extinction - Less than 250m<sup>2</sup>/kg</p>
-------------	---

Lead Time	<ul style="list-style-type: none"><li>• 2-weeks (approx.) from Wednesday, subject to stock availability.</li><li>• Additional 1-week for Western Australia.</li><li>• Express delivery is available subject to a surcharge. Contact Baresque for details and pricing.</li></ul>
Suggested Installation	<p>Reverse hang / overlap and double cut.</p> <p>Baresque recommends and supply Roman brand adhesives and primers.</p>
Care Instructions	<p>Always use a clean, white, soft cloth.</p> <p>Use cloth with any of the following in preferred order of use:</p> <ol style="list-style-type: none"><li>1: Clear warm water</li><li>2: Mild solution of liquid detergent and warm water</li><li>3: Isopropyl Alcohol (a.k.a. rubbing alcohol)</li></ol> <p>Remove any detergent with a clean, damp cloth. Gently pat dry.</p> <p>For more difficult stains, dampen a soft white cloth with a solution of household bleach (10% bleach / 90% water). Rub gently.</p> <p>Rinse with a water dampened cloth to remove bleach concentration.</p> <p>DO NOT USE solvent based or concentrated abrasive cleaning agents, lacquer thinners, nail polish remover as these may cause discolouration over a period of time.</p> <p>Always test in an inconspicuous area first. If care instructions don't deliver the expected results, cease cleaning method immediately and contact Baresque for assistance.</p>
Warranty	<p>5-year warranty. Visit <a href="https://baresque.com.au/warranty">baresque.com.au/warranty</a> for complete details.</p>

## Colour & Finish Options



AVF12-030 POLAR



AVF12-073 CHIFFON



AVF12-156 COASTAL



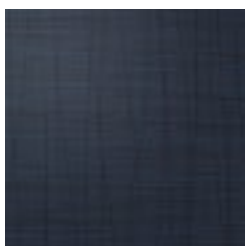
AVF12-189 BUFF



AVF12-347 PACIFIC



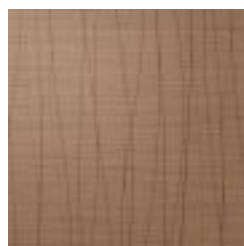
AVF12-359 HORIZON



AVF12-361 ADMIRAL



AVF12-564 SMOKE



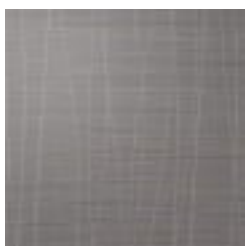
AVF12-615 TAWNY



AVF12-805 GRAVITY



AVF12-812 CEMENT



AVF12-827 STORM  
GREY