

CAPE TOWN

Wallcoverings » Commercial Wallcoverings



Brand: **Versa**

Applications: **Walls**

CAPE TOWN

Wallcoverings » Commercial Wallcoverings

Cape Town is a 137cm wide wallcovering with a classic herringbone motif that's available in 15 colours. Cleanable with warm water and detergent.

✓ Bleach Cleanable

✓ Environmentally Friendly

✓ Phthalate Free

✓ PVC-Free

Description	Versa's PVC-FREE range offers you the same look, feel and performance as luxury commercial vinyl wallcoverings. Reminiscent of a classic herringbone motif, or chevron, with a stylized twist Cape Town has a unique movement and irregularity. The contemporary colour palette offers a diverse mix that spans clean crisp white and black to deep rich colours.
Composition	Olefin on a fabric backing 20oz (452 g/m ²)
Environmental Info	<p>Versa's range of PVC wallcoverings is manufactured from 20% recycled content.</p> <ul style="list-style-type: none">-Free of antimicrobials- Phthalate free- Heavy metal free-Low VOC emitting- CA 01350 complaint-Free of toxic flame retardants- Formaldehyde free- BPA Free
Pattern Repeat Size	45.7cm V / 44.9cm H
Roll Size	137cm wide x 27.4m - Available by the lineal metre
Fire Rating	<p>Tested in accordance with AS ISO 9705 2003 for the purpose of determining the Group Number classification as required by the Building Code of Australia for the control of fire spread on interior wall and ceiling linings.</p> <p>Classification - Group 3 Specific Extinction - Less than 250m²/kg</p>

CAPE TOWN

Wallcoverings » Commercial Wallcoverings

Lead Time	<ul style="list-style-type: none">• 2-weeks (approx.) from Wednesday, subject to stock availability.• Additional 1-week for Western Australia.• Express delivery is available subject to a surcharge. Contact Baresque for details and pricing.
-----------	---------------------------------------------------------------------------------------------------------------------------------------------------------------------------------------------------------------------------------------------------------------------------------

Suggested Installation	<p>Reverse hang / overlap and double cut.</p> <p>Baresque recommends and supply Roman brand adhesives and primers.</p>
------------------------	------------------------------------------------------------------------------------------------------------------------

Care Instructions	<p>Always use a clean, white, soft cloth.</p> <p>Use cloth with any of the following in preferred order of use:</p> <ol style="list-style-type: none">1: Clear warm water2: Mild solution of liquid detergent and warm water3: Isopropyl Alcohol (a.k.a. rubbing alcohol) <p>Remove any detergent with a clean, damp cloth. Gently pat dry.</p> <p>For more difficult stains, dampen a soft white cloth with a solution of household bleach (10% bleach / 90% water). Rub gently.</p> <p>Rinse with a water dampened cloth to remove bleach concentration.</p> <p>DO NOT USE solvent based or concentrated abrasive cleaning agents, lacquer thinners, nail polish remover as these may cause discolouration over a period of time.</p> <p>Always test in an inconspicuous area first. If care instructions don't deliver the expected results, cease cleaning method immediately and contact Baresque for assistance.</p>
-------------------	------------------------------------------------------------------------------------------------------------------------------------------------------------------------------------------------------------------------------------------------------------------------------------------------------------------------------------------------------------------------------------------------------------------------------------------------------------------------------------------------------------------------------------------------------------------------------------------------------------------------------------------------------------------------------------------------------------------------------------------------------------------------------------------------------------------------------------------------------------------------------------------------------------------------------------------------------------

Warranty	5-year warranty. Visit baresque.com.au/warranty for complete details.
----------	----------------------------------------------------------------------------------------------------------------------

CAPE TOWN

Wallcoverings » Commercial Wallcoverings

Colour & Finish Options



AVF02-024 GOOD
HOPE



AVF02-053 NORTH
END



AVF02-125 CLIFTON
BEACH



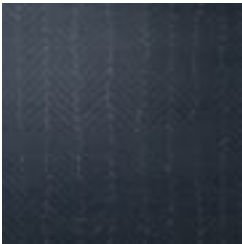
AVF02-134 FENWAY



AVF02-186 SIGNAL
HILL



AVF02-216
HELDERBERG



AVF02-351 GORDON'S
BAY



AVF02-498
SOMERSET



AVF02-502
CAMBRIDGE



AVF02-508 TABLE
MOUNTAIN



AVF02-531 CITY BOWL



AVF02-538
METRORAIL



AVF02-547 ROBBEN
ISLAND



AVF02-562 PONTE
CITY



AVF02-579 HILLBROW
TOWER



AVF02-590 ACORN
STREET