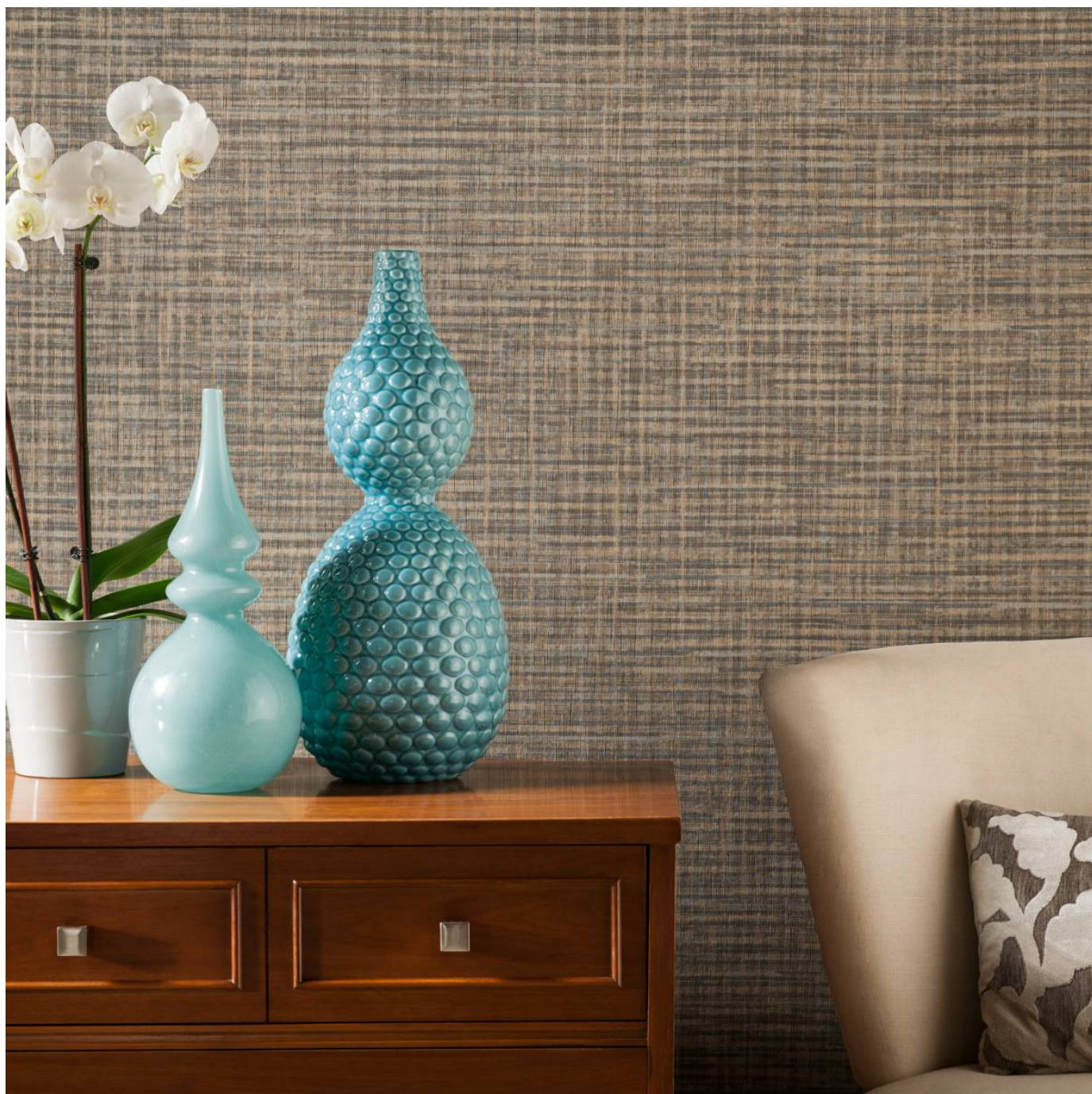


# REMIX

Wallcoverings » Commercial Wallcoverings



Brand: **Symphony**

Applications: **Walls**

1300 306 399

[info@baresque.com.au](mailto:info@baresque.com.au)

[baresque.com.au](http://baresque.com.au)

1 of 4

# REMIX

Wallcoverings » Commercial Wallcoverings

Remix is a 137cm wide commercial wallcovering in traditional stripes and a rustic splash of texture that's available in 18 colourways.

✓ **Bleach Cleanable**

Description	Traditional stripes made modern with a rustic splash of texture. Some colours of Remix are also available in matching P3TEC - a new generation of Advanced Wall Protection. Check out the Additional Comments below or the DOWNLOADS tab for more details.
Composition	Vinyl face on a woven backing Equivalent to 20oz (452 g/m <sup>2</sup> )
Environmental Info	<p>Formaldehyde free</p> <p>Heavy metals free</p> <p>Perfluorooctanoic acid free</p> <p>No solvent inks</p> <p>Low VOC emissions. Any VOCs dissipate quickly (faster than paint) through normal ventilation and have no recognized adverse impact on indoor air quality.</p> <p>Durability means products do not need to be replaced regularly due to wear and tear and being cleanable, vinyl products are ideal for helping keep commercial environments clean of bacteria.</p> <p>Baresque will only deal with vinyl manufacturers that comply with applicable state and federal regulations, provide a factory that is safe and clean for its employees to work in, recycle scrap and inks during the manufacturing process to minimize waste related to production.</p>
Pattern Repeat Size	N/A
Roll Size	137cm wide x 27.4m - Available by the lineal metre
Fire Rating	<p>Tested in accordance with AS ISO 9705 2003 for the purpose of determining the Group Number classification as required by the Building Code of Australia for the control of fire spread on interior wall and ceiling linings.</p> <p>The result achieved was: Classification - Group 2 Specific Extinction - Less than 250m<sup>2</sup>/kg</p>

# REMIX

Wallcoverings » Commercial Wallcoverings

---

Lead Time	<ul style="list-style-type: none"><li>• 2-weeks (approx.) from Wednesday, subject to stock availability.</li><li>• Additional 1-week for Western Australia.</li><li>• Express delivery is available subject to a surcharge. Contact Baresque for details and pricing.</li></ul>
-----------	---

---

Suggested Installation	<p>Reverse hang / overlap and double cut.</p> <p>Baresque recommends and supply Roman brand adhesives and primers.</p>
------------------------	--

---

Care Instructions	<p>Use cloth with any of the following in preferred order of use:</p> <p>1: Clear warm water</p> <p>2: Mild solution of liquid detergent and warm water</p> <p>3: Isopropyl Alcohol (a.k.a. rubbing alcohol)</p> <p>Remove any detergent with a clean, damp cloth. Gently pat dry.</p> <p>For more difficult stains, dampen a soft white cloth with a solution of household bleach (10% bleach / 90% water). Rub gently.</p> <p>Rinse with a water dampened cloth to remove bleach concentration.</p> <p>Do not use solvent based or concentrated abrasive cleaning agents, lacquer thinners or nail polish remover as these may cause discolouration over a period of time.</p> <p>Always test in an inconspicuous area first.</p> <p>If care instructions don't deliver the expected results, cease cleaning method immediately and contact Baresque for assistance.</p>
-------------------	--

---

Warranty	5-year warranty. Visit <a href="https://www.baresque.com.au/warranty">baresque.com.au/warranty</a> for complete details.
----------	--

---

Additional Comments	Remix is also available in matching P3TEC design Tic-Tac Texture - a new generation of Advanced Wall Protection. Cross over colours are AZ52826, 28, 29, 30, 31, 32, 33, 34, 35, 36, 39, 42
---------------------	---

---

## Colour & Finish Options

### COLOURWAY CARD



AZ52825 LIME KEY



AZ52826 COUNTRY CORD



AZ52827 BLACK METAL



AZ52828 MISTY MELODY



AZ52829 BRASS



AZ52830 GOLDEN GUITAR



AZ52831 ECRU ENSEMBLE



AZ52832 NEUTRAL NOT



AZ52833 TAUPE TEMPO



AZ52834 AIR DRUMS



AZ52835 ROCK BAND



AZ52836 SILVER SONATA



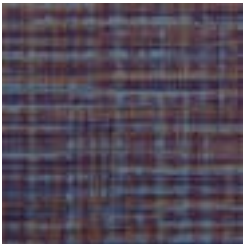
AZ52837 SOFT SONG



AZ52838 HAZY HARMONY



AZ52839 DARK DUET



AZ52840 RHYTHM BLUE



AZ52841 PURPLE PIANO



AZ52842 NIGHT VOICE