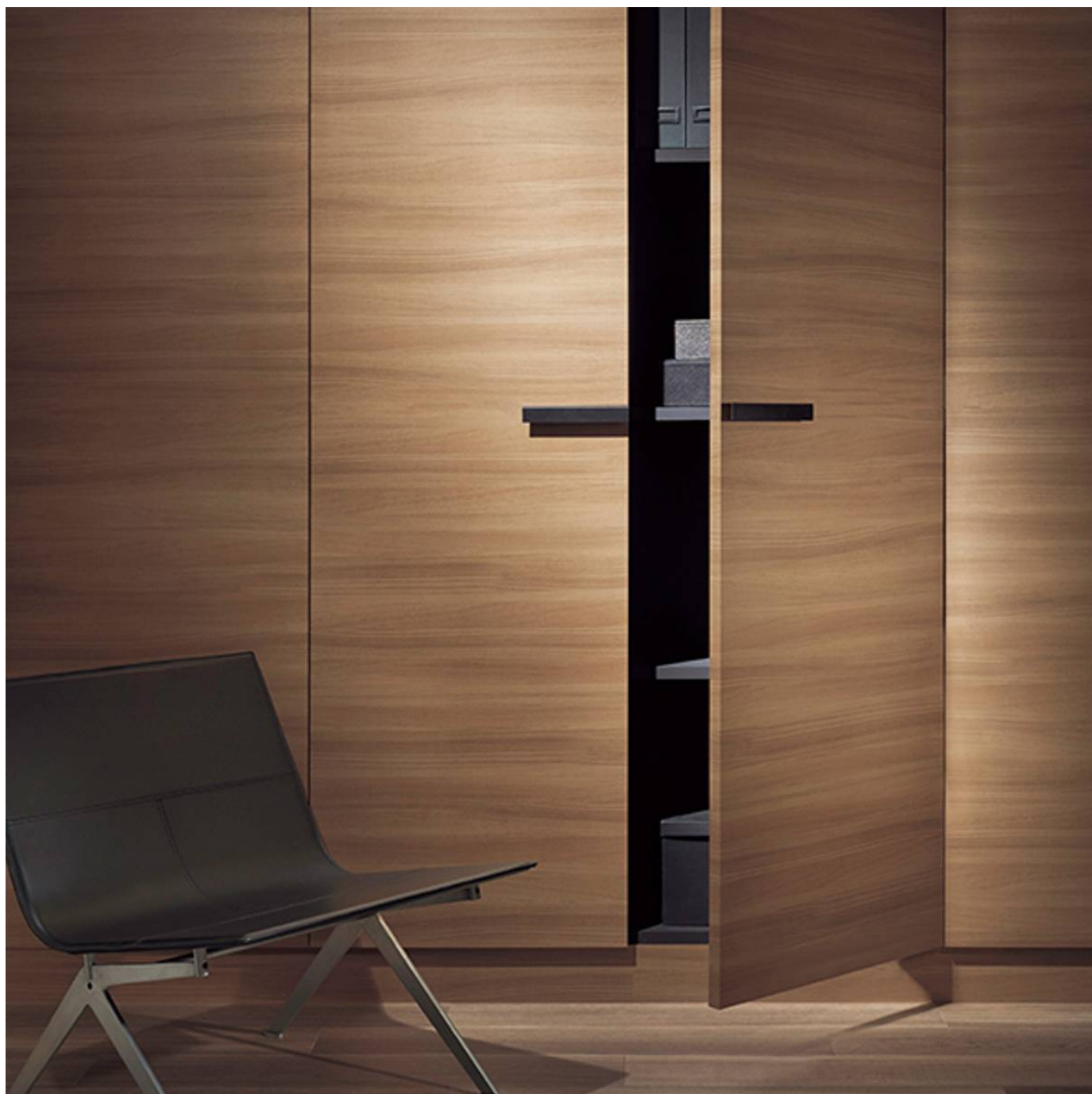


CLASSIC WOOD

Wallcoverings » Architectural Film



Brand: **Reatec**

Applications: **Walls, Joinery**

1300 306 399

info@baresque.com.au

baresque.com.au

1 of 11

CLASSIC WOOD

Wallcoverings » Architectural Film

Provide a fresh new look for your space with Reatec Class Wood Collection, with a variety of patterns and wood tones to suit your project requirements

✓ **Bleach Cleanable**

Description	Reatec is a durable and realistic architectural film with a pressure sensitive adhesive and air removal system backing. Utilising state of the art, multi layer printing and minute embossing, its appearance is almost indistinguishable from real wood or stone. Reatec is stain and solvent/chemical resistant, anti-bacterial, anti-mould, colorfast, washable, scrubbable, and abrasion resistant. A pdf with full Reatec Test Results can be found on the product Downloads tab on the website. Reatec can be stretched to cover the corners and curves and is suitable for both indoor and outdoor uses including kitchens and bathrooms. Go to the DOWNLOADS tab for our Reatec Additional Spec Sheet and Installation Guide.
Composition	Reatec is a durable and realistic architectural film with a pressure sensitive adhesive and air removal system backing 350 g/m ²
Pattern Repeat Size	N/A
Fire Rating	<p>Tested in accordance with AS ISO 9705 2003 for the purpose of determining the Group Number classification required by the Building Code of Australia for the control of fire spread on interior wall and ceiling linings.</p> <p>Classification - Group 1 Specific Extinction - Less than 250m²/kg</p>
Lead Time	<ul style="list-style-type: none">• 2-weeks (approx.) from Wednesday, subject to stock availability.• Additional 1-week for Western Australia.• Express delivery is available subject to a surcharge. Contact Baresque for details and pricing.
Suggested Installation	<p>Reatec is a specialised product and should only be installed by a trained installer.</p> <p>It is strongly recommended that the installation instructions from our product downloads are read and understood.</p> <p>As Reatec is a thin film, the substrate should be prepared as smooth as possible to avoid visible unevenness.</p> <p>Reatec can be installed and repaired on-site, resulting in almost no downtime for both interior and exterior applications.</p> <p>Feel free to contact Baresque with any installation questions.</p>

CLASSIC WOOD

Wallcoverings » Architectural Film

Care Instructions

Wipe material with a clean, soft cloth dampened with a mild solution of liquid detergent and warm water. Repeat using only clean water, then dry with a lint free cloth.

Avoid using wax polishes, solvents or concentrated abrasives.

For more difficult stains, dampen a soft white cloth with a solution of household bleach (10% bleach / 90% water). Rub gently. Rinse with a water dampened cloth to remove bleach concentration.

Always test in an inconspicuous area first. If care instructions don't deliver the expected results, cease cleaning method immediately and contact Baresque for assistance.

Warranty

2-year warranty. Visit baresque.com.au/warranty for complete details.

CLASSIC WOOD

Wallcoverings » Architectural Film

Colour & Finish Options

				
TC4151	TC4155	TC4156	TC4157	TC4158
				
TC4161	TC4164	TC4165	TC4166	TC4167
				
TC4169	TC4170	TC4171	TC4173	TC4174
				
TC4175	TC4177	TC4178	TC4181	TC4182
				
TC4188	TC4190	TC4193	TC4194	TC4196

CLASSIC WOOD

Wallcoverings » Architectural Film



TC4197



TC4198



TC4200



TC4204



TC4205



TC4208



TC4210



TC4211



TC4212



TC4215



TC4218



TC4221



TC4222



TC4223



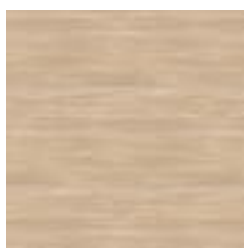
TC4224



TC4225



TC4231



TC4233



TC4235



TC4238



TC4240



TC4241



TC4242



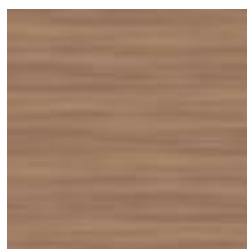
TC4244



TC4246

CLASSIC WOOD

Wallcoverings » Architectural Film



TC4247



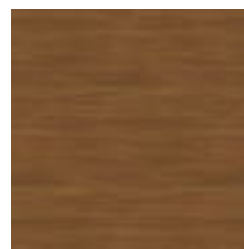
TC4249



TC4251



TC4254



TC4255



TC4256



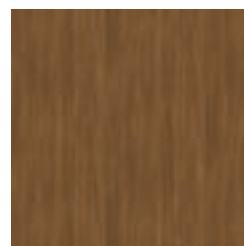
TC4257



TC4258



TC4260



TC4261



TC4262



TC4263



TC4265



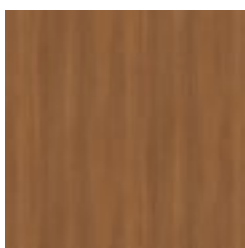
TC4269



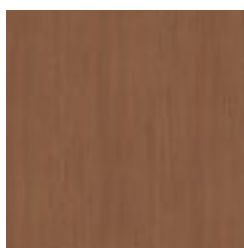
TC4270



TC4272



TC4273



TC4277



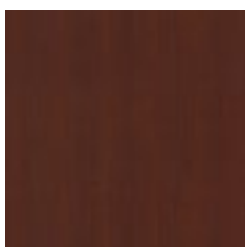
TC4278



TC4280



TC4282



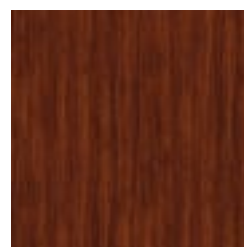
TC4284



TC4286



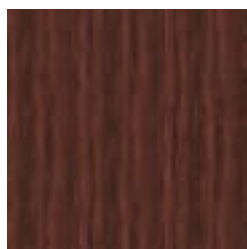
TC4288



TC4289

CLASSIC WOOD

Wallcoverings » Architectural Film



TC4296



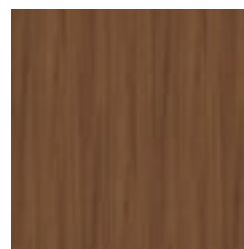
TC4299



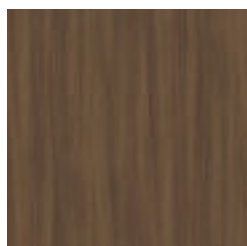
TC4301



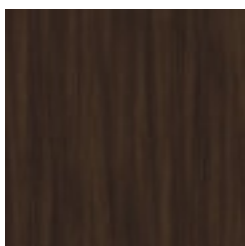
TC4303



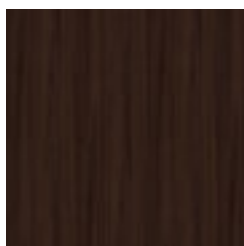
TC4304



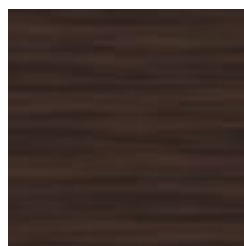
TC4305



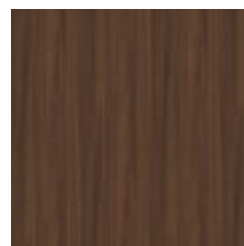
TC4307



TC4308



TC4309



TC4310



TC4311



TC4313



TC4315



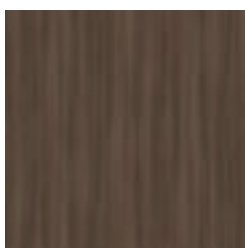
TC4316



TC4317



TC4321



TC4322



TC4323



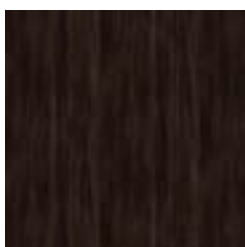
TC4324



TC4327



TC4328



TC4330



TC4331



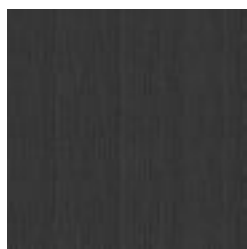
TC4332



TC4335

CLASSIC WOOD

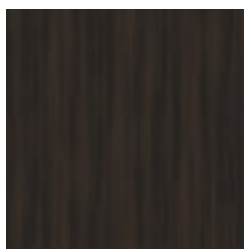
Wallcoverings » Architectural Film



TC4336



TC4337



TC4338



TC4339



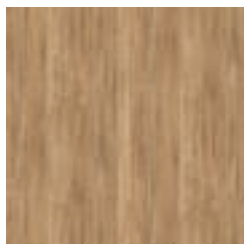
TC4344



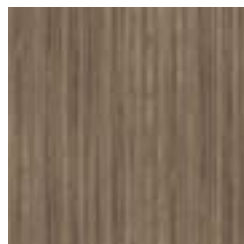
TC4346



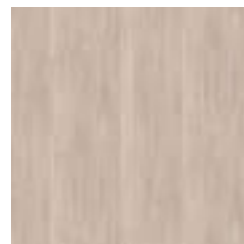
TC4348



TC4349



TC4353



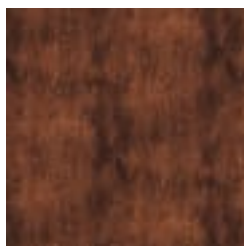
TC4354



TC4355



TC4356



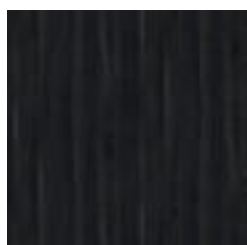
TC4357



TC4359



TC4360



TC4362



TC5053



TC5054



TC5055



TC5057



TC5058



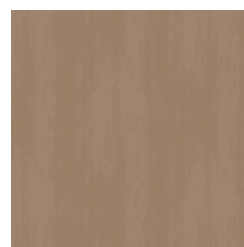
TC5061



TC5062



TC5063



TC5064

CLASSIC WOOD

Wallcoverings » Architectural Film



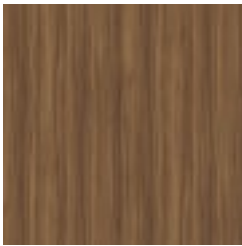
TC5065



TC5066



TC5067



TC5068



TC5069



TC5070



TC5071



TC5072



TC5073



TC5078



TC5079



TC5080



TC5081



TC5082



TC5086



TC5087



TC5088



TC5089



TC5090



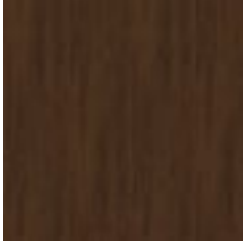
TC5091



TC5092



TC5093



TC5094



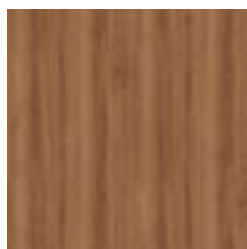
TC5095



TC5098

CLASSIC WOOD

Wallcoverings » Architectural Film



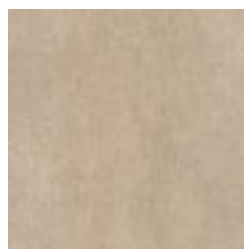
TC5099



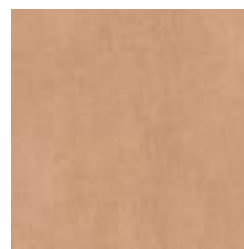
TC5100



TC5101



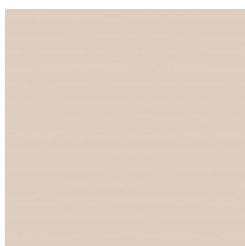
TC5102



TC5103



TC5104



TC5106



TC5108



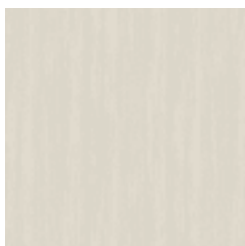
TC5109



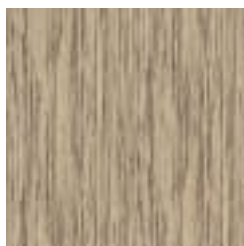
TC5110



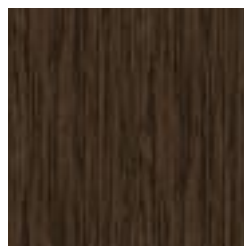
TC5111



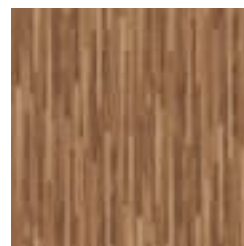
TC5112



TC5113



TC5114



TC5117



TC5118



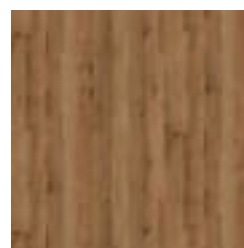
TC5119



TC5120



TC5121



TC5122



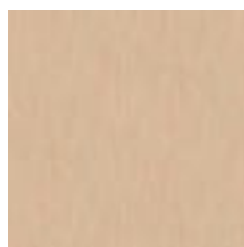
TC5123



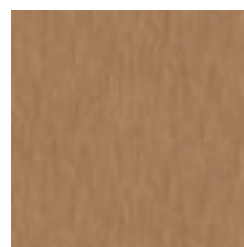
TC5124



TC5431



TC5432



TC5433

CLASSIC WOOD

Wallcoverings » Architectural Film



TC5434



TC5435



TC5436



TC5437



TC5438



TC5439



TC5440



TC5441



TC5442



TC5443



TC5444



TC5445



TC5446



TC5447



TC5448