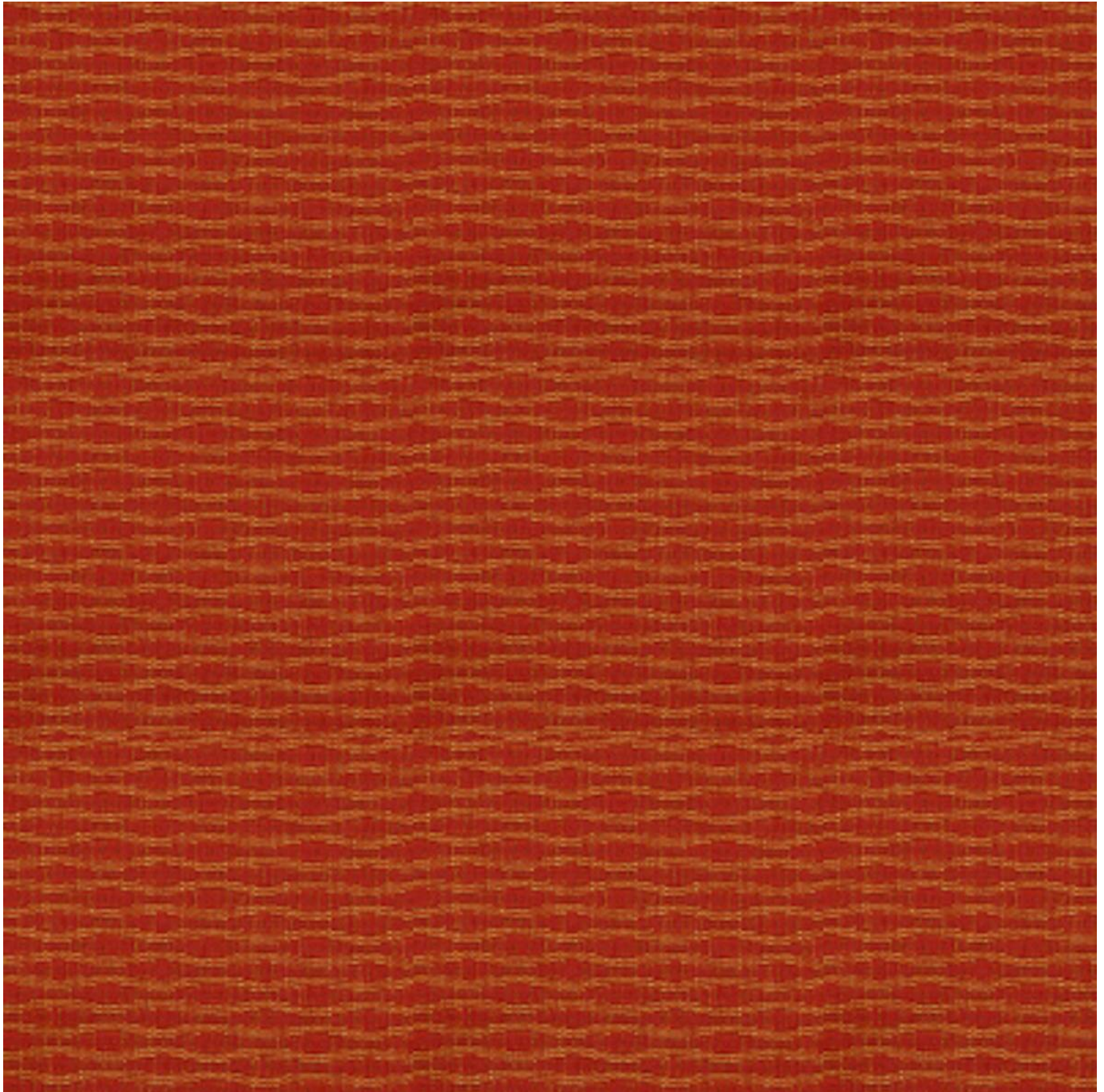


# WICKER EMBRACE

Fabrics » Woven Fabrics

---



Brand: **Crypton**

Applications: **Upholstery**

1300 306 399

[info@baresque.com.au](mailto:info@baresque.com.au)

[baresque.com.au](http://baresque.com.au)

1 of 4

# WICKER EMBRACE

Fabrics » Woven Fabrics

Wicker is a 137cm wide woven upholstery with a textured solid that looks like a small oscillating line. available in 10 colourways.

✓ **Bleach Cleanable**

✓ **Moisture Barrier**

---

Description	CRYPTON is a permanent moisture, soil resistance and anti-microbial protection backing.
Composition	CRYPTON - 67% polyester, 16% post consumer recycled polyester, 17% recycled post industrial polyester
Pattern Repeat Size	RAILROADED - 1.9cm V / 1.0cm H
Roll Size	137cm x Approx 45m - 55m - Available by the lineal metre
Abrasion	54,000+ Double Rubs (Wyzenbeek)
Fire Rating	This product can be treated with a fire retardant that will ensure it meets Australian Standard 1530.3. Contact Baresque for details.
Lead Time	<ul style="list-style-type: none"><li>• 2-weeks (approx.) from Wednesday, subject to stock availability.</li><li>• Additional 1-week for Western Australia.</li><li>• Express delivery is available subject to a surcharge. Contact Baresque for details and pricing.</li></ul>

---

# WICKER EMBRACE

Fabrics » Woven Fabrics

---

## Care Instructions

Always use a clean, white, soft cloth.

Prepare a mixture of 1/3 Napisan and 2/3 Fab. Combine the mixture with water to make a paste about the consistency of soft margarine i.e. not too runny. Apply using a soft bristle brush. Leave for 10 minutes.

Use a brush and clean, warm water to remove the paste being sure to renew the water so that it remains clean.

Never use stiff bristles or wire brushes, as they may damage the fabric. To prevent soil build-up, frequent vacuuming is recommended.

Using a cloth to pat dry will help eliminate watermarks.

For more difficult stains, dampen a soft white cloth with a solution of household bleach (10% bleach / 90% water). Rub gently. Rinse with a water dampened cloth to remove bleach concentration.

Always test in an inconspicuous area first. If care instructions don't deliver the expected results, cease cleaning method immediately and contact Baresque for assistance.

---

## Warranty

2-year warranty. Visit [baresque.com.au/warranty](https://www.baresque.com.au/warranty) for complete details.

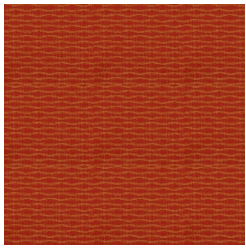
---

# WICKER EMBRACE

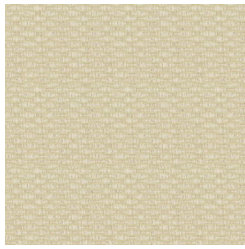
Fabrics » Woven Fabrics

---

## Colour & Finish Options



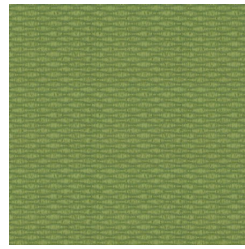
44 PUMPKIN



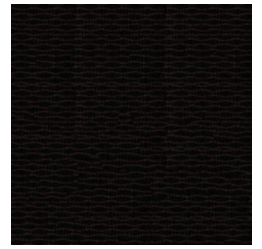
61 VANILLA



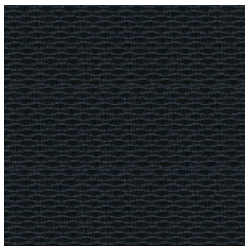
87 CHESTNUT



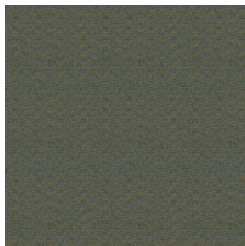
205 SPRIG



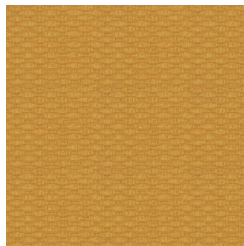
17 AUBURN



305 EMPIRE



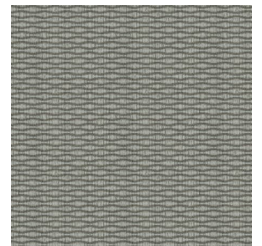
37 LAGOON



502 CORNSILK



6009 CHINCHILLA



91 LIGHT GREY