

BOX BAFFLES FREEFORM

Acoustics » Acoustic Baffles



Brand: **Zintra**

Collections: **Box Baffles**

Applications: **Walls**

1300 306 399

info@baresque.com.au

baresque.com.au

1 of 11

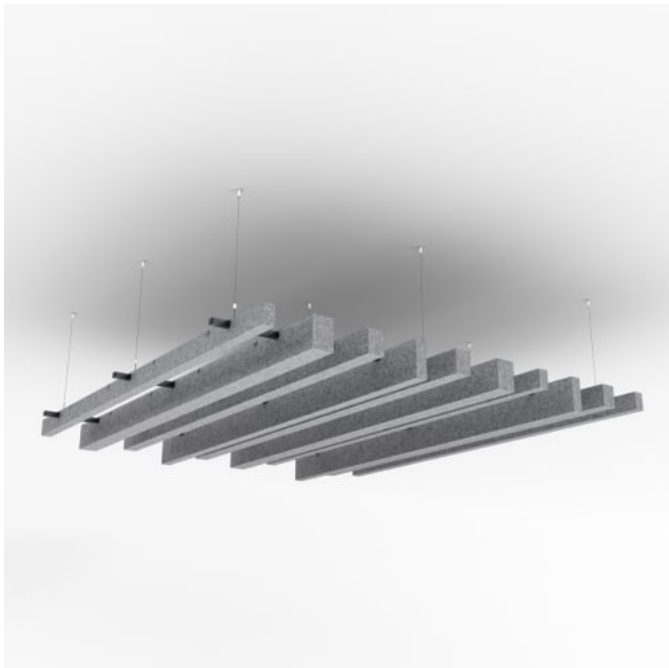
BOX BAFFLES FREEFORM

Acoustics » Acoustic Baffles



BOX BAFFLES FREEFORM

Acoustics » Acoustic Baffles



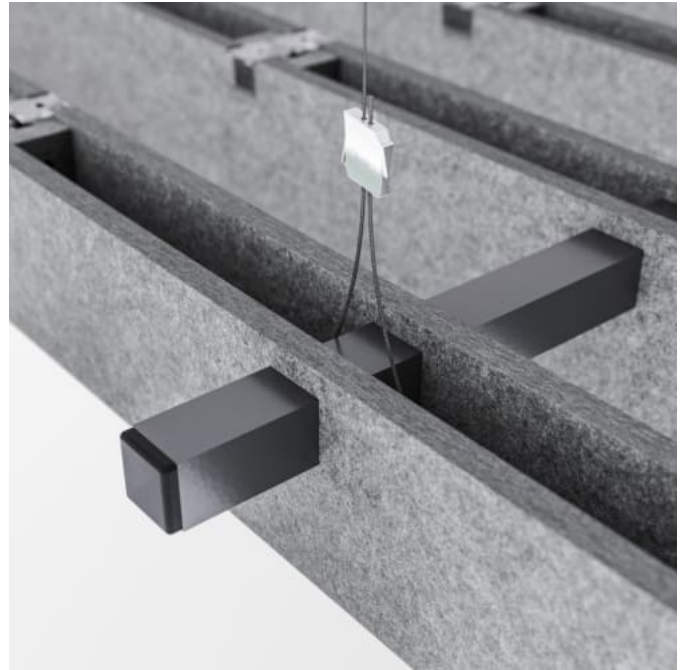
BOX BAFFLES FREEFORM

Acoustics » Acoustic Baffles



BOX BAFFLES FREEFORM

Acoustics » Acoustic Baffles



BOX BAFFLES FREEFORM

Acoustics » Acoustic Baffles

Freeform blends Uniform Slim, Uniform Span and Uniform Wide into a 12-baffle system up to 6.7" (170mm) deep. Delivers subtle variation, texture, and high acoustic performance.

Description

Zintra Box Baffles Systems are prefabricated, ceiling-mounted systems that bring rhythm, dimension, and high-performance acoustics to any space. Suspended in perfectly spaced rows, the box-shaped design not only looks substantial but also improves sound absorption, capturing noise within and increasing the NRC rating. Lightweight, modular, and scalable, these systems are easy to assemble, easy to install, and a visually striking alternative to traditional mineral fibre ceilings.

Uniform Slim Box Baffle Systems

Blending Uniform Slim, Uniform Wide, and Uniform Span into a system of 12 baffles, reaching depths of up to 6.7" (170mm). The variation in profiles introduces texture and depth, delivering a versatile design that feels cohesive yet visually engaging.

Available in two sizes, 39" (1000mm) w x 94.5" (2400mm) d and 93" (2362mm) w x 94.5" (2400mm) d, Slim is ideal for projects that call for subtle impact with strong acoustic performance.

Design Options

Choose from uniform or mixed Box Baffle Systems to suit your design vision. Uniform Slim, Wide, Span, and Grand offer clean, linear profiles, while Freeform layers Slim, Wide, and Span for subtle variation. Fusion combines all four sizes for bold, architectural statements.

With a wide array of designs, Zintra Box Baffles are ideal for large, noisy spaces such as educational institutions, shopping centres, restaurants, and airports, where performance meets aesthetic appeal.

Dimensions

1000 mm (39") w x 2400mm (94.5") d x 170mm (6.7") h
2362mm (93") w x 2400mm (94.5") d x 170mm (6.7") h

Fire Rating

Tested in accordance with AS ISO 9705 2003 for the purpose of determining the Group Number classification required by the Building Code of Australia for the control of fire spread on interior wall and ceiling linings.

Classification - Group 1

Specific Extinction - Less than 250m²/kg

Supplied As

12 Baffles
48 | 120 x 1" (25mm) Clear Beams Clips
2 | 3 x 1" (25mm) Cross Runner (Standard Black)
4 | 6 End Caps
3 x 5' ASK's (per cross runner)

BOX BAFFLES FREEFORM

Acoustics » Acoustic Baffles

Suggested Installation

Be sure to support the panel during installation to avoid bowing or creasing.

Fix wire to floor and ceiling leaving a gap between to fit screen.

Adjust pivoting support to desire height, fit screen.

Download the Handling and Installation guide for full instructions.

Care Instructions

Vacuum to remove dust.

Dab Zintra with a damp clean cloth and mild solution of liquid detergent and warm water. Repeat using only clean water, then pat dry with a lint free cloth.

For difficult stains, use a solution of household bleach (10% bleach / 90% water). To remove the bleach, repeat using a clean, water dampened cloth, then pat dry.

Always test in an inconspicuous area first and if you don't see the expected results, contact us.

Warranty

5-year warranty.

Customisable

The Zintra Acoustic Solutions range is customisable to your project. Please get in touch with your local contact for details.

Additional Comments

Without Air Gap: Up to 0.90 | With 610mm (24") Air Gap: Up to 0.95

How to Specify

1. Space Size
2. Layout Of Baffles Within Space
3. Baffle Depth
4. Installation | System or Set | 5. Hardware
6. Select Connection Method
7. Select Colour

BOX BAFFLES FREEFORM

Acoustics » Acoustic Baffles

Colour & Finish Options

Zintra 12mm Solid PET



Bark



Brick



Cadet



Chambray



Cobalt



Ecru



Elderberry



Fossil



Frost



Grass



Greige



Ivory



Linen



Malachite



Mandarin



Meadow



Midnight



Ochre



Olive



Parchment



Pebble



Pewter



Saffron



Sky



Smoke

BOX BAFFLES FREEFORM

Acoustics » Acoustic Baffles



Slate



Storm



Sunshine



Tar



Twilight

Zintra 24mm Solid PET



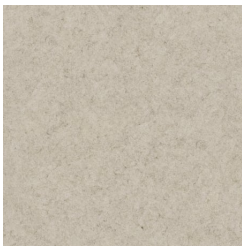
Ecru



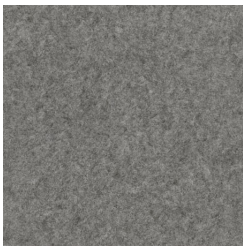
Frost



Grass



Pebble

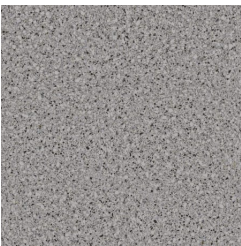


Pewter

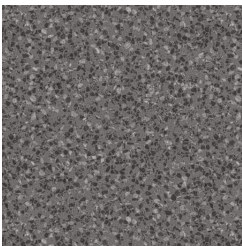


Slate

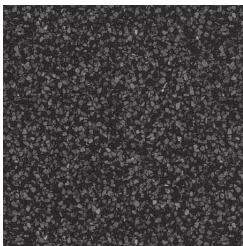
Zintra Premium Material



Terrazzo Light



Terrazzo Medium



Terrazzo Dark



Travertine Light



Travertine Medium



Travertine Dark



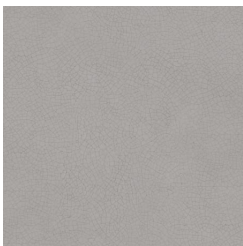
Shale Light



Shale Medium



Shale Dark



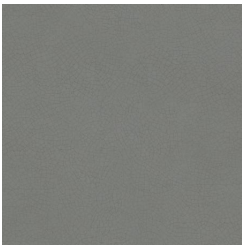
Raku Bone

BOX BAFFLES FREEFORM

Acoustics » Acoustic Baffles



Raku Luster



Raku Jade



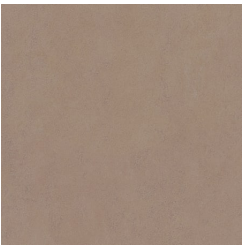
Concrete Cast



Concrete Polished



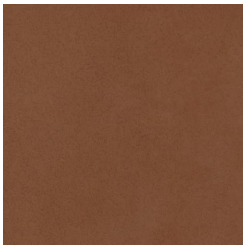
Concrete Dark Tint



Terracotta Sun
Bleached



Terracotta Mission



Terracotta Antique

Zintra Premium Wood



Knotty Pine



Maple



Poplar



Australian Walnut



Claro Walnut



Palm Wood



Rustic Walnut



Cherry



Euro Beech



Lacewood



Redwood

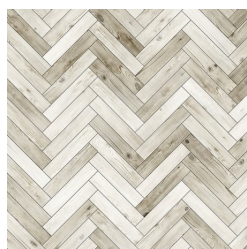


White Oak

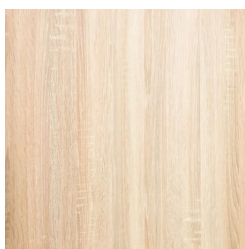
Zintra Print Art Timber

BOX BAFFLES FREEFORM

Acoustics » Acoustic Baffles



Blonde Chevron



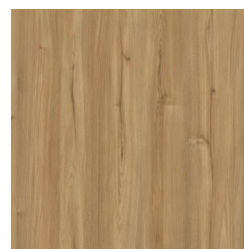
Light Oak



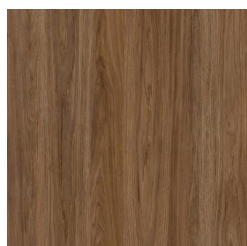
Log Cabin



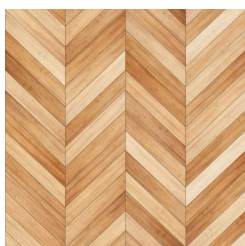
Rough Sawn Timber



Urban Oak



Walnut

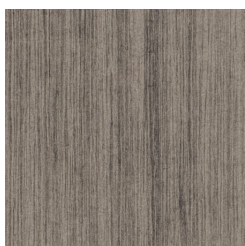


Wooded Herringbone

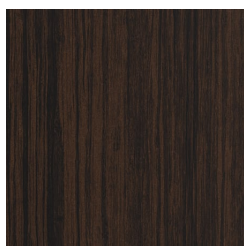
Zintra Timber Print



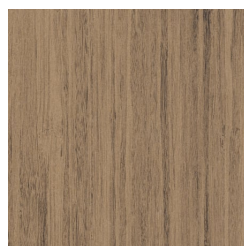
Eucalyptus



Ironbark



Merbau



Spotted Gum